

LOC I-JDU 111.15	APP CRS 319°	Rwy ldg 10000 TDZE 442 Apt Elev 459
----------------------------	------------------------	--

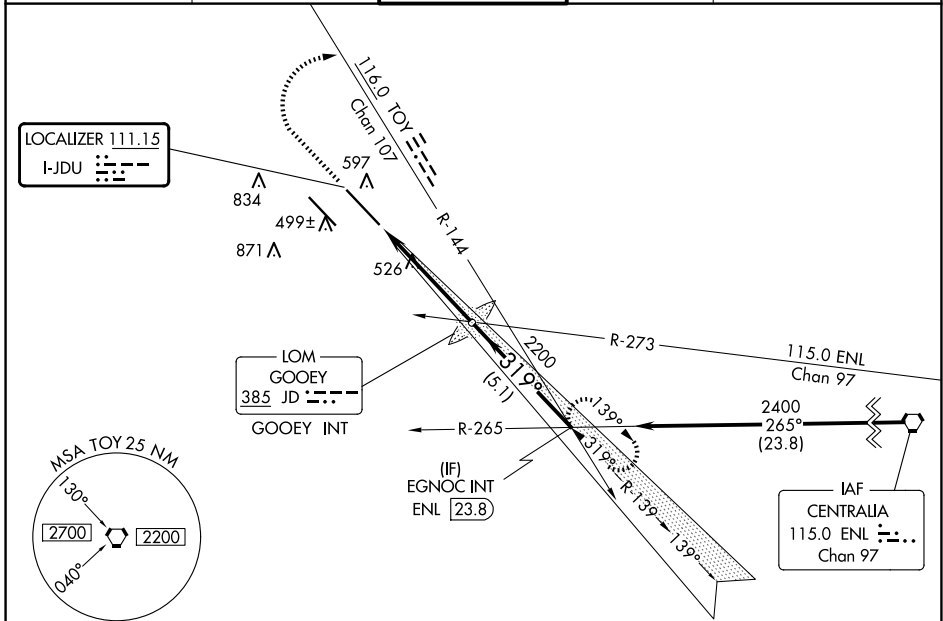
ILS or LOC RWY 32R

SCOTT AFB/MIDAMERICA ST LOUIS (BLV)

ASR For inop ALS, increase S-ILS 32R Cat E visibility to RVR 4000 and increase S-LOC visibility to RVR 5000.
* RVR 1800 authorized with use of FD or AP or HUD to DA.

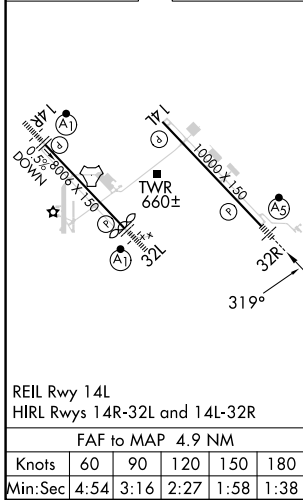
MALS MISSED APPROACH: Climb to 1500 then climbing right turn to 2400 on heading 194° and TOY VORTAC R-144 to EGNOC INT and hold.

ATIS ★ 128.7 256.7	ST LOUIS APP CON 125.2 281.5	SCOTT TOWER 128.25 253.5	GND CON 119.2 275.8	CLNC DEL 119.875 263.025
------------------------------	--	------------------------------------	-------------------------------	------------------------------------



ELEV 459	D	TDZE 442
-----------------	----------	-----------------

A 1155 Procedure NA for arrivals on ENL VORTAC airway radials 225 CW 294.



1500	2400	TOY R-144	EGNOC INT	VGSI and ILS glidepath not coincident (VGSI Angle 3.00/TCH 71).						
				GOOEY LOM/INT	EGNOC INT					
				2043	319°		2400			
				2200	GS 3.00° TCH 55					
				4.9 NM	5.1 NM					
CATEGORY	A	B	C	D	E					
S-ILS 32R *	642/24					200 (200-½)				
S-LOC 32R	780/24		338 (400-½)			780/26		338 (400-½)		
CIRCLING	1000-1		1120-1			1240-2¼		1240-2½		1240-2¾
	541 (600-1)		661 (700-1)			781 (800-2¼)		781 (800-2½)		781 (800-2¾)

EC-3, 15 MAY 2025 to 12 JUN 2025

EC-3, 15 MAY 2025 to 12 JUN 2025