



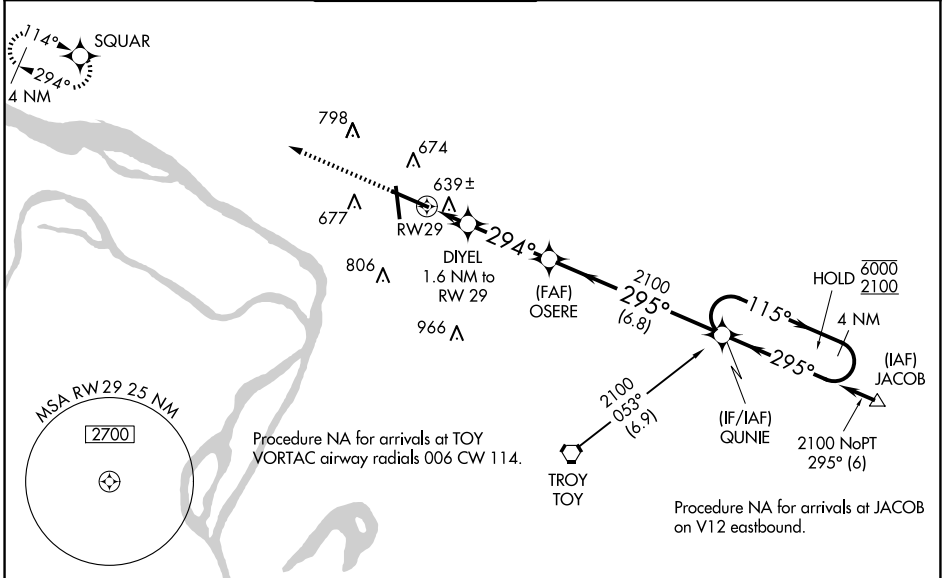
WAAS CH 77507 W29A	APP CRS 294°	Rwy Idg TDZE Apt Elev	8099 531 544
--	------------------------	-----------------------------	---

RNAV (GPS) RWY 29

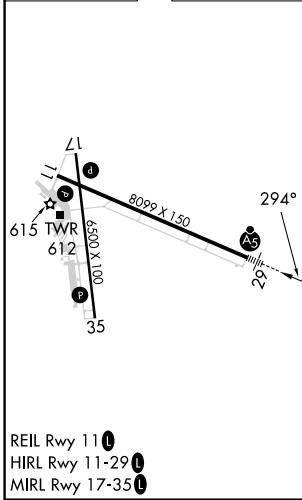
ST LOUIS RGNL (ALN)

RNP APCH.		MISSED APPROACH: Climb to 2400 direct SQUAR and hold.
 For uncompensated Baro-VNAV systems, LNAV/VNAV NA below -16°C or above 54°C. For inop ALS, increase LNAV/VNAV all Cats visibility to 3/8 SM and LNAV Cat C/D visibility to 1 SM.		

ATIS 128.0	ST LOUIS APP CON 124.2 353.9	REGIONAL TOWER* 126.0 (CTAF) 0 239.0	GND CON 120.2	CLNC DEL 120.2 (when tower closed)	UNICOM 122.95
----------------------	--	--	-------------------------	---	-------------------------



ELEV 544	D	TDZE 531
----------	----------	----------



	▲1068					
	2400	SQUAR	DIYEL	OSERE	QUNIE	4 NM
			1.6 NM to RW29	2100		Holding Pattern
	*LNAV only.					
		*1 NM to RW29		2100	←295°	6000
					←295°	2100
						GP 3.00°
						TCH 55
CATEGORY	A	B	C	D		
LPV DA		731-1/2	200 (200-1/2)			
LNAV/VNAV DA		825-1/2	294 (300-1/2)			
LNAV MDA	900-1/2	369 (400-1/2)	900-3/4	369 (400-3/4)		
CIRCLING	1000-1	456 (500-1)	1160-1 3/4	616 (700-1 3/4)	1200-2	656 (700-2)

EC-3, 15 MAY 2025 to 12 JUN 2025

EC-3, 15 MAY 2025 to 12 JUN 2025