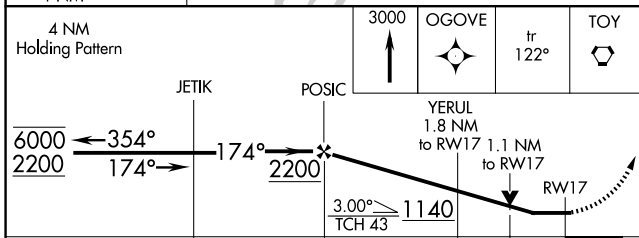
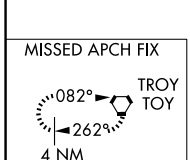
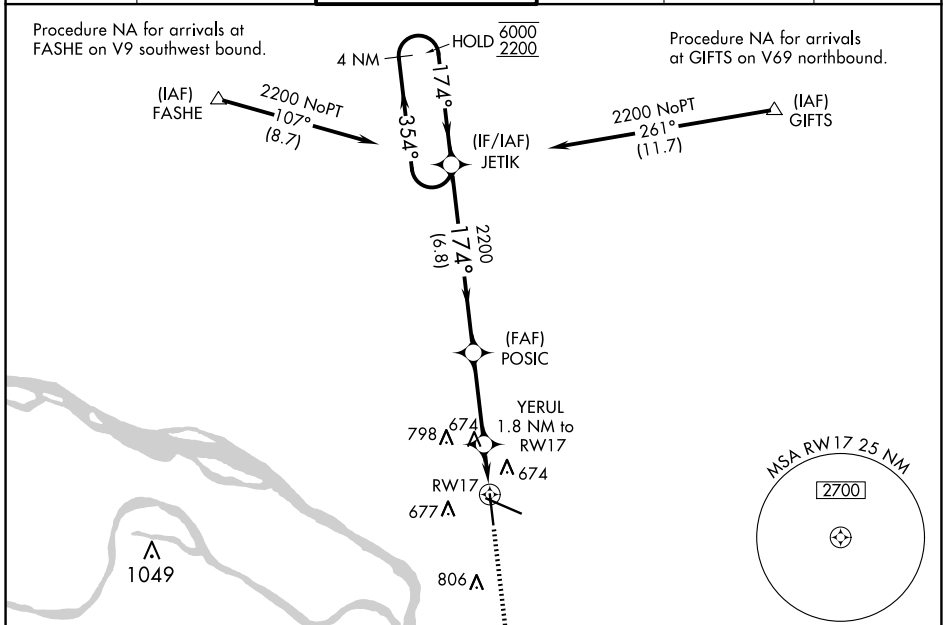


APP CRS 174°	Rwy Idg 6500
	TDZE 543
	Apt Elev 544

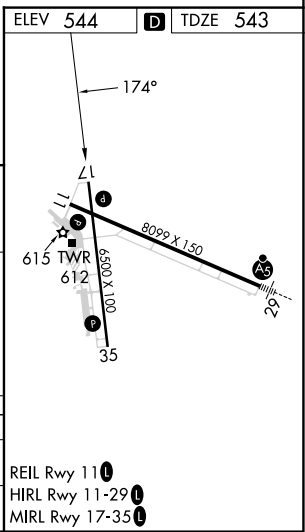
RNAV (GPS) RWY 17

ST LOUIS RGNL (ALN)

RNP APCH.		MISSED APPROACH: Climb to 3000 direct OGOVE and on track 122° to TOY VORTAC and hold.	
Rwy 17 helicopter visibility reduction below 3/4 SM NA.			
ATIS 128.0	ST LOUIS APP CON 124.2 353.9	REGIONAL TOWER* 126.0 (CTAF) 0 239.0	GND CON 120.2
		CLNC DEL 120.2 (when tower closed)	UNICOM 122.95



CATEGORY	A	B	C	D
LNNAV MDA	940-1	397 (400-1)	940-1 1/8	397 (400-1 1/8)
CIRCLING	1000-1	456 (500-1)	1160-1 3/4	1200-2
			616 (700-1 3/4)	656 (700-2)



EC-3, 15 MAY 2025 to 12 JUN 2025

EC-3, 15 MAY 2025 to 12 JUN 2025