

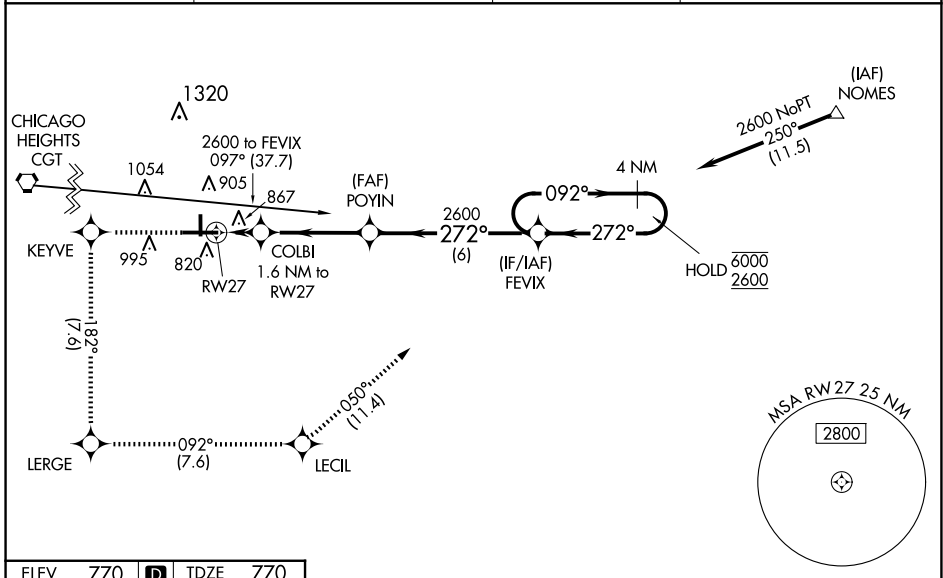
WAAS CH <b>86806</b> <b>W27A</b>	APP CRS <b>272°</b>	Rwy Idg TDZE <b>770</b> Apt Elev <b>770</b>	<b>6500</b> <b>770</b> <b>770</b>
--	------------------------	---	---

# RNAV (GPS) RWY 27

PORTER COUNTY RGNL (VPZ)

RNP APCH - GPS.	MALSR	MISSED APPROACH: Climb to 2600 direct KEYVE and on track 182° to LERGE and on track 092° to LECIL and on track 050° to FEVIX and hold.
<p>⚠ For uncompensated Baro-VNAV systems, LNAV/VNAV NA below -16°C or above 54°C. For inop ALS, increase LNAV Cats C and D visibility to 1 1/8 SM.</p>		

ASOS <b>125.875</b>	SOUTH BEND APP CON * <b>132.05 257.8</b>	CLNC DEL <b>120.525</b>	UNICOM <b>122.725 (CTAF)</b>
------------------------	---	----------------------------	---------------------------------



ELEV 770	<b>D</b>	TDZE 770
----------	----------	----------

	2600	KEYVE	↑	182°	LERGERE	↑	092°	LECIL	↑	050°	FEVIX	4 NM Holding Pattern
	CATEGORY	A		B		C		D				
	LPV DA	DA		1020-1/2		250 (300-1/2)						
	LNAV/VNAV DA	DA		1201-3/4		431 (500-3/4)						
LNAV MDA	1180-1/2		410 (500-1/2)		1180-3/4		410 (500-3/4)					
CIRCLING	1260-1 490 (500-1)		1300-1 530 (600-1)		1360-1 1/2 590 (600-1 1/2)		1620-2 3/4 850 (900-2 3/4)					

HIRL Rwy 9-27

MIRL Rwy 18-36

REIL Rwy 9, 18 and 36

EC-2, 15 MAY 2025 to 12 JUN 2025

EC-2, 15 MAY 2025 to 12 JUN 2025