

WAAS CH <b>65738</b> <b>W23A</b>	APP CRS <b>236°</b>	Rwy Idg TDZE <b>834</b> Apt Elev <b>836</b>	<b>3035</b>
--	------------------------	---	-------------

# RNAV (GPS) RWY 23

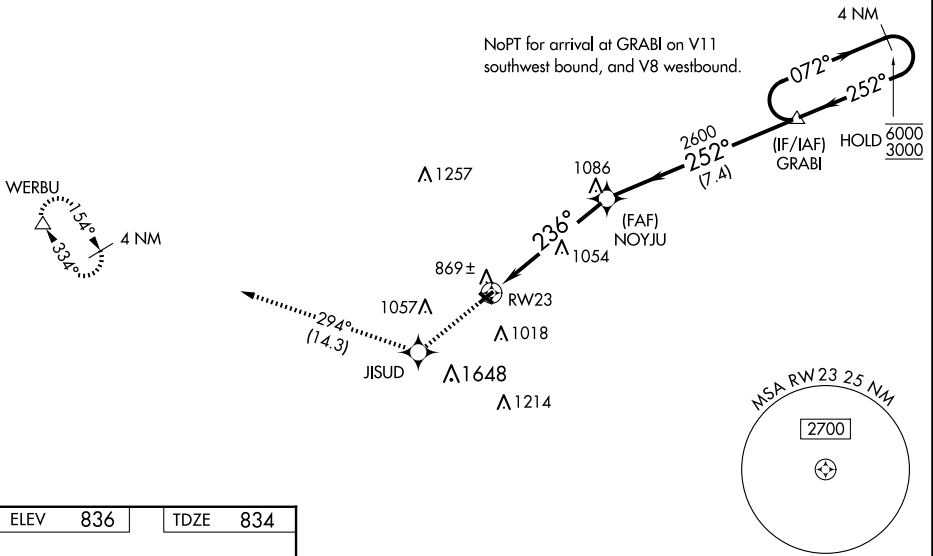
SMITH FLD (SMD)

RNP APCH - GPS.

**▽** Rwy 23 helicopter visibility reduction below 1 SM NA. Circling to Rwy 13/31 NA at night. When local altimeter setting not received, use FWA altimeter setting and increase all MDAs 40 feet and LNAV visibility Cat C 1/8 SM and LP visibility Cat C 1/8 SM.

MISSED APPROACH: Climb to 2700 direct JISUD and on track 294° to WERBU and hold.

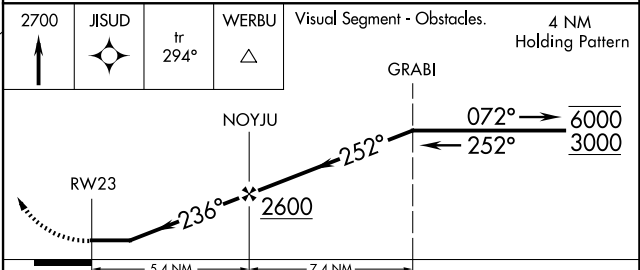
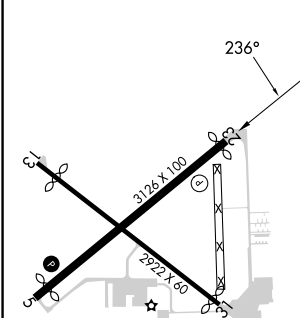
AWOS-3 <b>124.55</b>	FORT WAYNE APP CON <b>127.2 284.6</b>	UNICOM <b>122.8 (CTAF)</b>
-------------------------	--	-------------------------------



EC-2, 15 MAY 2025 to 12 JUN 2025

EC-2, 15 MAY 2025 to 12 JUN 2025

ELEV 836	TDZE 834
----------	----------



CATEGORY	A	B	C	D
LP MDA	1360-1	526 (600-1)	1360-1½ 526 (600-1½)	NA
LNAV MDA	1400-1	566 (600-1)	1400-1½ 566 (600-1½)	NA
<b>C</b> CIRCLING	1400-1	564 (600-1)	1940-3 1104 (1200-3)	NA