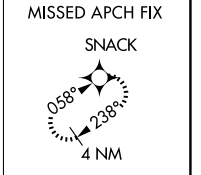
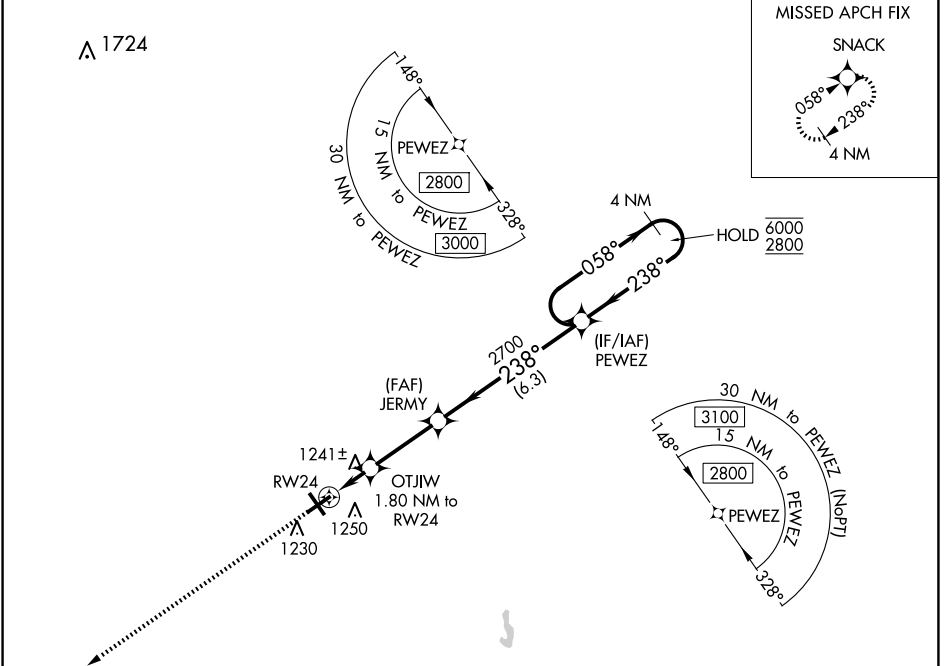


WAAS CH <b>82112</b> <b>W24A</b>	APP CRS <b>238°</b>	Rwy Idg <b>5500</b> TDZE <b>1139</b> Apt Elev <b>1140</b>
--	------------------------	---

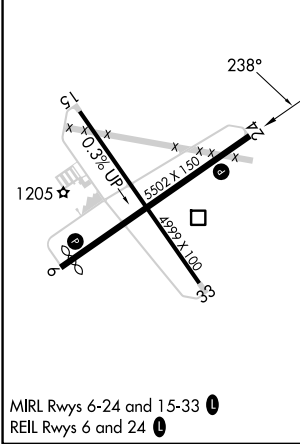
# RNAV (GPS) RWY 24

RICHMOND MUNI (RID)

RNP APCH.			MISSED APPROACH: Climb to 2800 direct SNACK and hold.
⚠ NA Circling Rwy 15 NA at night. For uncompensated Baro-VNAV systems, LNAV/VNAV NA below -17°C or above 54°C.			
AWOS-3 <b>121.225</b>	COLUMBUS APP CON <b>134.45 352.05</b>	CLNC DEL <b>133.55</b>	UNICOM <b>122.7 (CTAF) 0</b>



ELEV 1140	<b>D</b>	TDZE 1139
-----------	----------	-----------



2800 SNACK	OTJIW 1.8 NM to RWY24	JERMY 2700	PEWEZ 4 NM Holding Pattern	
*LNAV only.	*1 NM to RWY24	*1740	058° → 6000 ← 238° 2800	
	1 NM -0.8	3 NM	6.3 NM	
GP 3.00° TCH 48				
CATEGORY	A	B	C	D
LPV DA		1339-3/4	200 (200-3/4)	
LNAV/VNAV DA		1409-7/8	270 (300-7/8)	
LNAV MDA		1500-1	361 (400-1)	
<b>C</b> CIRCLING	1600-1	460 (500-1)	1600-1 1/2 460 (500-1 1/2)	1700-2 560 (600-2)

EC-2, 15 MAY 2025 to 12 JUN 2025

EC-2, 15 MAY 2025 to 12 JUN 2025