

| | | | |
|--|------------------------|-----------------------------|---|
| WAAS CH 45829 W05A | APP CRS 053° | Rwy Idg TDZE Apt Elev | 6100 645 651 |
|--|------------------------|-----------------------------|---|

RNAV (GPS) RWY 5

MIDDLETOWN RGNL/HOOK FLD (MWO)

RNP APCH.

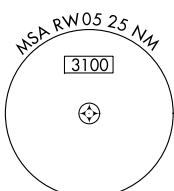
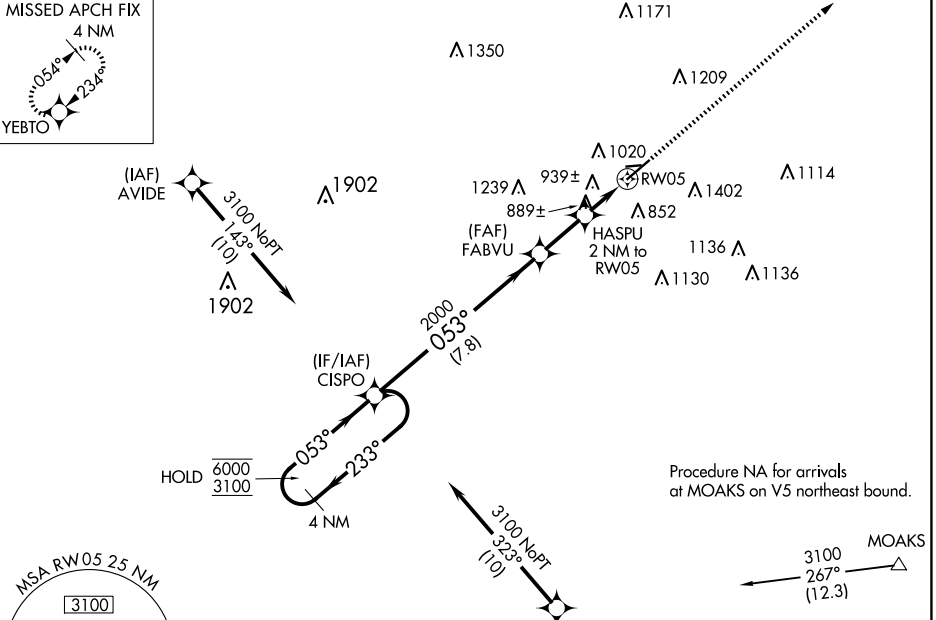
⚠ Circling NA to Rws 8 and 26. Rwy 5 Helicopter visibility reduction below 1 SM NA. Straight-in Rwy 5 NA at night, Circling Rwy 5 NA at night.

MISSED APPROACH: Climb to 3100 direct YEBTO and hold.

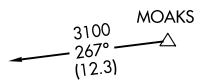
AWOS-3PT
120.025

COLUMBUS APP CON
118.85 269.275

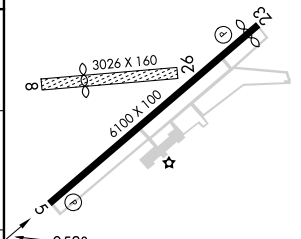
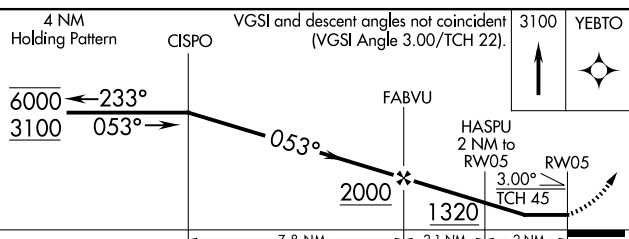
UNICOM
123.0 (CTAF) 0



Procedure NA for arrivals at MOAKS on V5 northeast bound.



| | |
|----------|----------|
| ELEV 651 | TDZE 645 |
|----------|----------|



| CATEGORY | A | B | C | D |
|----------|--------|-------------|------------------------------------|--|
| LP MDA | 1140-1 | 495 (500-1) | 1140-1 ³ / ₈ | 495 (500-1 ³ / ₈) |
| LNVA MDA | 1200-1 | 555 (600-1) | 1200-1 ⁵ / ₈ | 555 (600-1 ⁵ / ₈) |
| CIRCLING | 1380-1 | 729 (800-1) | 1720-3 1069 (1100-3) | 1840-3 1189 (1200-3) |

MIRL Rwy 5-23 0
REIL Rws 5 and 23 0

EC-2, 15 MAY 2025 to 12 JUN 2025

EC-2, 15 MAY 2025 to 12 JUN 2025