

|  |                        |                             |   |
|--|------------------------|-----------------------------|---|
| WAAS<br>CH <b>72601</b><br><b>W32A</b> | APP CRS<br><b>319°</b> | Rwy Idg<br>TDZE<br>Apt Elev | <b>6500</b><br><b>937</b><br><b>937</b> |
|--|------------------------|-----------------------------|---|

# RNAV (GPS) RWY 32

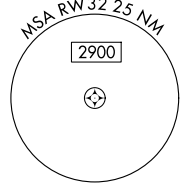
DELAWARE COUNTY RGNL (MIE)

**⚠** For uncompensated Baro-VNAV systems, LNAV/VNAV NA below -16°C (4°F) or above 47°C (116°F). DME/DME RNP-0.3 NA. Baro-VNAV and VDP NA when using Fort Wayne Intl altimeter setting. For inop MALSRS when using Fort Wayne Intl altimeter setting, increase LPV all Cats visibility to 1½ mile. When local altimeter setting not received, use Fort Wayne Intl altimeter setting and increase DA 121 feet; increase LPV and LNAV/VNAV all Cats visibility by ½ mile; increase all MDA 140 feet and LNAV visibility Cats C and D to 1¼; increase Circling visibility Cats C and D by ¼ mile. For inop MALSRS, increase all LPV Cats visibility to 1 SM.

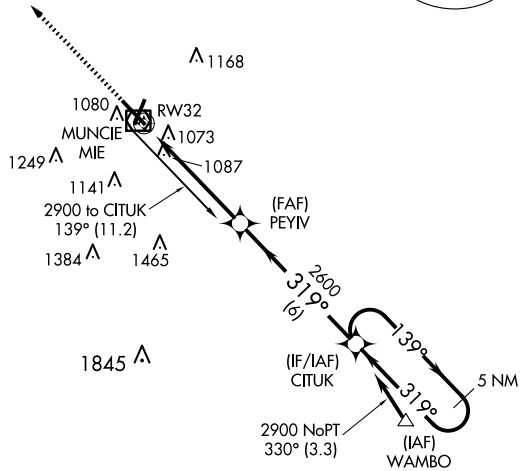
MALSRS

**MISSED APPROACH:**  
Climb to 2800 direct JOGBA and hold.

|                       |   |   |                         |                         |
|-----------------------|---|---|-------------------------|-------------------------|
| ATIS<br><b>133.25</b> | INDIANAPOLIS APP CON<br><b>120.65 317.8</b> | MUNCIE TOWER ★<br><b>120.1 (CTAF) 0</b> | GND CON<br><b>121.9</b> | UNICOM<br><b>122.95</b> |
|-----------------------|---|---|-------------------------|-------------------------|



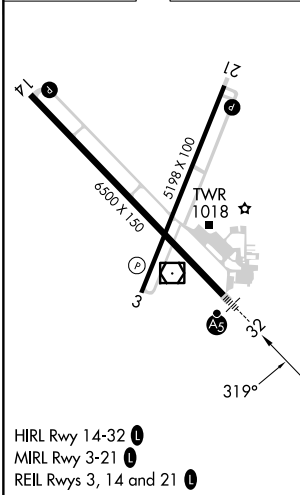
Procedure NA for arrivals on MIE VOR/DME airway radials 090 CW 109.



EC-2, 15 MAY 2025 to 12 JUN 2025

EC-2, 15 MAY 2025 to 12 JUN 2025

|          |          |          |
|----------|----------|----------|
| ELEV 937 | <b>D</b> | TDZE 937 |
|----------|----------|----------|



HIRL Rwy 14-32 **Ⓛ**  
MIRL Rwy 3-21 **Ⓛ**  
REIL Rwy 3, 14 and 21 **Ⓛ**

|                   |                      |            |   |                      |
|-------------------|----------------------|------------|---|----------------------|
| 2800              | JOGBA                | CITUK      |   | 5 NM Holding Pattern |
| *LNAV only.       | *1.2 NM to RW32      | PEYIV 2600 | 319°                                    | 2900                 |
|                   |                      | 2600       | 139°                                    | GP 3.04° TCH 52      |
|                   |                      | 1.2        | 3.8 NM                                  | 6 NM                 |
| CATEGORY          | A                    | B          | C                                       | D                    |
| LPV DA            | 1241-½ 304 (400-½)   |            |   |                      |
| LNAV/VNAV DA      | 1396-1⅛ 459 (500-1⅛) |            |   |                      |
| LNAV MDA          | 1460-½ 523 (600-½)   |            | 1460-1 523 (600-1)                      |                      |
| <b>C</b> CIRCLING | 1460-1 523 (600-1)   |            | 1480-1½ 543 (600-1½) 1560-2 623 (700-2) |                      |