

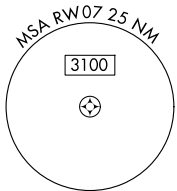
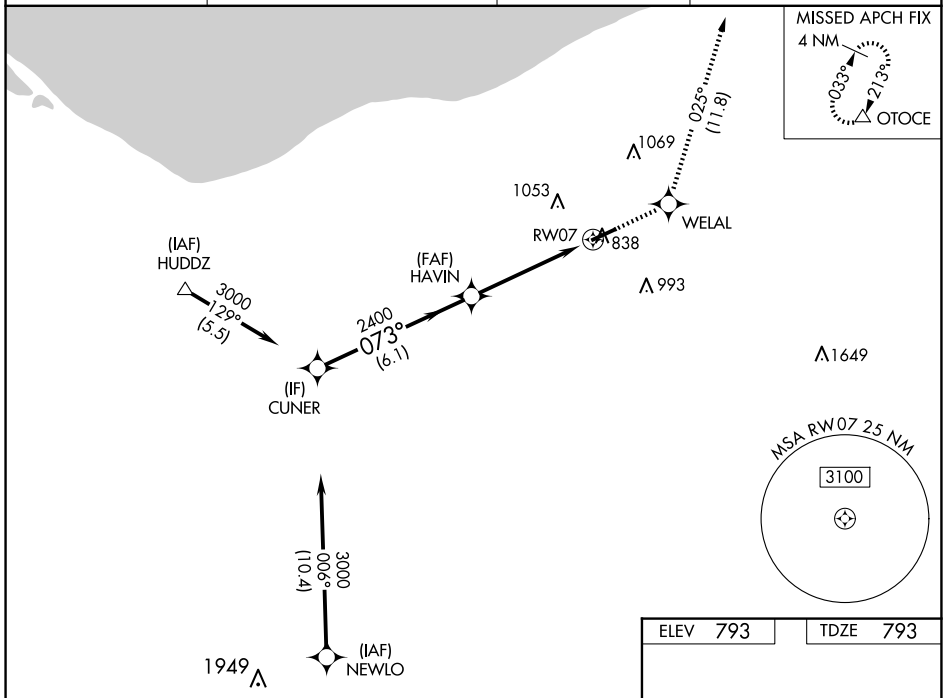
WAAS CH 99612 W07A	APP CRS 073°	Rwy Idg TDZE Apt Elev	5002 793 793
--	------------------------	-----------------------------	---

RNAV (GPS) RWY 7

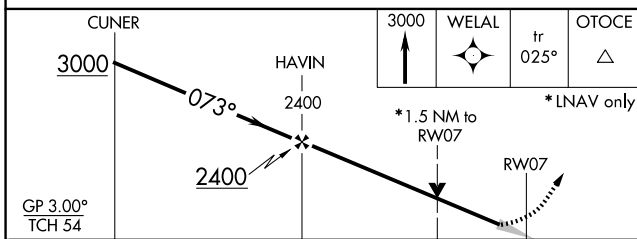
LORAIN COUNTY RGNL (L.P.R.)

RNP APCH.	MALS R	MISSED APPROACH: Climb to 3000 direct WELAL and on track 025° to OTOCE and hold.
For uncompensated Baro-VNAV systems, LNAV/VNAV NA below -16°C (4°F) or above 54°C (130°F).		

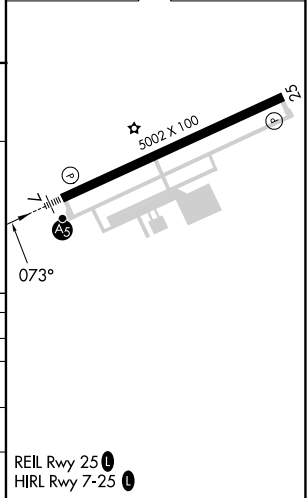
ASOS 118.925	CLEVELAND APP CON 125.35 346.325	CLNC DEL 125.7	UNICOM 122.7 (CTAF)
------------------------	--	--------------------------	-------------------------------



ELEV 793	TDZE 793
----------	----------



CATEGORY	A	B	C	D
LPV DA		993-1/2	200 (200-1/2)	
LNAV/VNAV DA		1133-3/4	340 (400-3/4)	
LNAV MDA	1340-1/2	547 (600-1/2)	1340-1 1/8	547 (600-1 1/8)
CIRCLING	1340-1 547 (600-1)	1360-1 567 (600-1)	1420-1 3/4 627 (700-1 3/4)	1420-2 627 (700-2)



EC-2, 15 MAY 2025 to 12 JUN 2025

EC-2, 15 MAY 2025 to 12 JUN 2025