

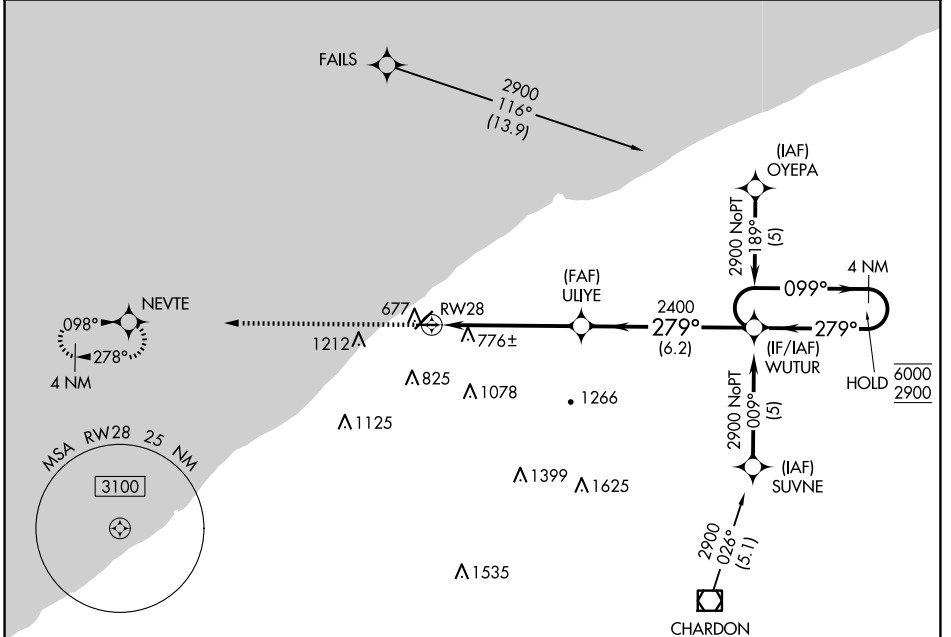
APP CRS	Rwy Idg	3148
279°	TDZE	626
	Apt Elev	626

RNAV (GPS) RWY 28

LAKE COUNTY EXEC (LNN)

RNP APCH - GPS.	MISSED APPROACH: Climb to 2300 direct NEVTE and hold.
▽ ▲	Rwy 28 helicopter visibility reduction below ¾ SM NA.

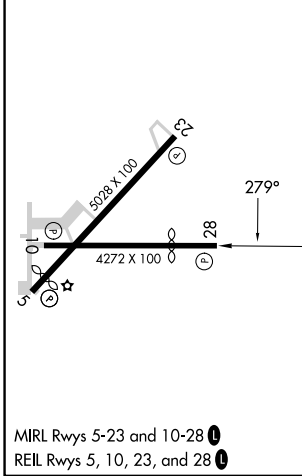
AWOS-3PT 119.225	CLEVELAND APP CON 125.35 346.325	UNICOM 122.725 (CTAF) 0
----------------------------	--	-----------------------------------



EC-2, 15 MAY 2025 to 12 JUN 2025

EC-2, 15 MAY 2025 to 12 JUN 2025

ELEV 626	TDZE 626
----------	----------



2300	NEVTE	VGSI and descent angles not coincident (VGSI Angle 3.50/TCH 26).			
		WUTUR 4 NM Holding Pattern			
CATEGORY	A	B	C	D	
LNAV MDA	1260-1	634 (700-1)	1260-1¾ 634 (700-1¾)	NA	
CIRCLING	1260-1	634 (700-1)	1520-2¾ 894 (900-2¾)	NA	