

WAAS CH 50306 W05B	APP CRS 050°	Rwy Idg 10000 TDZE 791 Apt Elev 796
--	------------------------	--

RNAV (GPS) Y RWY 5R

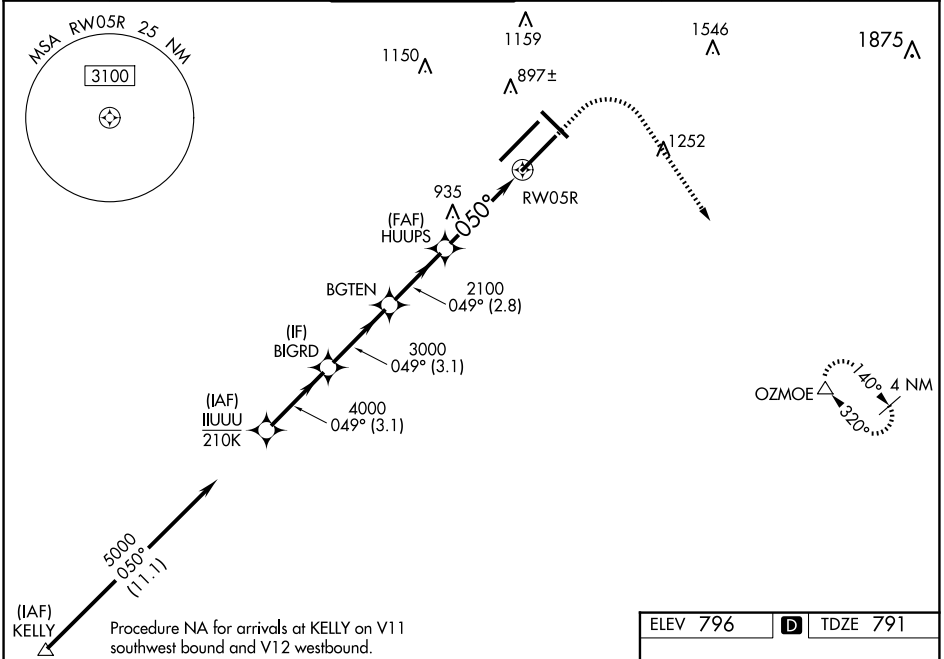
INDIANAPOLIS INTL (IND)

▼ For uncompensated Baro-VNAV systems, LNAV/VNAV NA below -18°C (0°F) or above 54°C (130°F). DME/DME RNP-0.3 NA. Simultaneous approach authorized. LNAV procedure NA during simultaneous operations. Use of FD or AP providing RNAV track guidance required during simultaneous operations.



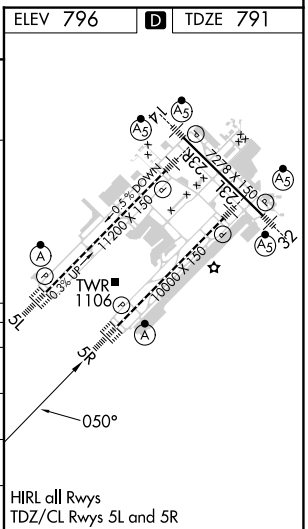
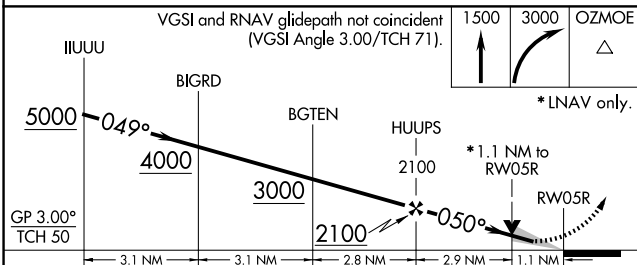
MISSED APPROACH:
Climb to 1500 then climbing right turn to 3000 direct OZMOE and hold.

D-ATIS 134.25	INDIANAPOLIS APP CON 128.175 317.8	INDY TOWER 120.9 251.1	GND CON 121.9	CLNC DEL 128.75 251.1	CPDLC
-------------------------	--	----------------------------------	-------------------------	---------------------------------	-------



EC-2, 15 MAY 2025 to 12 JUN 2025

EC-2, 15 MAY 2025 to 12 JUN 2025



CATEGORY	A	B	C	D
LPV DA		991/18	200 (200-½)	
LNAV/VNAV DA		1172/40	381 (400-¾)	
LNAV MDA	1220/24	429 (500-½)	1220/40	429 (500-¾)
C CIRCLING	1420-1	624 (700-1)	1420-1¾ 624 (700-1¾)	1560-2½ 764 (800-2½)