

WAAS CH 45706 W05A	APP CRS 050°	Rwy Idg 11200 TDZE 747 Apt Elev 796
--	------------------------	--

RNAV (GPS) Y RWY 5L

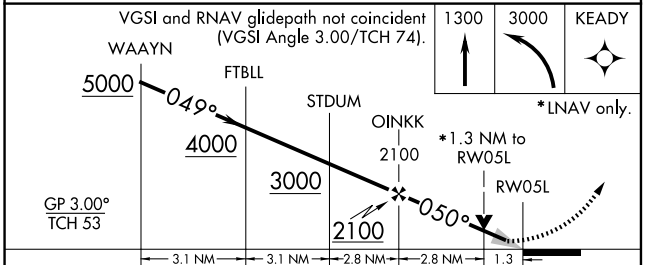
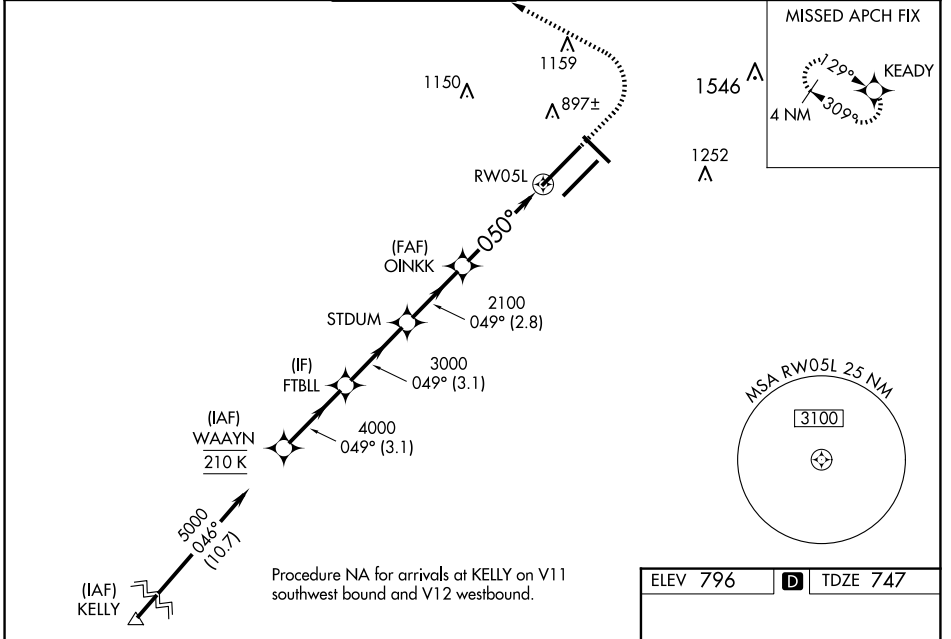
INDIANAPOLIS INTL (IND)

T **A** For uncompensated Baro-VNAV systems, LNAV/VNAV NA below -18°C (0°F) or above 54°C (130°F). DME/DME RNP-0.3 NA. Simultaneous approach authorized. LNAV procedure NA during simultaneous operations. Use of FD or AP providing RNAV track guidance required during simultaneous operations. For inoperative ALS, increase LNAV/VNAV all Cats visibility to 1¼ SM and increase LNAV Cat C/D visibility to 1¾ SM.

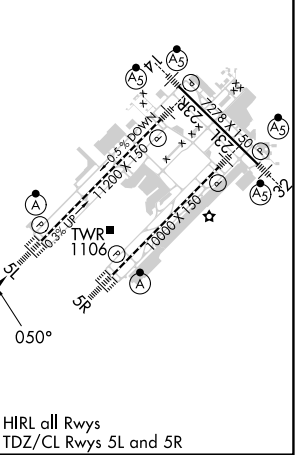
ALS-F-2

MISSED APPROACH: Climb to 1300 then climbing left turn to 3000 direct KEADY and hold.

D-ATIS 134.25	INDIANAPOLIS APP CON 128.175 317.8	INDY TOWER 120.9 251.1	GND CON 121.9	CLNC DEL 128.75 251.1	CPDLC
-------------------------	--	---	-------------------------	---------------------------------	-------



CATEGORY	A	B	C	D
LPV DA	947/18		200 (200-½)	
LNAV/VNAV DA	1136/45		389 (400-¾)	
LNAV MDA	1220/24	473 (500-½)	1220/50	473 (500-1)
C CIRCLING	1420-1	624 (700-1)	1420-1¾ 624 (700-1¾)	1560-2½ 764 (800-2½)



EC-2, 15 MAY 2025 to 12 JUN 2025

EC-2, 15 MAY 2025 to 12 JUN 2025