

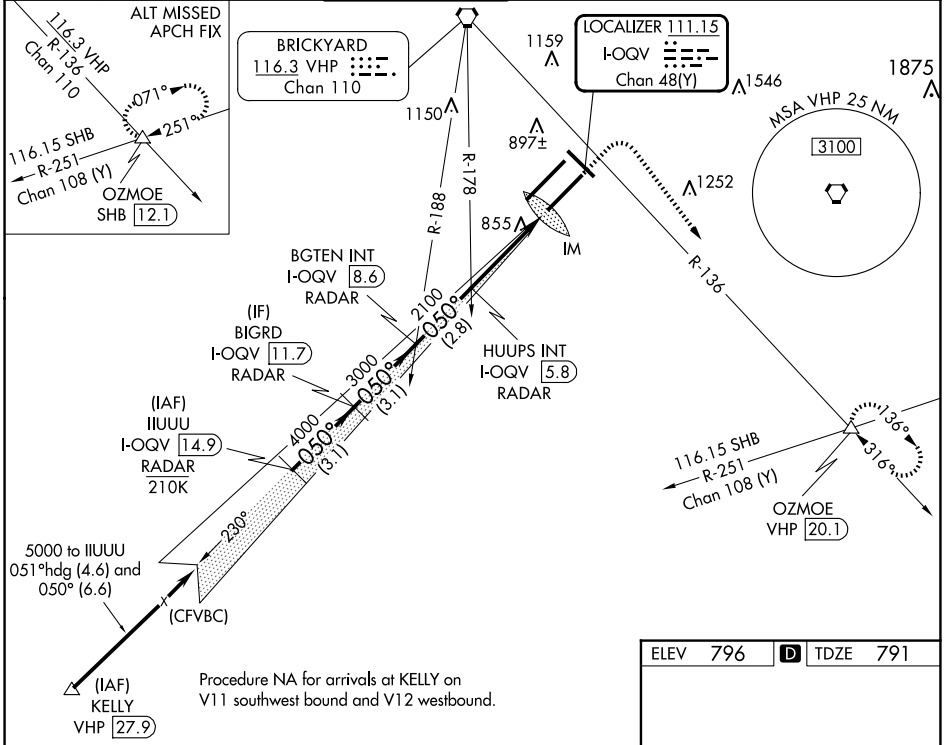
ILS RWY 5R (SA CAT I)

INDIANAPOLIS INTL (IND)

LOC/DME I-QOQ 111.15 Chan 48(Y)	APP CRS 050°	Rwy ldg 10000 TDZE 791 Apt Elev 796
--	------------------------	--

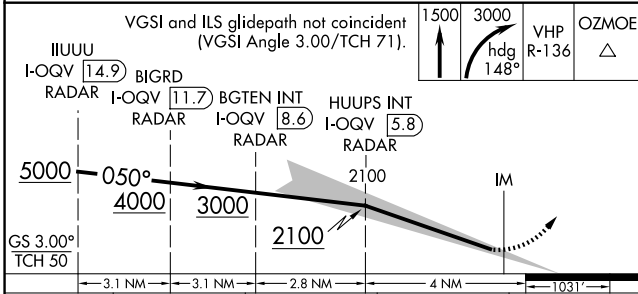
<p>▽ DME or RADAR required. Simultaneous approach authorized. Requires specific OPSPEC, MSPEC, or LOA approval and use of HUD to DH.</p> <p>⚠ MISSED APPROACH: Climb to 1500 then climbing right turn to 3000 on heading 148° and on VHP VORTAC R-136 to OZMOE INT/VHP 20.1 DME and hold.</p>	<p>ALS-F-2</p>
---	----------------

D-ATIS 134.25	INDIANAPOLIS APP CON 128.175 317.8	INDY TOWER 120.9 251.1	GND CON 121.9	CLNC DEL 128.75 251.1	CPDLC
-------------------------	--	----------------------------------	-------------------------	---------------------------------	-------

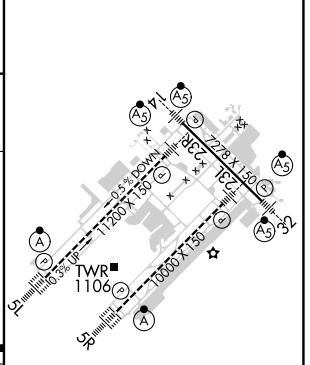


EC-2, 15 MAY 2025 to 12 JUN 2025

EC-2, 15 MAY 2025 to 12 JUN 2025



ELEV 796	D TDZE 791
----------	-------------------



CATEGORY	A	B	C	D
S-ILS 5R	RA 163/14 150 DA 941			

SA CATEGORY I ILS SPECIAL AIRCREW & AIRCRAFT CERTIFICATION REQUIRED

HIRL all Rwys
TDZ/CL Rwys 5L and 5R