

WAAS CH 78419 W20A	APP CRS 202°	Rwy Idg TDZE 1068 Apt Elev 1068	4400 1068 1068
--	------------------------	---	---

RNAV (GPS) RWY 20

GRIMES FLD (I74)

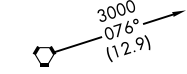
RNP APCH.

⚠ Baro-VNAV NA when using Springfield altimeter setting. For uncompensated Baro-VNAV systems, LNAV/VNAV NA below -17°C (2°F) or above 54°C (130°F). Rwy 20 helicopter visibility reduction below ¼ SM NA. When local altimeter setting not received, use Springfield altimeter setting and increase all DAs 44 feet, all MDAs 60 feet, increase LPV all Cats and LNAV Cat C visibility ¼ SM, and increase Circling Cat C visibility ¼ SM. VDP NA with Springfield altimeter setting. Circling NA to Rwy's 1 and 19.

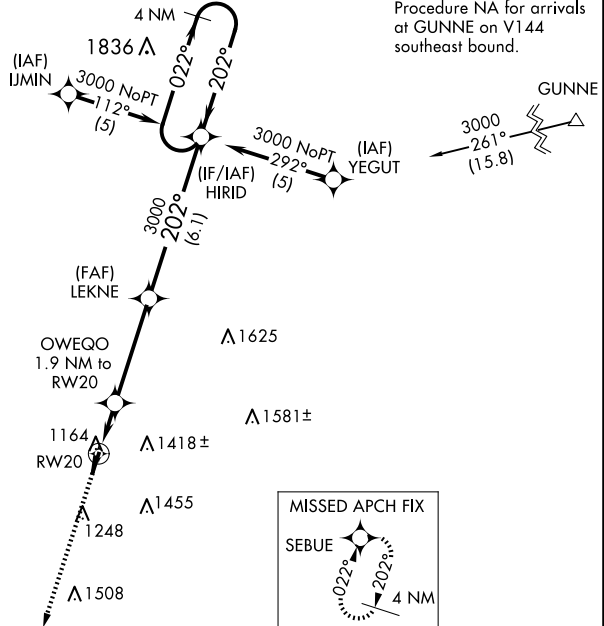
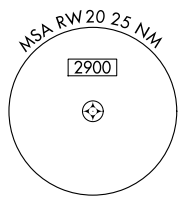
MISSED APPROACH:
Climb to 4000 direct SEBUE and hold.

AWOS-3 118.325	COLUMBUS APP CON 134.45 294.5	UNICOM 122.7 (CTAF) 0
--------------------------	---	---------------------------------

Procedure NA for arrivals on ROD VORTAC airway radials 023 CW 055.



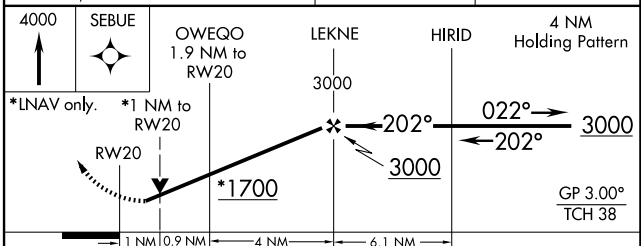
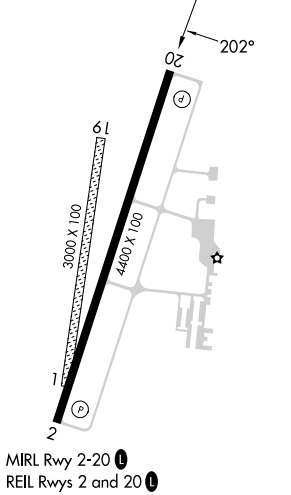
ROSEWOOD ROD



Procedure NA for arrivals at GUNNE on V144 southeast bound.



ELEV 1068	TDZE 1068
-----------	-----------



CATEGORY	A	B	C	D
LPV DA	1347-1	279 (300-1)		NA
LNAV/VNAV DA	1469-1½	401 (500-1½)		NA
LNAV MDA	1420-1	352 (400-1)		NA
C CIRCLING	1580-1 512 (600-1)	1780-1 712 (800-1)	1800-2 732 (800-2)	NA

EC-2, 15 MAY 2025 to 12 JUN 2025

EC-2, 15 MAY 2025 to 12 JUN 2025