

BATAVIA, OHIO

AL-5955 (FAA)

25107

WAAS CH <b>82227</b> <b>W22A</b>	APP CRS <b>220°</b>	Rwy Idg TDZE Apt Elev	<b>3566</b> <b>839</b> <b>843</b>
--	------------------------	-----------------------------	---

# RNAV (GPS) RWY 22

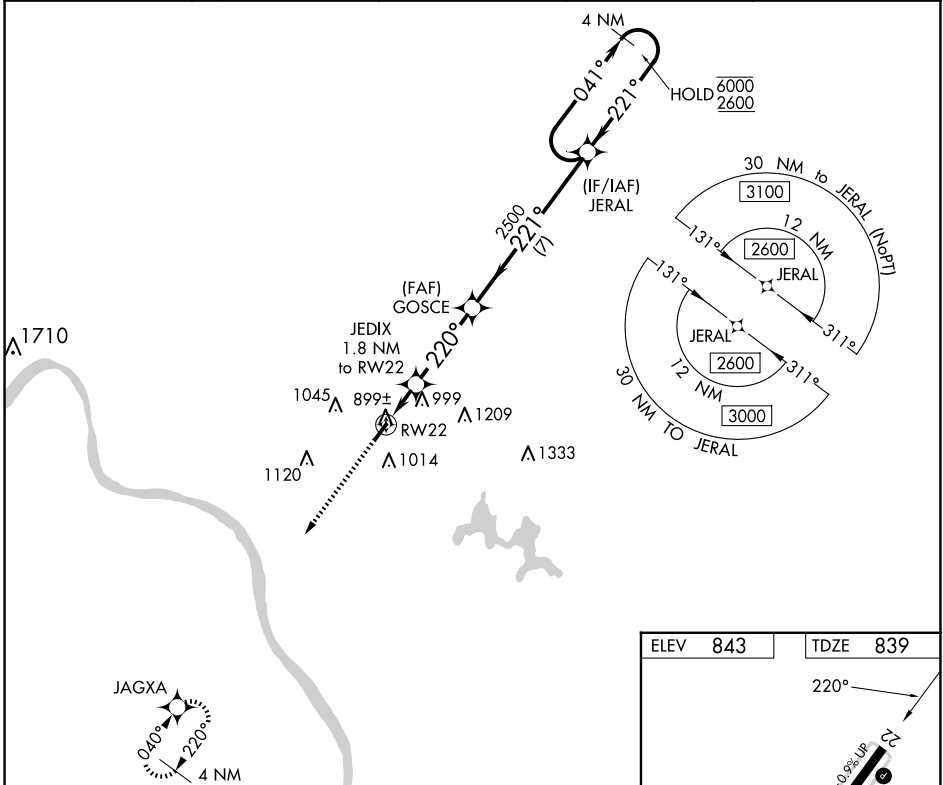
CLERMONT COUNTY (I69)

RNP APCH.

**▼** Circling Rwy 4 NA at night.  
**▲** Rwy 22 helicopter visibility reduction below 1 SM NA.

MISSED APPROACH: Climb to 2500 direct JAGXA and hold.

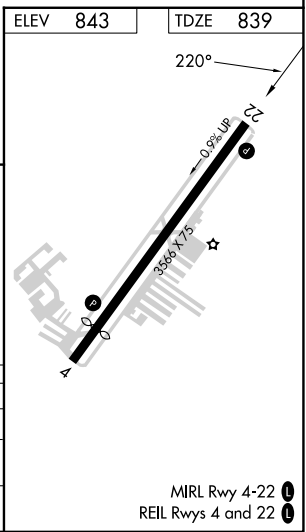
AWOS-3 <b>127.275</b>	CINCINNATI APP CON <b>121.0 254.25</b>	CLNC DEL <b>124.9</b>	UNICOM <b>122.975 (CTAF) ①</b>
--------------------------	---	--------------------------	-----------------------------------



EC-2, 15 MAY 2025 to 12 JUN 2025

EC-2, 15 MAY 2025 to 12 JUN 2025

2500	JAGXA	Visual Segment - Obstacles.		JERAL	4 NM Holding Pattern
↑	✧				
		JEDIX 1.8 NM to RW22	GOSCE		041° → 6000 ← 221° 2600
		RW22			
		1.8	3.4 NM	7 NM	
CATEGORY	A	B	C	D	
LP MDA	1160-1 321 (400-1)			NA	
LNAV MDA	1240-1	401 (400-1)	1240-1 1/8 401 (400-1 1/8)	NA	
<b>C</b> CIRCLING	1320-1 477 (500-1)	1360-1 517 (600-1)	1520-2 677 (700-2)	NA	



BATAVIA, OHIO  
Amdt 2 25FEB21

39°05'N-84°13'W

# RNAV (GPS) RWY 22

CLERMONT COUNTY (I69)