

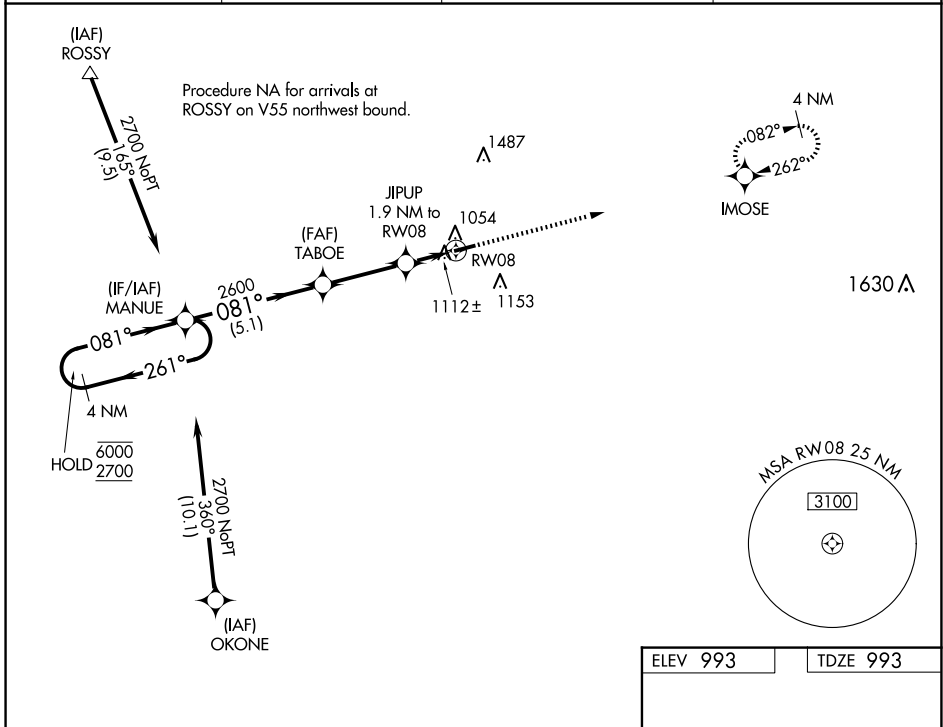
WAAS CH 48845 W08A	APP CRS 081°	Rwy Idg TDZE 993 Apt Elev 993	3998
--	------------------------	---	-------------

RNAV (GPS) RWY 8

PIQUA/HARTZELL FLD (I17)

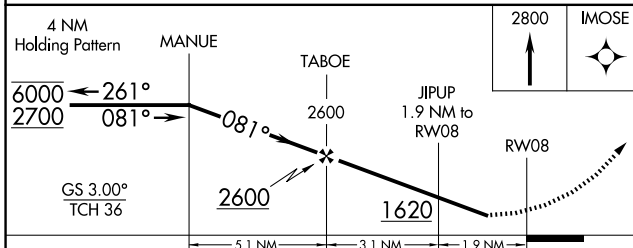
RNP APCH - GPS.	MISSED APPROACH: Climb to 2800 direct IMOSE and hold.
<p>V Rwy 8 helicopter visibility reduction below 3/4 SM NA.</p> <p>Δ NA Baro-VNAV NA. Use Versailles altimeter setting.</p>	

DAY ASOS 125.8	VES AWOS-3PT 125.9	COLUMBUS APP CON 134.45 294.5 352.05	UNICOM 123.0 (CTAF) 0
--------------------------	------------------------------	--	--



EC-2, 15 MAY 2025 to 12 JUN 2025

EC-2, 15 MAY 2025 to 12 JUN 2025



ELEV 993	TDZE 993
----------	----------

3998 X 75

75

081°

MIRL Rwy 8-26 **0**

REIL Rwy 8 and 26 **0**

CATEGORY	A	B	C	D
LPV DA	1322-1	329 (400-1)		NA
LNAV/VNAV DA	1400-1 1/8	407 (500-1 1/8)		NA
LNAV MDA	1400-1	407 (500-1)	1400-1 1/8 407 (500-1 1/8)	NA
C CIRCLING	1440-1 447 (500-1)	1540-1 547 (600-1)	1560-1 1/2 567 (600-1 1/2)	NA