

LOC I-HUF <b>109.7</b>	APP CRS <b>049°</b>	Rwy Idg TDZE Apt Elev	<b>9020</b> <b>573</b> <b>589</b>
---------------------------	------------------------	-----------------------------	---

# ILS or LOC RWY 5

TERRE HAUTE RGNL (HUF)

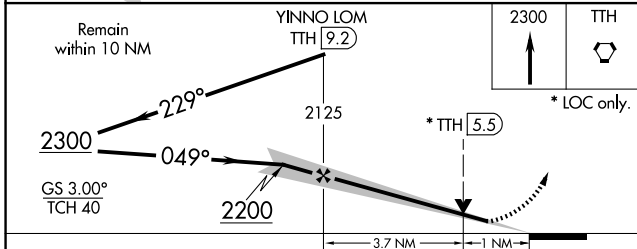
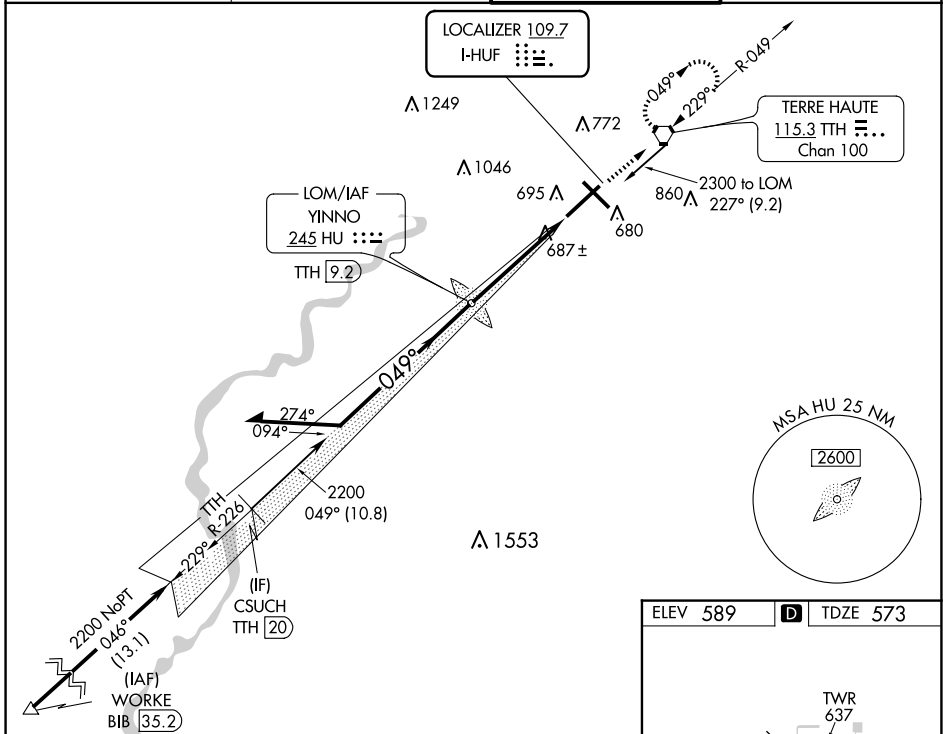
ADF or DME required.

**▽** VDP NA when using Paris altimeter setting. When local altimeter setting not received, use Paris altimeter setting and increase all DA 61 feet and all MDA 80 feet, increase S-LOC 5 Cats C/D visibility to RVR 4500. For inop ALS, increase S-LOC 5 Cat C/D visibility to RVR 5500, when using Paris altimeter setting increase S-ILS 5 all Cats visibilities to RVR 4500 and S-LOC Rwy 5 all Cats visibility 1/2 SM. \*\*RVR 1800 authorized with use of FD or AP or HUD to DA, NA when using Paris altimeter setting.

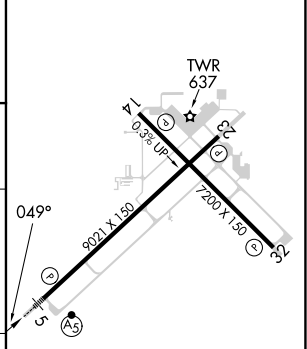
**▲** MALSR

**▲** MISSED APPROACH: Climb to 2300 direct TTH VORTAC and hold.

ATIS <b>127.5 269.375</b>	HULMAN APP CON <b>125.45 339.8</b>	HULMAN TOWER <b>134.725 322.475</b>	GND CON <b>121.6 348.6</b>
------------------------------	---------------------------------------	--	-------------------------------



ELEV 589	<b>D</b>	TDZE 573
----------	----------	----------



CATEGORY	A	B	C	D
S-ILS 5 **	773/24 200 (200-1/2)			
S-LOC 5	940/24	367 (400-1/2)	940/35	367 (400-5/8)
<b>C</b> CIRCLING	1040-1 451 (500-1)	1040-1 451 (500-1)	1220-1 3/4 631 (700-1 3/4)	1220-2 631 (700-2)

REIL Rwy 14, 23 and 32				
HIRL Rwy 5-23 and 14-32				
FAF to MAP 4.7 NM				
Knots	60	90	120	150 180
Min:Sec	4:42	3:08	2:21	1:53 1:34

EC-2, 15 MAY 2025 to 12 JUN 2025

EC-2, 15 MAY 2025 to 12 JUN 2025