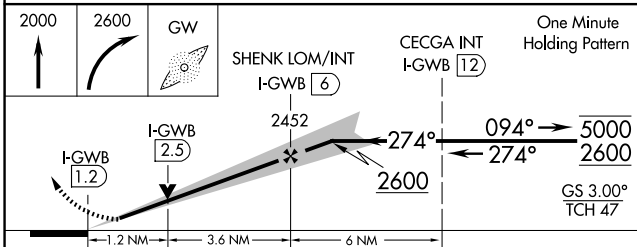
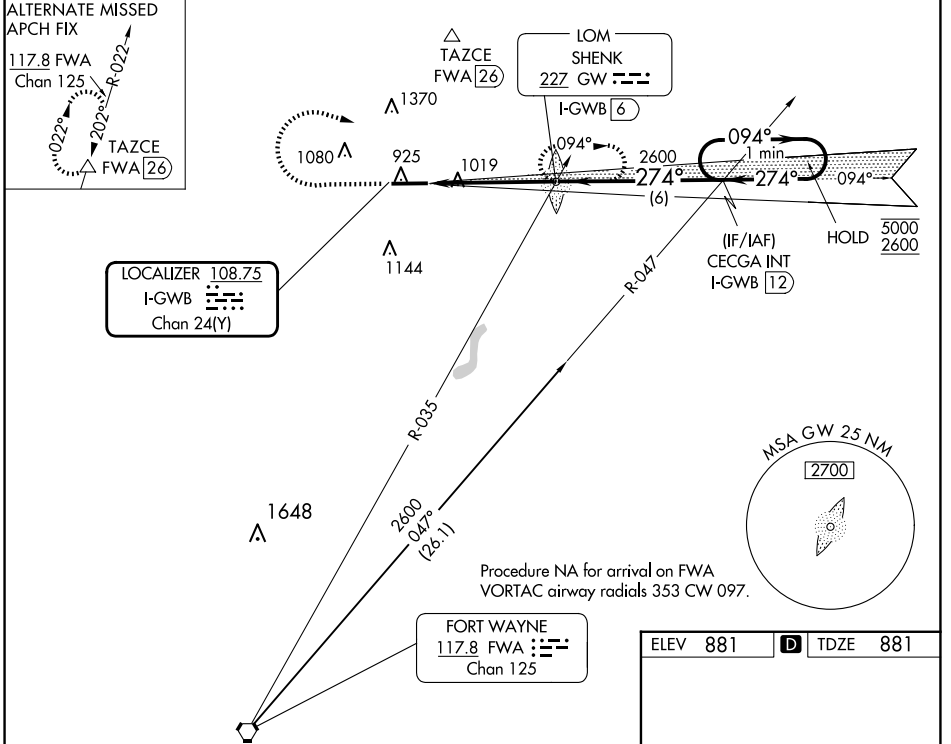


LOC/DME I-GWB 108.75 Chan 24(Y)	APP CRS 274°	Rwy Idg 6356 TDZE 881 Apt Elev 881
--	------------------------	---

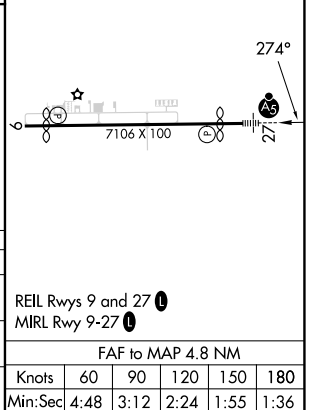
ILS or LOC RWY 27

DE KALB COUNTY (GWB)

NA	MALSR	MISSED APPROACH: Climb to 2000 then climbing right turn to 2600 direct SHENK LOM/INT/ I-GWB 6 DME and hold.	
AWOS-3P 124.15	FORT WAYNE APP CON 127.2 284.6	CLNC DEL 126.6	UNICOM 123.0 (CTAF) 0



ELEV 881	TDZE 881			
2000	2600	GW		
S-ILS 27	1081-1/2	200 (200-1/2)		
S-LOC 27	1320-1/2 439 (500-1/2)	1320-3/4 439 (500-3/4)		
CIRCLING	1320-1 439 (500-1)	1560-1 679 (700-1)	1720-2 1/2 839 (900-2 1/2)	1720-2 3/4 839 (900-2 3/4)



EC-2, 15 MAY 2025 to 12 JUN 2025

EC-2, 15 MAY 2025 to 12 JUN 2025