

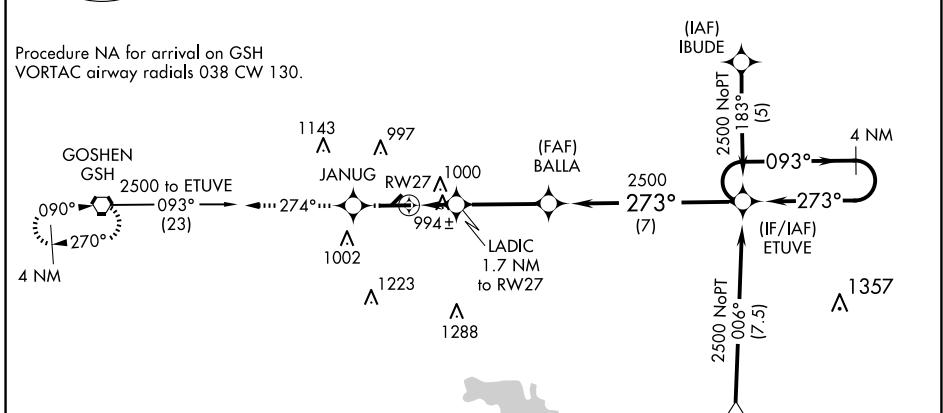
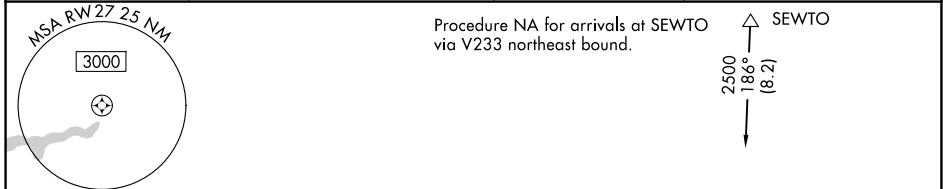
WAAS CH <b>97606</b> <b>W27A</b>	APP CRS <b>273°</b>	Rwy Idg TDZE Apt Elev	<b>6050</b> <b>827</b> <b>827</b>
--	------------------------	-----------------------------	---

# RNAV (GPS) RWY 27

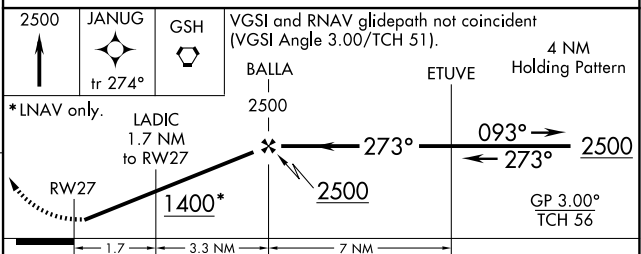
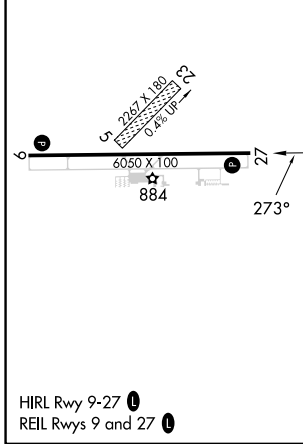
GOSHEN MUNI (GSH)

RNP APCH.  
 ▼ Baro-VNAV NA when using Warsaw Muni altimeter setting. For uncompensated Baro-VNAV systems, LNAV/VNAV NA below -16°C or above 47°C. When local altimeter setting not received, use Warsaw altimeter setting: increase LPV DA to 1160 feet, LNAV/VNAV DA to 1347 feet, and all MDAs 40 feet; increase LPV visibility all Cats 1/8 SM, LNAV visibility Cats C/D 1/8 SM and Circling visibility Cat D 1/4 SM. Circling NA to Rwy 5 and 23. Rwy 27 helicopter visibility reduction below 1/4 SM NA.  
 MISSED APPROACH: Climb to 2500 direct JANUG and on 274° track to GSH VORTAC and hold.

ASOS <b>121.45</b>	SOUTH BEND APP CON * <b>132.05 257.8</b>	CLNC DEL <b>125.25</b>	UNICOM <b>123.05 (CTAF) ①</b>
-----------------------	---	---------------------------	----------------------------------



ELEV 827	TDZE 827
----------	----------



CATEGORY	A	B	C	D
LPV DA	1120-1 293 (300-1)			
LNAV/ VNAV DA	1307-1 1/4 480 (500-1 1/4)			
LNAV MDA	1260-1	433 (500-1)	1260-1 1/4 433 (500-1 1/4)	1260-1 1/2 433 (500-1 1/2)
CIRCLING	1300-1 473 (500-1)	1320-1 493 (500-1)	1500-2 673 (700-2)	1540-2 1/4 713 (800-2 1/4)

EC-2, 15 MAY 2025 to 12 JUN 2025

EC-2, 15 MAY 2025 to 12 JUN 2025