

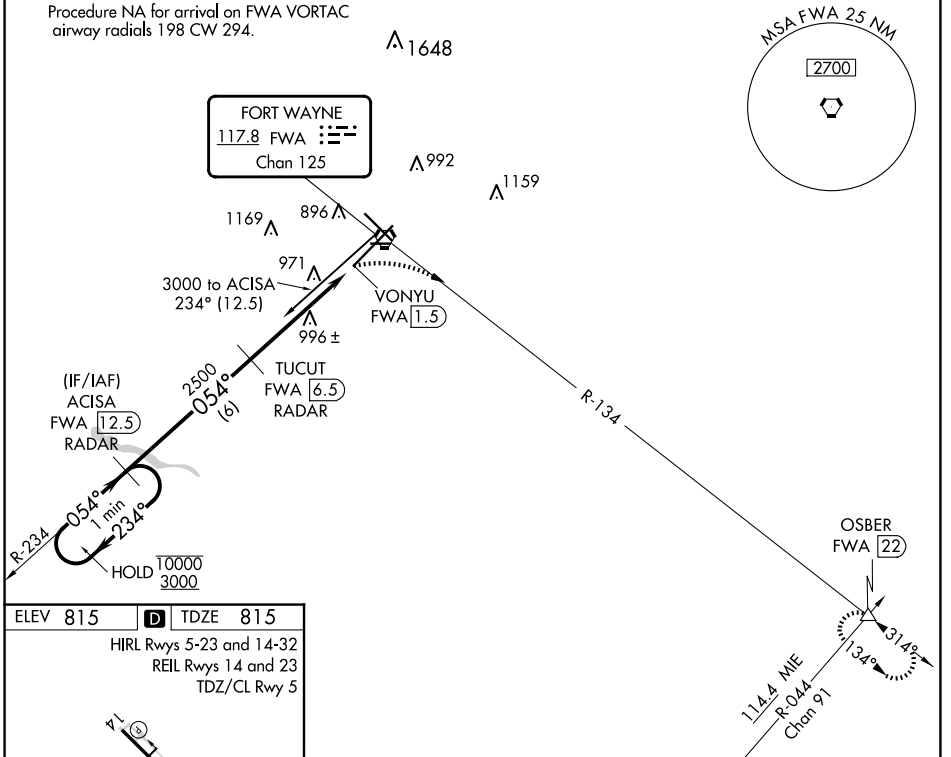
VORTAC FWA 117.8 Chan 125	APP CRS 054°	Rwy Idg TDZE 815 Apt Elev 815
---	------------------------	---

VOR or TACAN RWY 5

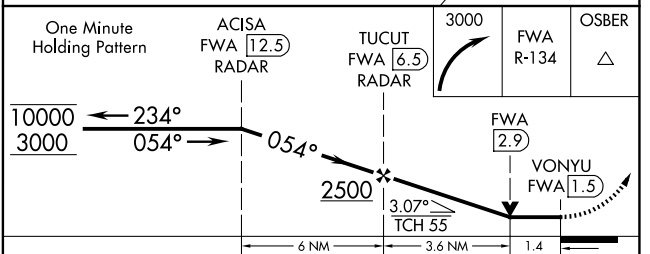
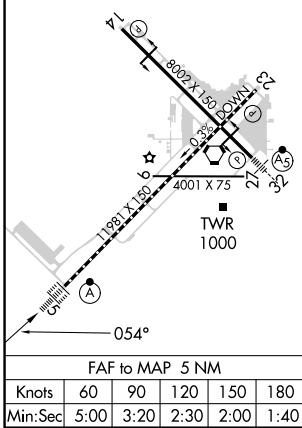
FORT WAYNE INTL (FWA)

DME or RADAR required.		ALSF-2 	MISSED APPROACH: Climbing right turn to 3000 on FWA VORTAC R-134 to OSBER INT/FWA 22 DME and hold.	
ATIS 121.25 360.825	FORT WAYNE APP CON 127.2 284.6	FORT WAYNE TOWER 119.1 269.325	GND CON 121.9 348.6	CLNC DEL 124.75

Procedure NA for arrival on FWA VORTAC
airway radials 198 CW 294.



ELEV 815	D	TDZE 815
HIRL Rwy 5-23 and 14-32 REIL Rwy 14 and 23 TDZ/CL Rwy 5		



CATEGORY	A	B	C	D	E
S-5	1320/24	505 (600-1/2)	1320/55	505 (600-1)	1320/60 505 (600-1 1/4)
C CIRCLING	1320-1	505 (600-1)	1360-1 1/2 545 (600-1 1/2)	1520-2 1/4 705 (800-2 1/4)	1520-2 1/2 705 (800-2 1/2)

EC-2, 15 MAY 2025 to 12 JUN 2025

EC-2, 15 MAY 2025 to 12 JUN 2025