

LOC I-EYE	APP CRS	Rwy Idg	4200
111.5	211°	TDZE	823
		Apt Elev	823

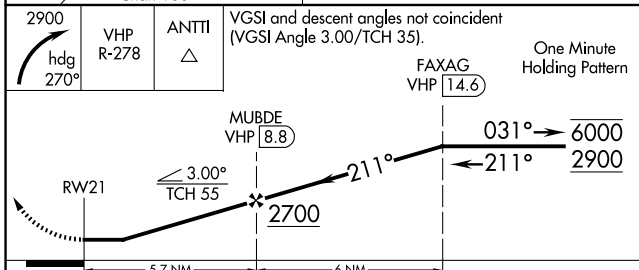
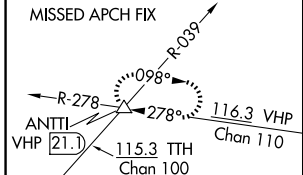
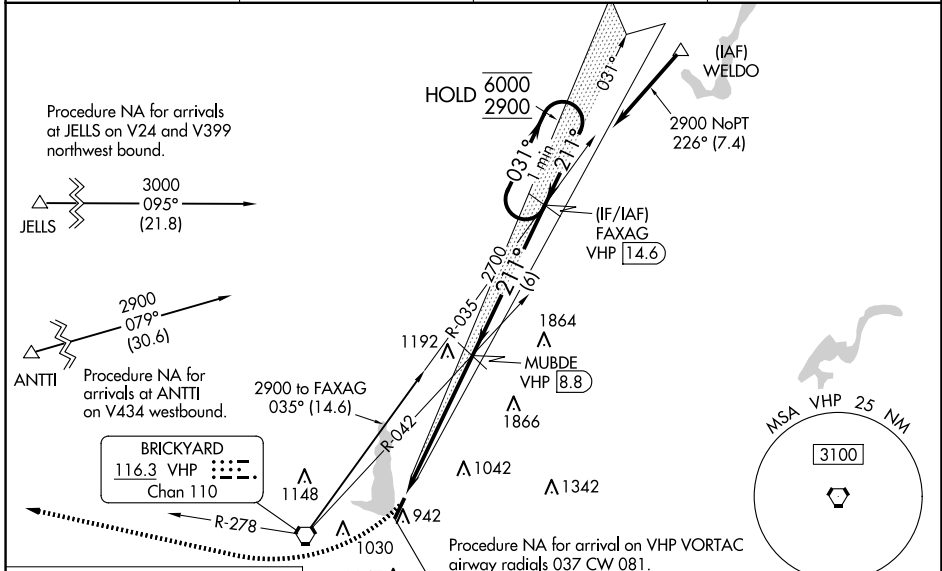
LOC RWY 21

EAGLE CREEK AIRPARK (EYE)

RNP APCH - GPS. From ANTTI or JELLS or WELDO.
 DME Required.
 Rwy 21 helicopter visibility reduction below 3/4 SM NA. Inop table does not apply to S-21 Cats A and B. When local altimeter setting not received, use Indianapolis Intl altimeter setting and increase all MDAs 20 feet. For inop ALS, increase Cat C visibility to 1 1/2 SM.

MALS \odot \equiv MISSED APPROACH: Climbing right turn to 2900 on heading 270° and VHP R-278 to ANTTI INT/VHP 21.1 DME and hold.

ASOS	INDIANAPOLIS APP CON	CLNC DEL	UNICOM
121.575	119.05 317.8	128.6	122.8 (CTAF) 0



ELEV	823	TDZE	823
------	------------	------	------------

MRL Rwy 3-21
 REIL Rwy 3

FAF to MAP 5.7 NM					
Knots	60	90	120	150	180
Min:Sec	5:42	3:48	2:51	2:17	1:54

CATEGORY	A	B	C	D
S-21	1340-1	517 (600-1)	1340-1 1/4 517 (600-1 1/4)	NA
CIRCLING	1340-1 517 (600-1)	1340-2 517 (600-2)	1500-2 677 (700-2)	NA

EC-2, 15 MAY 2025 to 12 JUN 2025

EC-2, 15 MAY 2025 to 12 JUN 2025