

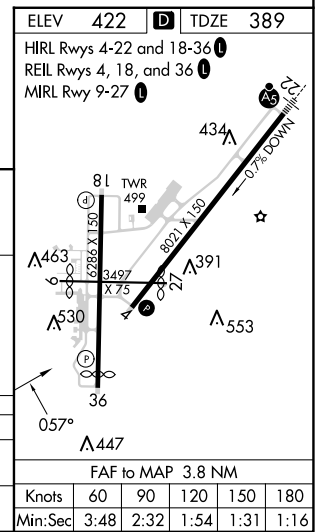
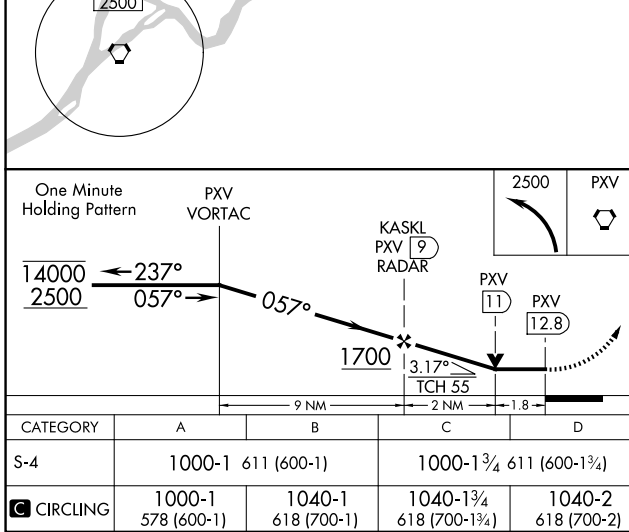
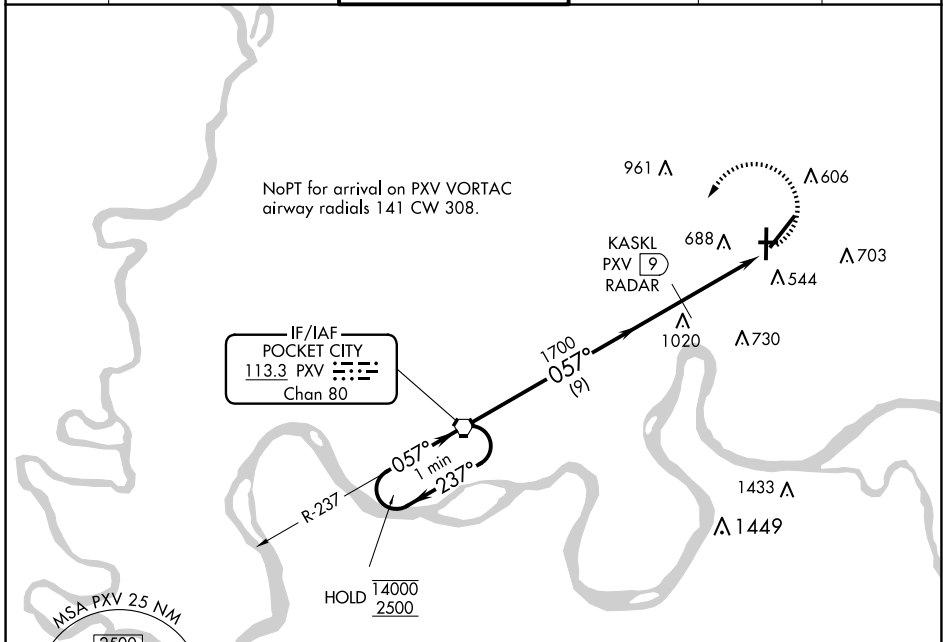
VORTAC PXV 113.3 Chan 80	APP CRS 057°	Rwy Idg TDZE Apt Elev 8021 389 422
--	------------------------	--

VOR RWY 4

EVANSVILLE RGNL (EVV)

DME or RADAR required.		MISSED APPROACH: Climbing left turn to 2500 direct PXV VORTAC and hold.		
ASR RWY 4 helicopter visibility reduction below 3/4 SM NA. Circling Rwy 9 NA at night.				

ATIS 120.2	EVANSVILLE APP CON ★ 124.025 290.9	EVANSVILLE TOWER ★ 118.7 (CTAF) 257.8	GND CON 121.9	CLNC DEL 126.6	UNICOM 122.95
----------------------	--	---	-------------------------	--------------------------	-------------------------



EVANSVILLE, INDIANA Amdt 7A 13SEP18		38°02'N-87°32'W		EVANSVILLE RGNL (EVV) VOR RWY 4	
--	--	-----------------	--	---	--

EC-2, 15 MAY 2025 to 12 JUN 2025

EC-2, 15 MAY 2025 to 12 JUN 2025