

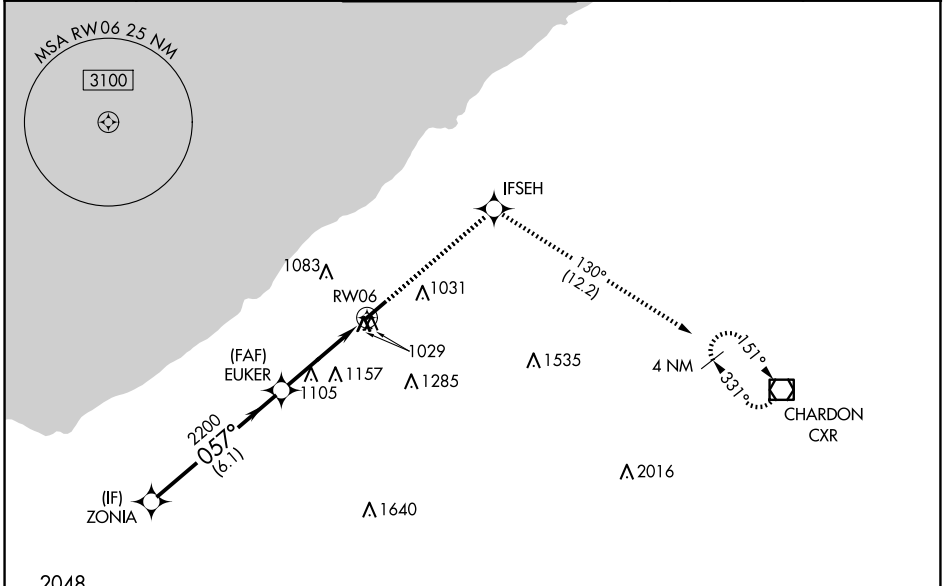
WAAS CH <b>70628</b> <b>W06A</b>	APP CRS <b>057°</b>	Rwy Idg TDZE Apt Elev	<b>5184</b> <b>874</b> <b>876</b>
--	------------------------	-----------------------------	---

# RNAV (GPS) RWY 6

CUYAHOGA COUNTY (CGF)

RNP APCH.		MISSED APPROACH: Climb to 3100 direct IFSEH and on track 130° to CXR VOR/DME and hold.	
<b>⚠</b> Rwy 6 helicopter visibility reduction below 3/4 SM NA. <b>⚠</b> For uncompensated Baro-VNAV systems, LNAV/VNAV NA below -16°C or above 38°C.			

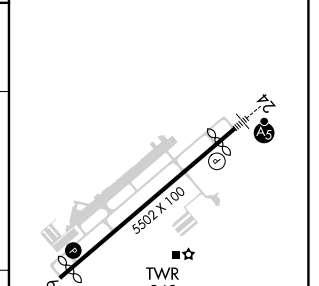
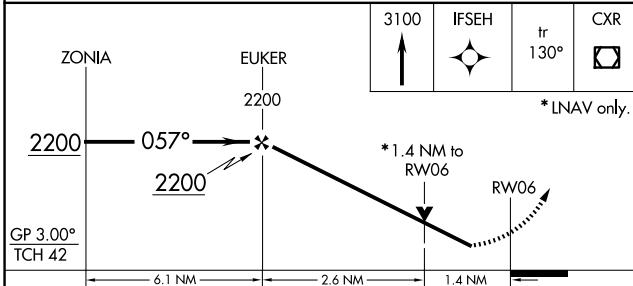
D-ATIS <b>119.95</b>	CLEVELAND APP CON <b>125.35 346.325</b>	COUNTY TOWER★ <b>118.5 (CTAF) 0</b>	GND CON <b>121.85</b>	CLNC DEL <b>121.85</b> (when tower closed)
-------------------------	--	--	--------------------------	--



EC-2, 15 MAY 2025 to 12 JUN 2025

EC-2, 15 MAY 2025 to 12 JUN 2025

ELEV 876	<b>D</b> TDZE 874
----------	-------------------



CATEGORY	A	B	C	D
LPV DA		1175-7/8	301 (300-7/8)	
LNAV/VNAV DA		1375-1 3/8	501 (500-1 3/8)	
LNAV MDA	1360-1	486 (500-1)	1360-1 3/8	486 (500-1 3/8)
<b>C</b> CIRCLING	1400-1 524 (600-1)	1500-1 624 (700-1)	1560-2 684 (700-2)	1600-2 1/4 724 (800-2 1/4)

REIL Rwy 6 **0**  
HIRL Rwy 6-24 **0**