

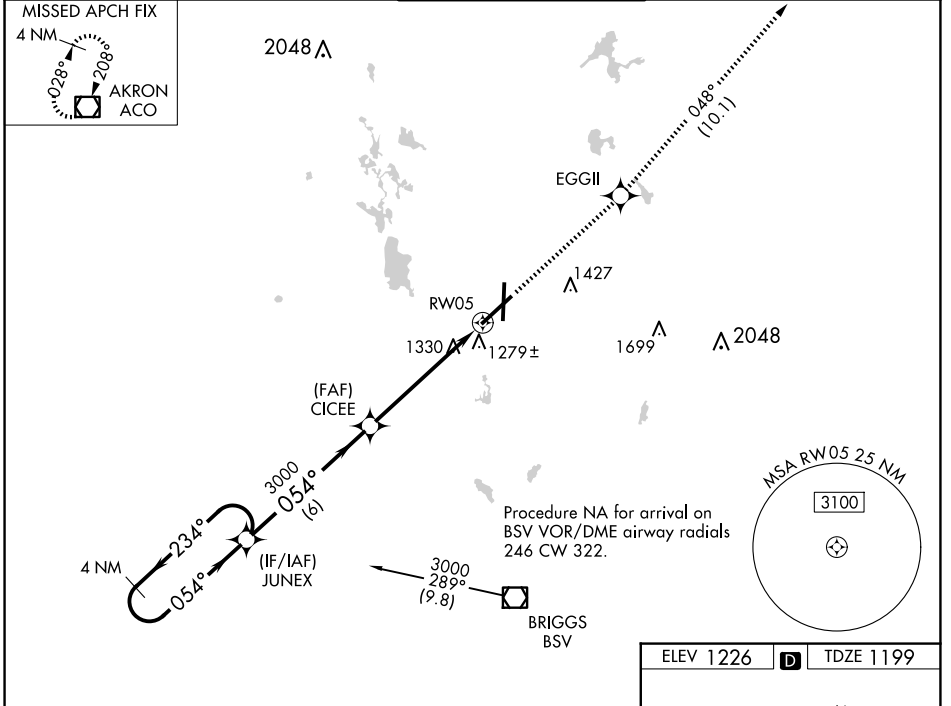
WAAS CH <b>77620</b> <b>W05A</b>	APP CRS <b>054°</b>	Rwy Idg TDZE Apt Elev	<b>8204</b> <b>1199</b> <b>1226</b>
--	------------------------	-----------------------------	---

# RNAV (GPS) RWY 5

## AKRON-CANTON RGNL (CAK)

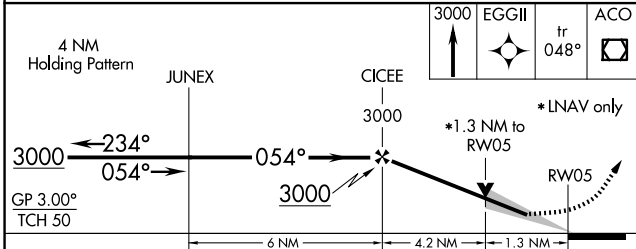
<p><b>▼</b> For uncompensated Baro-VNAV systems, LNAV/VNAV NA below -17°C (2°F) or above 46°C (114°F). DME/DME RNP-0.3 NA. ** RVR 1800 authorized with use of FD or AP or HUD to DA.</p>	<p><b>MALSR</b></p>	<p><b>MISSED APPROACH:</b> Climb to 3000 direct EGGII and on track 048° to ACO VOR/DME and hold.</p>
--	---------------------	--

<p><b>ATIS</b> <b>121.05</b></p>	<p><b>CLEVELAND APP CON *</b> <b>125.5 269.25</b></p>	<p><b>AKRON-CANTON TOWER</b> <b>134.75 279.575</b></p>	<p><b>GND CON</b> <b>121.7 348.6</b></p>	<p><b>CLNC DEL</b> <b>132.05</b></p>
--------------------------------------	---	--	--	--



EC-2, 15 MAY 2025 to 12 JUN 2025

EC-2, 15 MAY 2025 to 12 JUN 2025



CATEGORY	A	B	C	D
LPV DA**		1399/24	200 (200-½)	
LNAV/VNAV DA		1577/50	378 (400-1)	
LNAV MDA	1640/24	441 (500-½)	1640/40 441 (500-¾)	1640/50 441 (500-1)
CIRCLING	1760-1	534 (600-1)	1780-1½ 554 (600-1½)	1800-2 574 (600-2)

