


LOC/DME I-EQX 108.3 Chan 20	APP CRS 054°	Rwy ldg TDZE Apt Elev	8204 1199 1226
---	------------------------	-----------------------------	---

ILS or LOC RWY 5

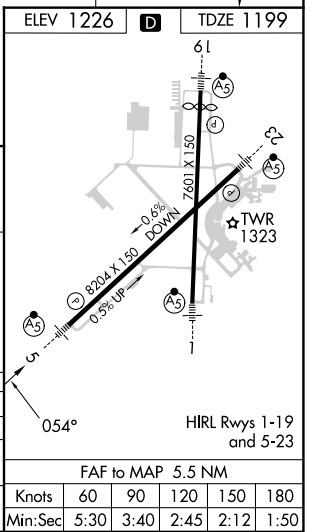
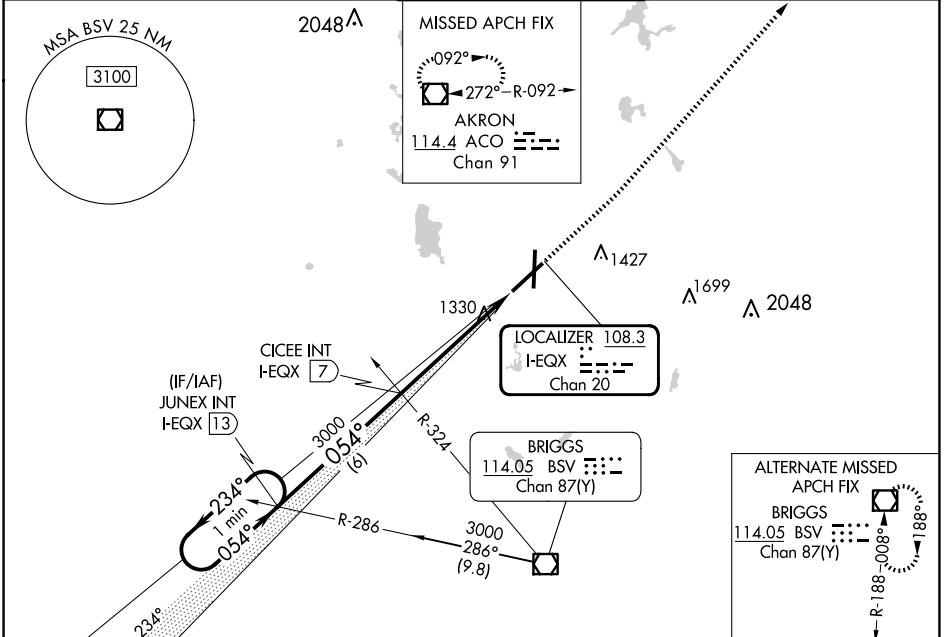
AKRON-CANTON RGNL (CAK)

∇ **RVR 1800 authorized with use of FD or AP or HUD to DA.

MALSR 

MISSED APPROACH: Climb to 2000 then climbing left turn to 3000 direct ACO VOR/DME and hold.

ATIS 121.05	CLEVELAND APP CON * 125.5 269.25	AKRON-CANTON TOWER 134.75 279.575	GND CON 121.7 348.6	CLNC DEL 132.05
-----------------------	--	---	-------------------------------	---------------------------



CATEGORY	A	B	C	D
S-ILS 5	**1399/24 200 (200-½)			
S-LOC 5	1640/24 441 (500-½)	1640/45 441 (500-¾)		
CIRCLING	1760-1 534 (600-1)	1780-1½ 554 (600-1½)	1800-2 574 (600-2)	

EC-2, 15 MAY 2025 to 12 JUN 2025

EC-2, 15 MAY 2025 to 12 JUN 2025