

| | | |
|--|------------------------|---|
| VOR/DME AIR 117.1 Chan 118 | APP CRS 274° | Rwy Idg 4003 TDZE 1312 Apt Elev 1312 |
|--|------------------------|---|

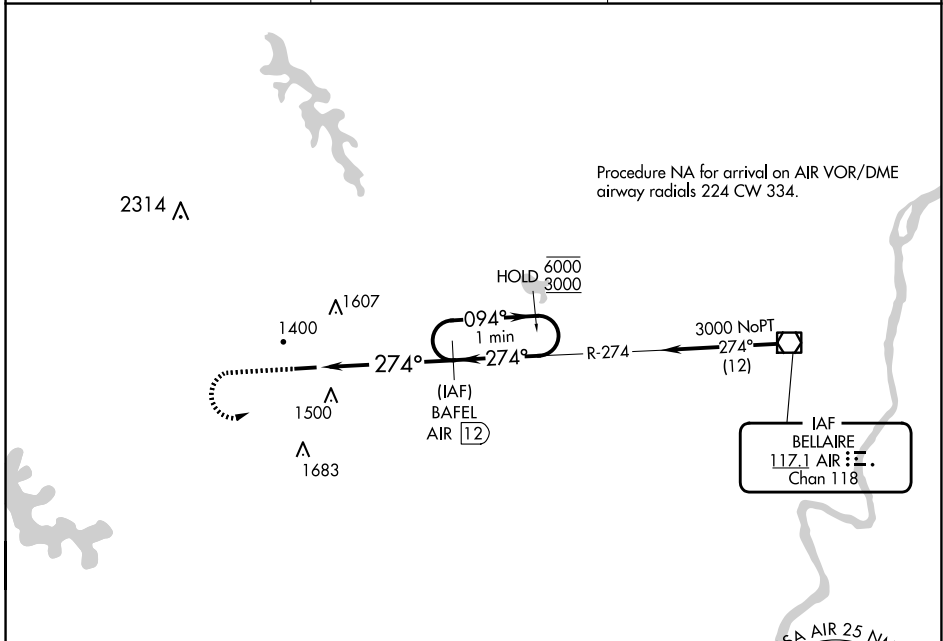
VOR/DME RWY 27

BARNESVILLE/BRADFIELD (6G5)

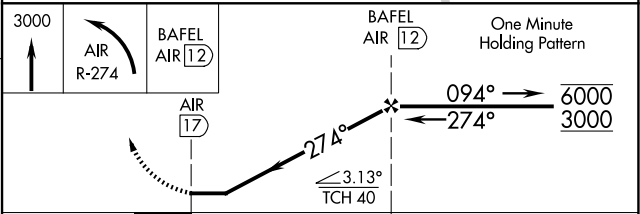
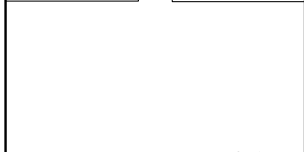
⚠ Rwy 27 helicopter visibility reduction below 1 SM NA.
⚠ Procedure NA at night. Use HLG altimeter setting, when not received, use AFJ altimeter setting and increase all MDAs 40 feet.

MISSED APPROACH: Climb to 3000, then left turn on AIR VOR/DME R-274 to BAFEL/AIR 12 DME and hold.

| | | |
|----------------------------|---|--|
| HLG ASOS 127.375 | CLEVELAND CENTER 126.95 239.3 | UNICOM 123.0 (CTAF) 📻 |
|----------------------------|---|--|



| | |
|-----------|-----------|
| ELEV 1312 | TDZE 1312 |
|-----------|-----------|



| CATEGORY | A | B | C | D |
|-------------------|--------|-------------|----|---|
| S-27 | 1940-1 | 628 (700-1) | NA | |
| 📻 CIRCLING | 1940-1 | 628 (700-1) | NA | |

MRL Rwy 9-27 **📻**
 REIL Rwy 27 **📻**

EC-2, 15 MAY 2025 to 12 JUN 2025

EC-2, 15 MAY 2025 to 12 JUN 2025