

APP CRS <b>249°</b>	Rwy Idg <b>3503</b>
	TDZE <b>1160</b>
	Apt Elev <b>1160</b>

# RNAV (GPS) RWY 25

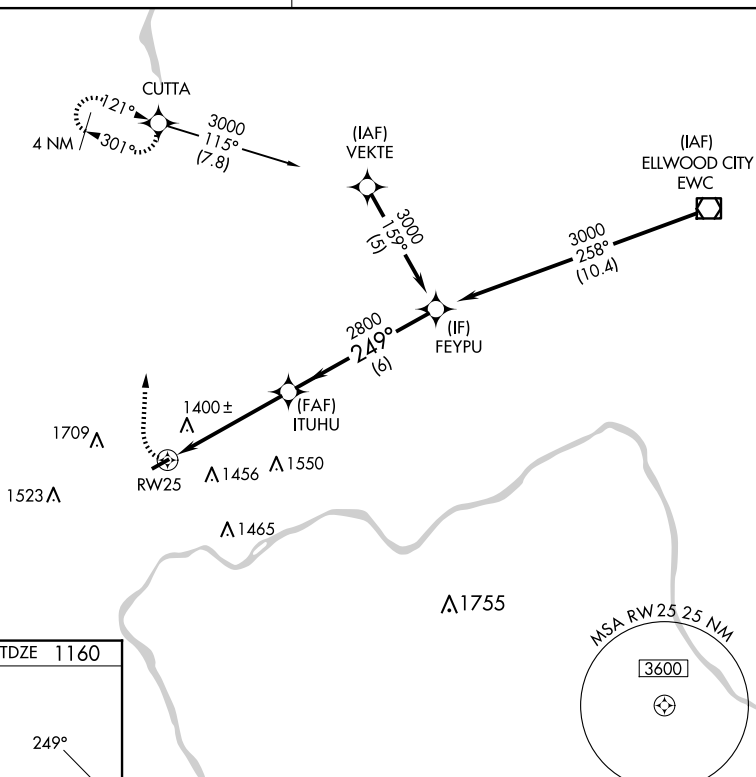
COLUMBIANA COUNTY (Ø2G)

**NA** DME/DME RNP-0.3 NA. Use Pittsburgh Intl altimeter setting, when not received use Wheeling, WV altimeter setting and increase all MDA 20 feet; increase LNAV Cat C visibility ¼ SM, and Circling Cat A visibility ¼ SM. Rwy 25 helicopter visibility reduction below ¾ SM NA.

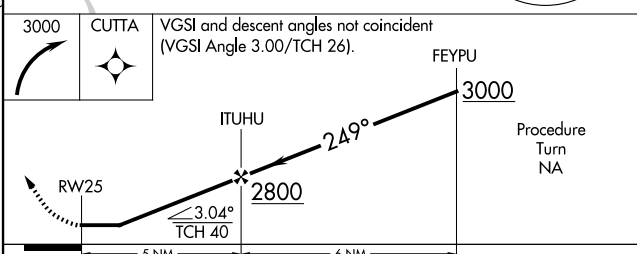
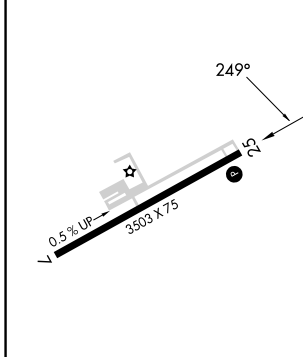
**MISSED APPROACH:** Climbing right turn to 3000 direct CUTTA and hold.

PITTSBURGH APP CON  
**124.75 338.2**

UNICOM  
**123.0 (CTAF)**



ELEV 1160	TDZE 1160
-----------	-----------



CATEGORY	A	B	C	D
LNAV MDA	1760-1	600 (600-1)	1760-1½ 600 (600-1½)	NA
CIRCLING	1960-1 800 (800-1)	1960-1¼ 800 (800-1¼)	2080-2¾ 920 (1000-2¾)	NA

REIL Rwy 7-25 **Ø**  
MIRL Rwy 7-25 **Ø**

EC-2, 15 MAY 2025 to 12 JUN 2025

EC-2, 15 MAY 2025 to 12 JUN 2025