

WAAS CH 99727 W28A	APP CRS 277°	Rwy Idg TDZE Apt Elev	4004 637 640
--	------------------------	-----------------------------	---

RNAV (GPS) RWY 28

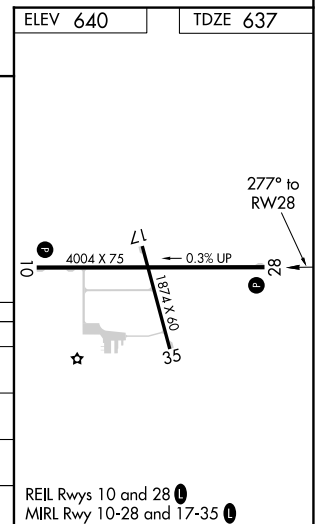
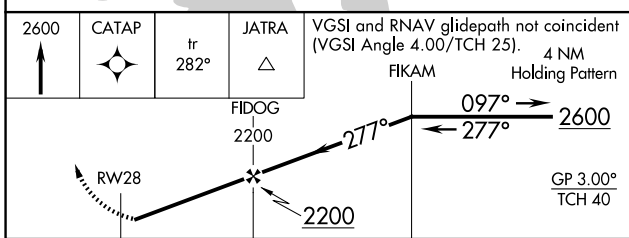
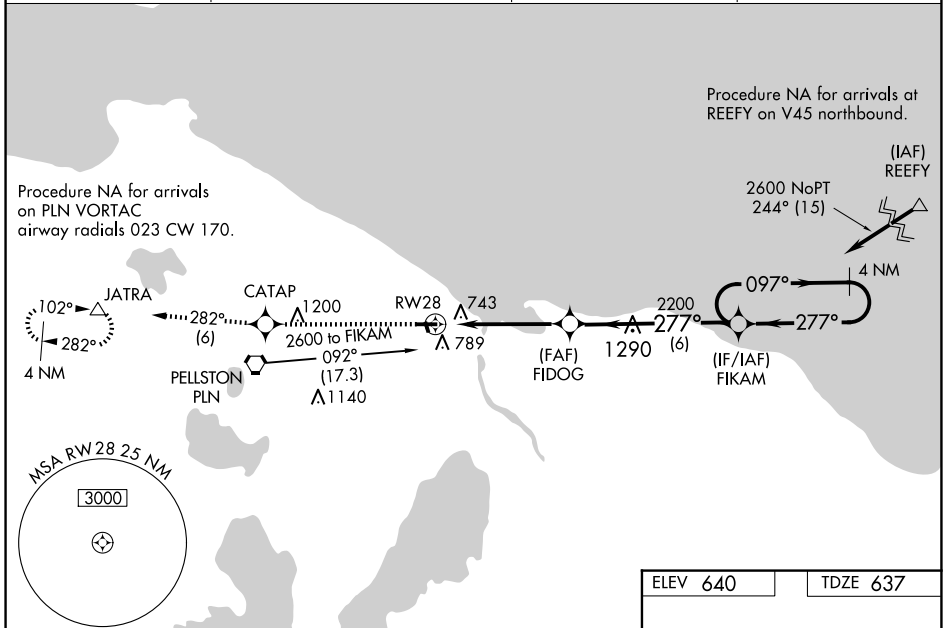
CHEBOYGAN COUNTY (SLH)

RNP APCH.

▼ Night landing Rwy 17, 35 NA. Baro-VNAV NA when using Pellston altimeter setting. For uncompensated Baro-VNAV systems, LNAV/VNAV NA below -16°C (4°F) or above 54°C (130°F). Helicopter visibility reduction below 3/4 SM NA. When local altimeter setting not received, use Pellston altimeter setting; increase all DA 41 feet and all MDA 60 feet and increase LNAV/VNAV all Cats visibility 1/4 SM and LNAV Cat C visibility 1/8 SM.

MISSED APPROACH: Climb to 2600 direct CATAP and on track 282° to JATRA and hold.

AWOS-3 118.175	MINNEAPOLIS CENTER 134.6 354.05	UNICOM 122.8 (CTAF)	122.5 Ⓛ
--------------------------	---	-------------------------------	-----------------------



CATEGORY	A	B	C	D
LPV DA		887-1 250 (300-1)		NA
LNAV/VNAV DA		953-1 316 (400-1)		NA
LNAV MDA	1060-1 423 (500-1)		1060-1 1/4 423 (500-1 1/4)	NA
C CIRCLING	1140-1 500 (500-1)		1140-1 1/2 500 (500-1 1/2)	NA

EC-1, 15 MAY 2025 to 12 JUN 2025

EC-1, 15 MAY 2025 to 12 JUN 2025