

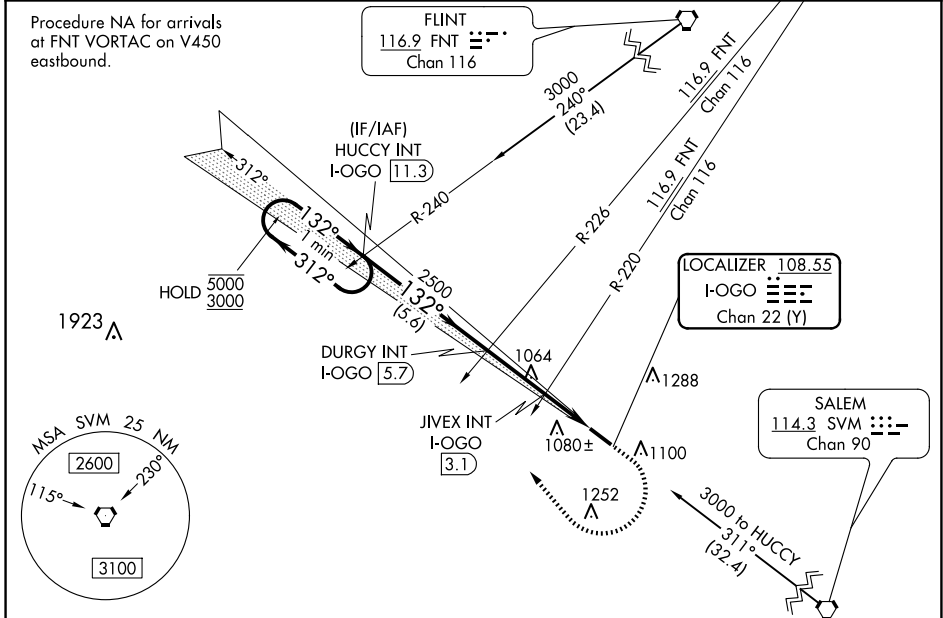
LOC/DME I-OGO <b>108.55</b> Chan <b>22 (Y)</b>	APP CRS <b>132°</b>	Rwy ldg <b>5002</b> TDZE <b>962</b> Apt Elev <b>962</b>
--	------------------------	---

# ILS or LOC RWY 13

LIVINGSTON COUNTY SPENCER J HARDY (OZW)

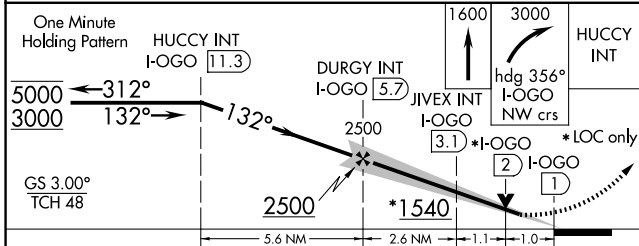
<p><b>▼</b> For inop ALS, increase LOC Cat C and D visibility to 1½ SM, and JIVEX fix minimums S-13 Cat C and D visibility to 1 SM.</p> <p><b>▲</b> NA</p>	<p>MALSRL</p>	<p>MISSED APPROACH: Climb to 1600 then climbing right turn to 3000 heading 356° and I-OGO NW course to HUCCY INT/ I-OGO 11.3 DME and hold.</p>
--	---------------	--

AWOS-3 <b>118.875</b>	DETROIT APP CON <b>132.35 284.0</b>	CLNC DEL <b>121.725 (GCO)</b>	UNICOM <b>123.0 (CTAF) 0</b>
--------------------------	--	----------------------------------	---------------------------------



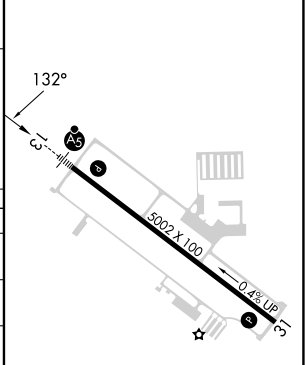
EC-1, 15 MAY 2025 to 12 JUN 2025

EC-1, 15 MAY 2025 to 12 JUN 2025



ELEV 962	TDZE 962
----------	----------

CATEGORY	A	B	C	D
S-ILS 13	1162-½		200 (200-½)	
S-LOC 13	1540-½ 578 (600-½)		1540-1¼ 578 (600-1¼)	
CIRCLING	1540-1 578 (600-1)		1600-1¾ 638 (700-1¾) 1600-2 638 (700-2)	
JIVEX FIX MINIMUMS (DUAL VOR RECEIVERS OR DME REQUIRED)				
S-LOC 13	1320-½ 358 (400-½)		1320-⅝ 358 (400-⅝)	
CIRCLING	1400-1 438 (500-1) 1420-1 458 (500-1)		1600-1¾ 638 (700-1¾) 1600-2 638 (700-2)	



HIRL Rwy 13-31 0	REIL Rwy 31 0
FAF to MAP 4.7 NM	
Knots	60 90 120 150 180
Min:Sec	4:42 3:08 2:21 1:53 1:34

# ILS or LOC RWY 13