

WAAS CH <b>77534</b> <b>W10A</b>	APP CRS <b>100°</b>	Rwy Idg TDZE Apt Elev	<b>5000</b> <b>1172</b> <b>1184</b>
--	------------------------	-----------------------------	---

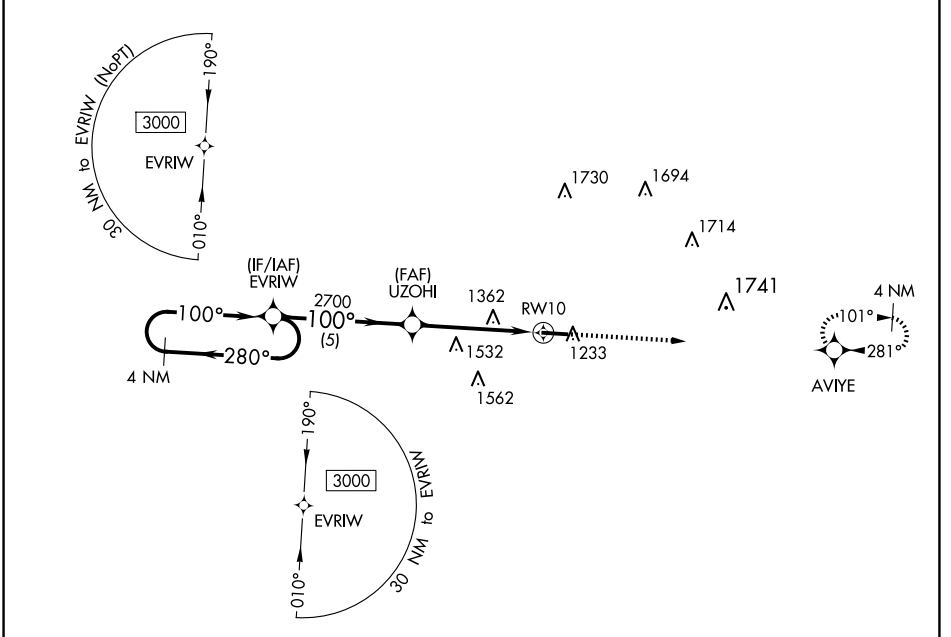
# RNAV (GPS) RWY 10

HILLSDALE MUNI (JYM)

**▽** For uncompensated Baro-VNAV systems, LNAV/VNAV NA below -17°C (2°F) or above 54°C (130°F). DME/DME RNP-0.3 NA.

MISSED APPROACH: Climb to 3100 direct AVIYE and hold.

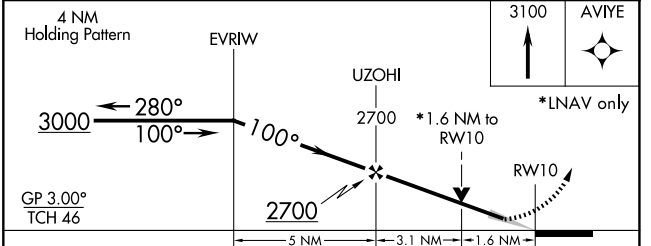
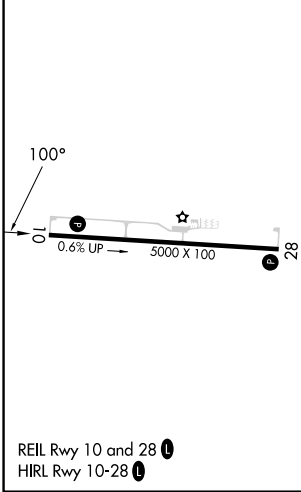
AWOS-3 <b>121.025</b>	TOLEDO APP CON <b>134.35 317.55</b>	UNICOM <b>122.8 (CTAF) 0</b>
--------------------------	--	---------------------------------



EC-1, 15 MAY 2025 to 12 JUN 2025

EC-1, 15 MAY 2025 to 12 JUN 2025

ELEV 1184	TDZE 1172
-----------	-----------



CATEGORY	A	B	C	D
LPV DA	1441-1	269 (300-1)		NA
LNAV/VNAV DA	1601-1½	429 (500-1½)		NA
LNAV MDA	1720-1	548 (600-1)	1720-1⅝ 548 (600-1⅝)	NA
<b>C</b> CIRCLING	1720-1	536 (600-1)	1720-1⅝ 536 (600-1⅝)	NA