

WAAS CH <b>86527</b> <b>W14A</b>	APP CRS <b>140°</b>	Rwy Idg TDZE Apt Elev	<b>4000</b> <b>996</b> <b>1001</b>
--	------------------------	-----------------------------	--

# RNAV (GPS) RWY 14

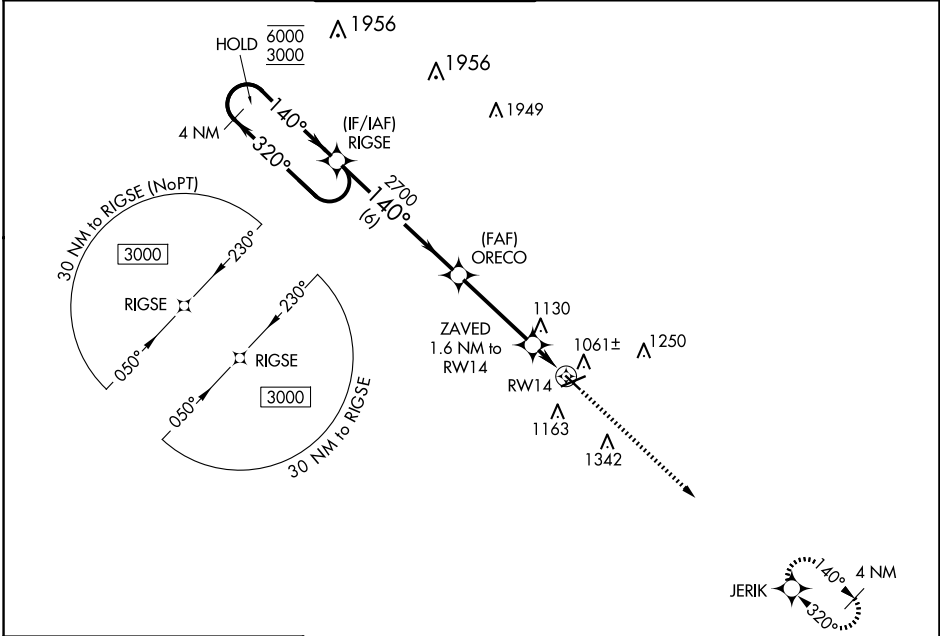
JACKSON COUNTY/REYNOLDS FLD (JXN)

RNP APCH - GPS.

**▼** Rwy 14 helicopter visibility reduction below 3/4 SM NA. For uncompensated Baro-VNAV systems, LNAV/VNAV NA below -23°C or above 54°C.

MISSED APPROACH: Climb to 3000 direct JERIK and hold.

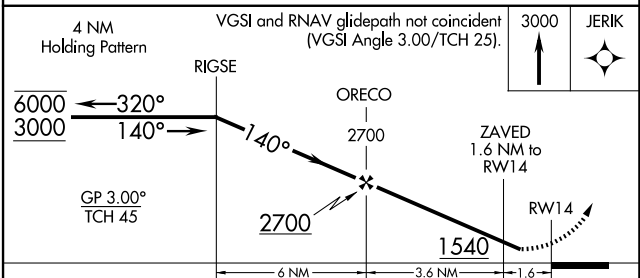
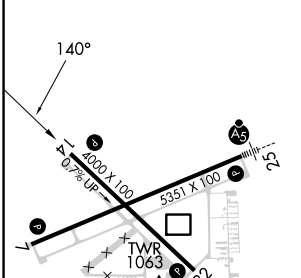
ATIS <b>125.725</b>	GREAT LAKES APP CON * <b>127.3 335.575</b>	JACKSON TOWER * <b>128.475 (CTAF) 257.8</b>	GND CON <b>121.9</b>	CLNC DEL <b>121.9</b>	UNICOM <b>122.95</b>
------------------------	---	--	-------------------------	--------------------------	-------------------------



EC-1, 15 MAY 2025 to 12 JUN 2025

EC-1, 15 MAY 2025 to 12 JUN 2025

ELEV 1001	TDZE 996
-----------	----------



CATEGORY	A	B	C	D
LPV DA		1345-1	349 (400-1)	
LNAV/VNAV DA		1463-1 3/8	467 (500-1 3/8)	
LNAV MDA	1380-1	384 (400-1)	1380-1 1/8	384 (400-1 1/8)
<b>C</b> CIRCLING	1480-1	479 (500-1)	1660-1 3/4 659 (700-1 3/4)	1660-2 659 (700-2)

HIRL Rwy 7-25  
MIRL Rwy 14-32  
REL Rwy 7 and 32