

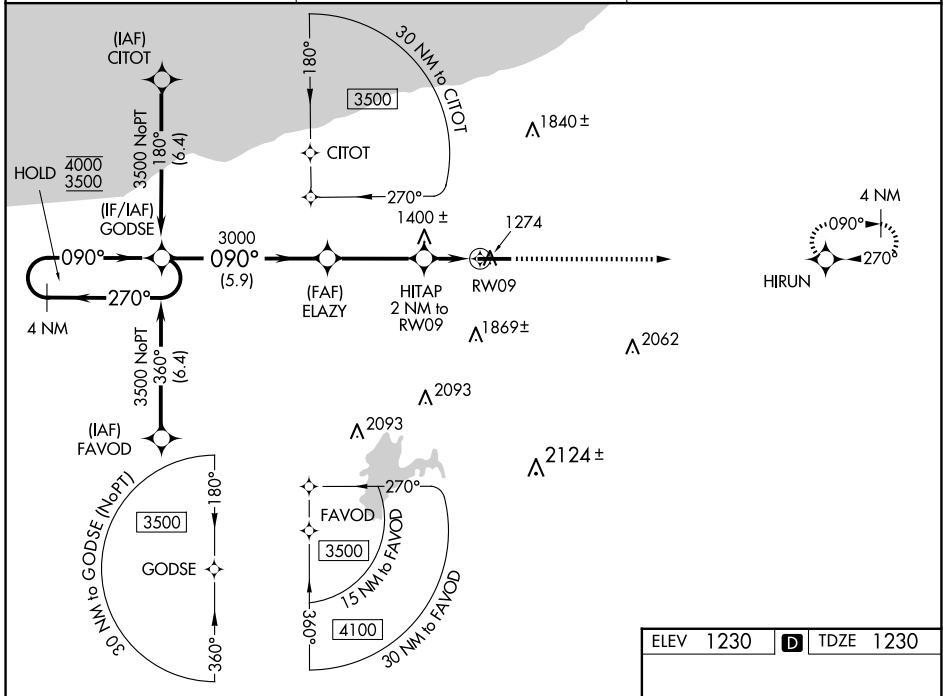
WAAS CH <b>86747</b> <b>W09A</b>	APP CRS <b>090°</b>	Rwy ldg TDZE Apt Elev	<b>6501</b> <b>1230</b> <b>1230</b>
--	------------------------	-----------------------------	---

# RNAV (GPS) RWY 9

GOGEBIC/IRON COUNTY (IWD)

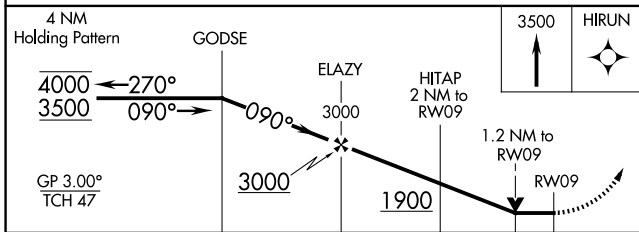
RNP APCH - GPS	Rwy 9 helicopter visibility reduction below 3/4 SM NA. For uncompensated Baro-VNAV systems, LNAV/VNAV NA below -17°C or above 54°C.	MISSED APPROACH: Climb to 3500 direct HIRUN and hold.
----------------	---	--

AWOS-3PT <b>125.175</b>	MINNEAPOLIS CENTER <b>133.55</b>	UNICOM <b>122.8 (CTAF)</b>
----------------------------	-------------------------------------	-------------------------------



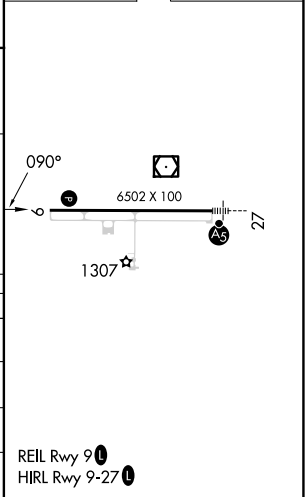
EC-1, 15 MAY 2025 to 12 JUN 2025

EC-1, 15 MAY 2025 to 12 JUN 2025



ELEV 1230	<b>D</b> TDZE 1230
-----------	--------------------

CATEGORY	A	B	C	D
LPV DA		1480-3/4	250 (300-3/4)	
LNAV/VNAV DA		1630-1 1/8	400 (400-1 1/8)	
LNAV MDA	1660-1	430 (500-1)	1660-1 1/4	430 (500-1 1/4)
CIRCLING	2100-1 1/4	870 (900-1 1/4)	2200-3 970 (1000-3)	2220-3 990 (1000-3)



REIL Rwy 9 **D**  
HIRL Rwy 9-27 **D**