

| | | | |
|--|------------------------|-----------------------------|---|
| WAAS CH 72912 W24A | APP CRS 246° | Rwy Idg TDZE Apt Elev | 3801 635 635 |
|--|------------------------|-----------------------------|---|

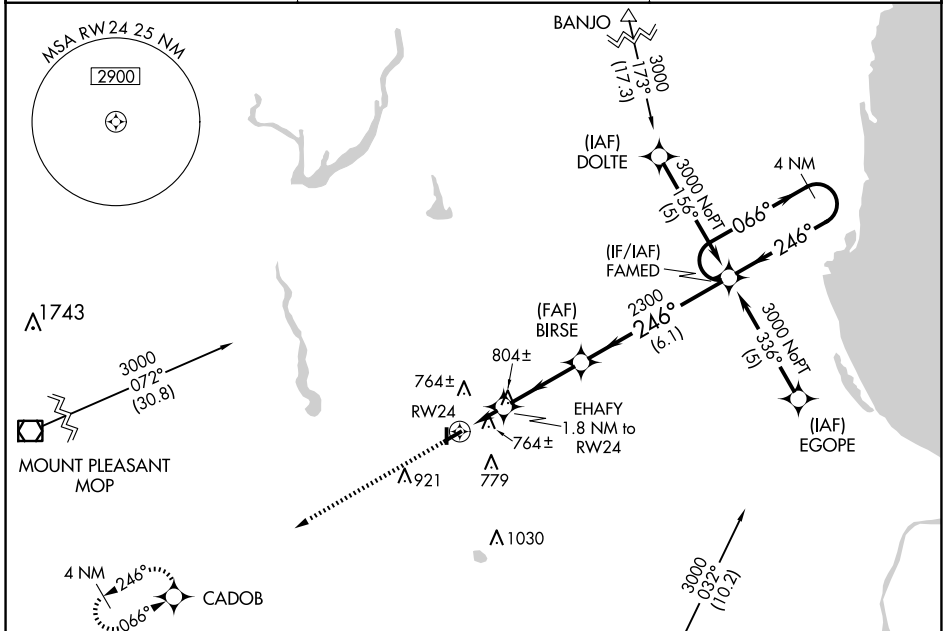
RNAV (GPS) RWY 24

JACK BARSTOW (IKW)

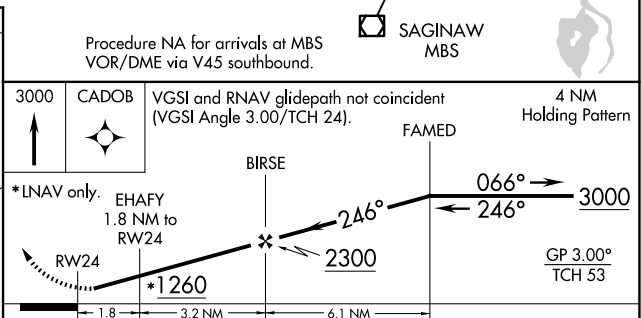
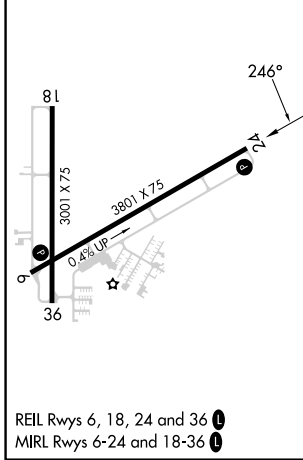
⚠ Baro-VNAV NA when using MBS Intl altimeter setting. For uncompensated Baro-VNAV systems, LNAV/VNAV NA below -16°C (4°F) or above 54°C (130°F). DME/DME RNP-0.3 NA. Rwy 24 helicopter visibility reduction below 3/4 SM NA. When local altimeter setting not received, use MBS Intl altimeter setting and increase all DA 31 feet and all MDA 40 feet and all LPV visibility 1/4 mile. Circling Rwy 18, 36 NA at night.

MISSED APPROACH:
Climb to 3000 direct CADOB and hold.

| | | |
|--------------------------|--|---------------------------------|
| AWOS-3 119.525 | GREAT LAKES APP CON ★ 126.45 235.625 | UNICOM 122.8 (CTAF) 0 |
|--------------------------|--|---------------------------------|



| | |
|-----------------|-----------------|
| ELEV 635 | TDZE 635 |
|-----------------|-----------------|



| CATEGORY | A | B | C | D |
|--------------|---------|--------------|-------------------------|----|
| LPV DA | 1021-1¼ | 386 (400-1¼) | | NA |
| LNAV/VNAV DA | 1068-1½ | 433 (500-1½) | | NA |
| LNAV MDA | 1060-1 | 425 (500-1) | 1060-1¼ 425 (500-1¼) | NA |
| CIRCLING | 1120-1 | 485 (500-1) | 1240-1¾ 605 (700-1¾) | NA |

EC-1, 15 MAY 2025 to 12 JUN 2025

EC-1, 15 MAY 2025 to 12 JUN 2025