

VOR CGG 109.8	APP CRS 128°	Rwy Idg TDZE Apt Elev	5005 1154 1158
-------------------------	------------------------	-----------------------------	---

VOR RWY 14

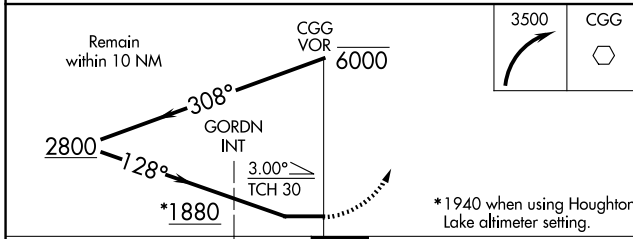
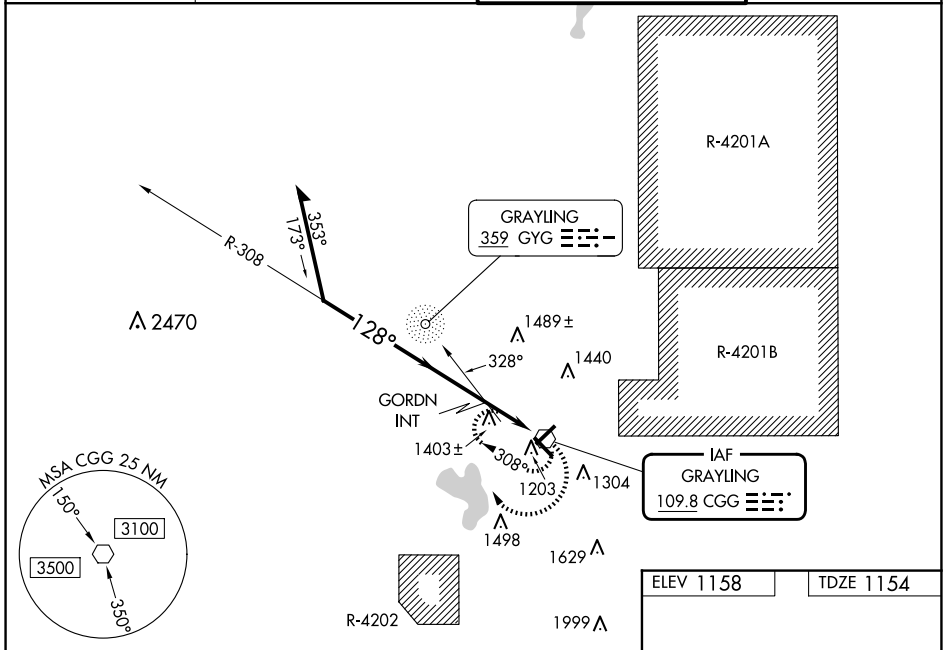
GRAYLING AAF (GOV)

RADAR required for procedure entry.

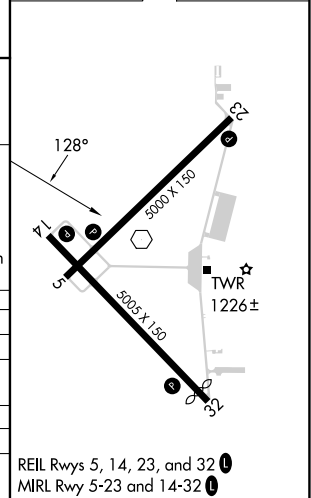
▼ Circling Rwy 5, 23, 32 NA at night. Rwy 14 helicopter visibility reduction below $\frac{3}{4}$ SM NA.
 When local altimeter setting not received, use Houghton Lake altimeter setting: increase all MDAs 60 feet and S-14 visibility Cat B $\frac{1}{4}$ SM, Cats C and D $\frac{1}{2}$ SM and Circling Cat B $\frac{1}{4}$ SM, Cat C $\frac{1}{2}$ SM, Cat D $\frac{1}{4}$ SM and GORDN fix minimums: S-14 Cats C and D $\frac{1}{4}$ SM and Circling Cat C and D visibility $\frac{1}{4}$ SM.

▲ NA MISSED APPROACH: Climbing right turn to 3500 in CGG VOR holding pattern.

ATIS 119.075	MINNEAPOLIS CENTER 125.475 269.45	GRAYLING TOWER ★ 126.2 (CTAF) 0	GND CON 121.9
------------------------	---	---	-------------------------



ELEV 1158	TDZE 1154
-----------	-----------



CATEGORY	A	B	C	D
S-14	1880-1	726 (800-1)	1880-2	726 (800-2)
CIRCLING	1880-1	722 (800-1)	1880-2	1960-2 $\frac{1}{2}$ 802 (900-2 $\frac{1}{2}$)
GORDN FIX MINIMUMS (ADF REQUIRED)				
S-14	1660-1	506 (600-1)	1660-1 $\frac{3}{8}$	506 (600-1 $\frac{3}{8}$)
CIRCLING	1660-1 502 (600-1)	1720-1 562 (600-1)	1800-1 $\frac{3}{4}$ 642 (700-1 $\frac{3}{4}$)	1960-2 $\frac{1}{2}$ 802 (900-2 $\frac{1}{2}$)

REIL Rwy 5, 14, 23, and 32 ●
 MIRL Rwy 5-23 and 14-32 ●

EC-1, 15 MAY 2025 to 12 JUN 2025

EC-1, 15 MAY 2025 to 12 JUN 2025