

LOC/DME I-JKI 111.95	APP CRS 216°	Rwy Idg 10000
Chan 56 (Y)		TDZE 642
		Apt Elev 645

ILS Z or LOC RWY 22R

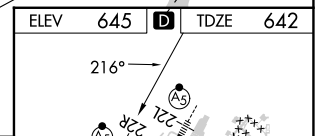
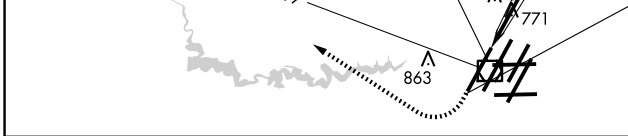
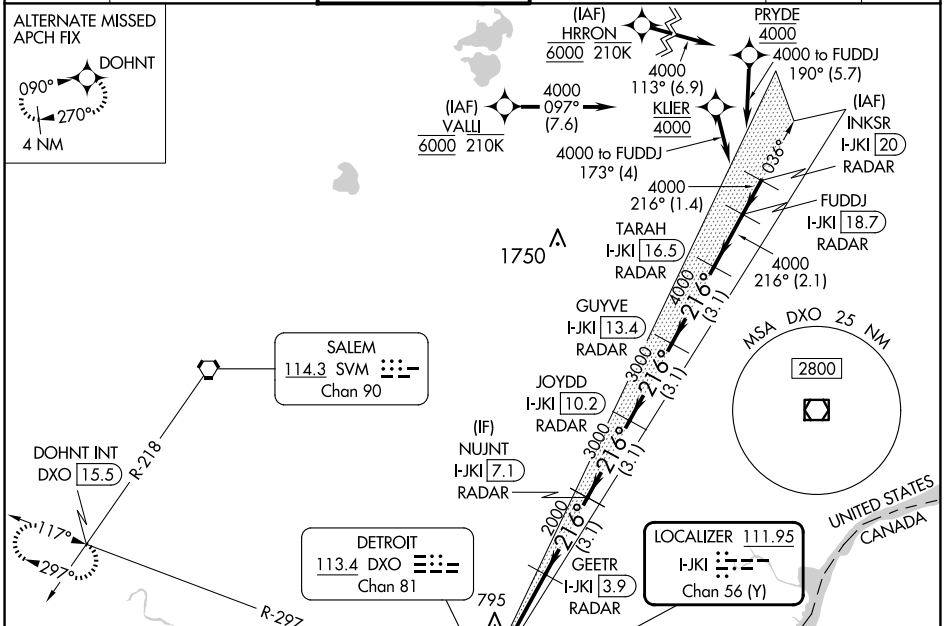
DETROIT METRO WAYNE COUNTY (DTW)

RNAV 1-GPS. HRRON and VALLI: RNAV 1-DME/DME/IRU or GPS required.
 Aircraft not DME/DME/IRU or GPS equipped - RADAR required for procedure entry.

MALSR MISSED APPROACH: Climb to 1100 then climbing right turn to 4000 on DXO VOR/DME R-297 to DOHNT INT/DXO 15.5 DME and hold.

Simultaneous approach authorized.
 **RVR 1800 authorized with use of FD or AP or HUD to DA.

D-ATIS 133.675	DETROIT APP CON 124.05 284.0	METRO TOWER 135.0 317.725	GND CON 121.8 (NW) 119.45 (NE) 132.75 (SW) 119.25 (SE)	CLNC DEL 120.65	CPDLC
--------------------------	--	-------------------------------------	--	---------------------------	-------



ELEV 645	TDZE 642	VGS1 and ILS glidepath not coincident (VGS1 Angle 3.00/TCH 71).			
DXO R-297	DOHNT INT	JOYDD I-JKI 10.2 RADAR	GUYVE I-JKI 13.4 RADAR	TARAH I-JKI 16.5 RADAR	FUDDJ I-JKI 18.7 RADAR
*LOC only.					
GEETR I-JKI 3.9 RADAR	NUJNT I-JKI 7.1 RADAR				
I-JKI DME ANTENNA I-JKI 0.2	I-JKI 0.9				
11056	1.1 NM	3 NM	3.1 NM	3.1 NM	2.1 NM
CATEGORY	A	B	C	D	
S-ILS 22R**	842/24		200 (200-1/2)		
S-LOC 22R	1060/24	418 (500-1/2)	1060/40	418 (500-3/4)	
☐ CIRCLING	1180-1	535 (600-1)	1180-1 1/2	1240-2	
			535 (600-1 1/2)	595 (600-2)	
TDZ/CL Rwy's 3R, 4L, 4R and 22R REIL Rwy's 3L, 9L, 9R and 21R HIRL all Rwy's					
FAF to MAP 4.1 NM					
Knots	60	90	120	150	180
Min:Sec	4:06	2:44	2:03	1:38	1:22

EC-1, 15 MAY 2025 to 12 JUN 2025

EC-1, 15 MAY 2025 to 12 JUN 2025