

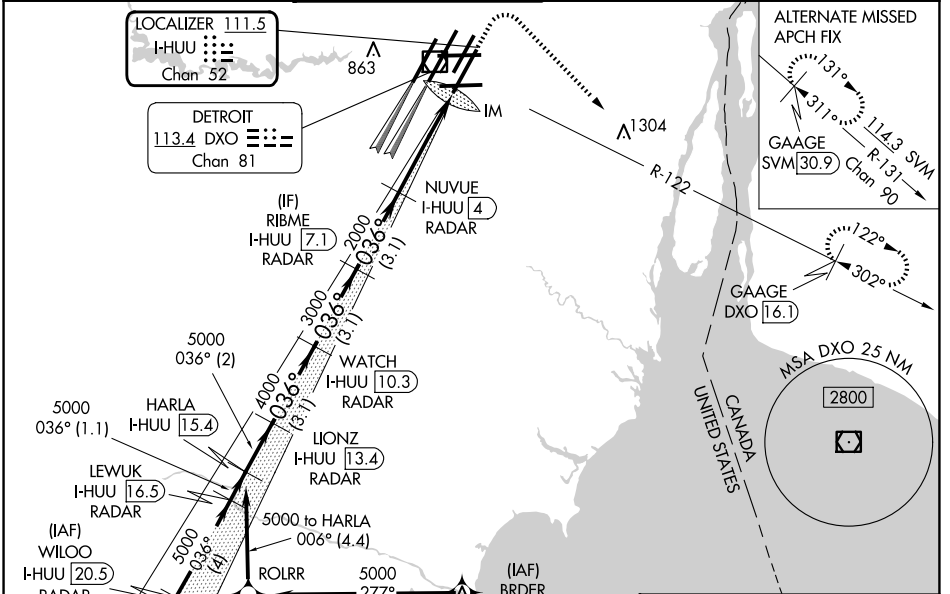
LOC/DME I-HUU <b>111.5</b> Chan <b>52</b>	APP CRS <b>036°</b>	Rwy ldg <b>10001</b> TDZE <b>633</b> Apt Elev <b>645</b>
---	------------------------	--

# ILS RWY 3R (SA CAT I)

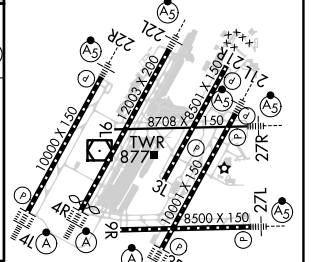
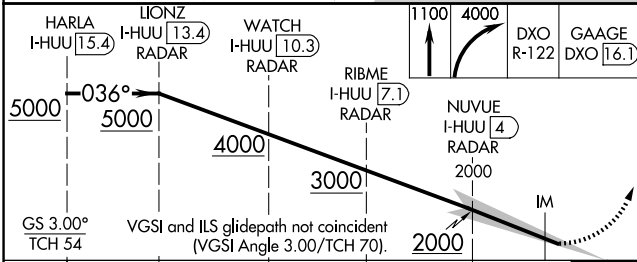
DETROIT METRO WAYNE COUNTY (DTW)

RNAV 1-GPS.	MERCA and BRDER: RNAV 1-DME/DME/IRU or GPS required. Aircraft not DME/DME/IRU or GPS equipped - RADAR required for procedure entry.	ALSF-2 	MISSED APPROACH: Climb to 1100 then climbing right turn to 4000 on DXO VOR/DME R-122 to GAAGE/DXO 16.1 DME and hold.
<p>Simultaneous approach authorized. DME required. Requires specific OPSPEC, MSPEC, or LOA approval and use of HUD to DH.</p>			

D-ATIS <b>133.675</b>	DETROIT APP CON <b>125.15 284.0</b>	METRO TOWER <b>118.4 317.725</b>	GND CON <b>121.8 (NW) 119.45 (NE)</b> <b>132.725 (SW) 119.25 (SE)</b>	CLNC DEL <b>120.65</b>	CPDLC
--------------------------	--	-------------------------------------	---	---------------------------	-------



ELEV 645	<b>D</b> TDZE 633
HIRL all runways	
REIL Rwy 3L, 9L, 9R and 21R	
TDZ/CL Rwy 3R, 4L, 4R and 22R	



2 NM	3.1 NM	3.1 NM	3.1 NM	4.1 NM	10301
CATEGORY	A	B	C	D	
S-ILS 3R	RA 153/14		150 DA 783		

## SA CATEGORY I ILS - SPECIAL AIRCREW & AIRCRAFT CERTIFICATION REQUIRED

EC-1, 15 MAY 2025 to 12 JUN 2025

EC-1, 15 MAY 2025 to 12 JUN 2025