


LOC I-DMI 108.5	APP CRS 276°	Rwy ldg TDZE Apt Elev	8708 635 645
---------------------------	------------------------	-----------------------------	---

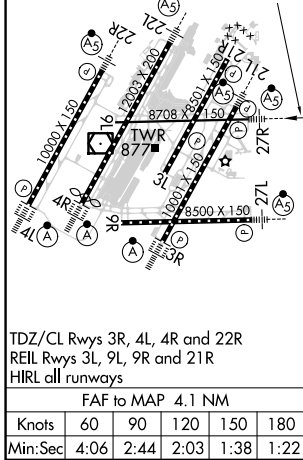
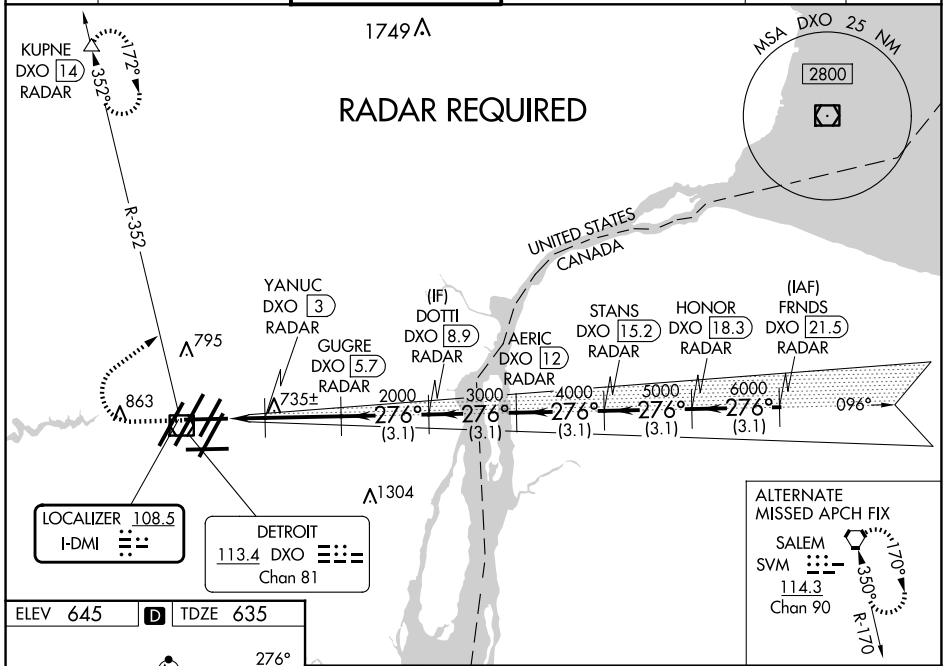
ILS or LOC RWY 27R



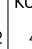
DETROIT METRO WAYNE COUNTY (DTW)

▽ DME or RADAR required. Simultaneous approach authorized. DME from DXO VOR/DME. Simultaneous reception of I-DMI and DXO DME required. For inop ALS, increase S-LOC 27R Cats C and D visibility to RVR 5500.
**** RVR 1800 authorized with use of FD or AP or HUD to DA.**

MALS

MISSED APPROACH: Climb to 1100 then climbing right turn to 4000 on DXO VOR/DME R-352 to KUPNE/DXO 14 DME/RADAR and hold, continue climb-in-hold to 4000.

D-ATIS 133.675	DETROIT APP CON 125.15 284.0	METRO TOWER 118.4 317.725	GND CON 121.8 (NW) 119.45 (NE) 132.725 (SW) 119.25 (SE)	CLNC DEL 120.65	CPDLC
--------------------------	--	-------------------------------------	---	---------------------------	-------



1100	4000	KUPNE	VGSI and ILS glidepath not coincident (VGSI Angle 3.00/TCH 61).	
				
*LOC only.				
			HONOR DXO 18.3 RADAR	
			FRNDS DXO 21.5 RADAR	
			STANS DXO 15.2 RADAR	
			AERIC DXO 12 RADAR	
			DOTI DXO 8.9 RADAR	
			GUGRE DXO 5.7 RADAR	
			YANUC DXO 3 RADAR	
			DXO 1.6 RADAR	
			2000	
			3000	
			4000	
			5000	
			6000	
			7000	
			GS 3.00° TCH 50	
			1.4 NM - 2.7 NM - 3.1 NM - 3.1 NM - 3.1 NM - 3.1 NM - 3.1 NM	
CATEGORY	A	B	C	D
S-ILS 27R	** 835/24 200 (200-½)			
S-LOC 27R	1000/24	365 (400-½)	1000/35	365 (400-¾)
<input checked="" type="checkbox"/> CIRCLING	1180-1	535 (600-1)	1180-1½	1240-2
			535 (600-½)	595 (600-2)

EC-1, 15 MAY 2025 to 12 JUN 2025

EC-1, 15 MAY 2025 to 12 JUN 2025