

| | | | |
|---|------------------------|-----------------------------|--|
| LOC/DME I-EJR 111.5 Chan 52 | APP CRS 216° | Rwy Idg TDZE Apt Elev | 10001 632 645 |
|---|------------------------|-----------------------------|--|

ILS or LOC RWY 21L

DETROIT METRO WAYNE COUNTY (DTW)

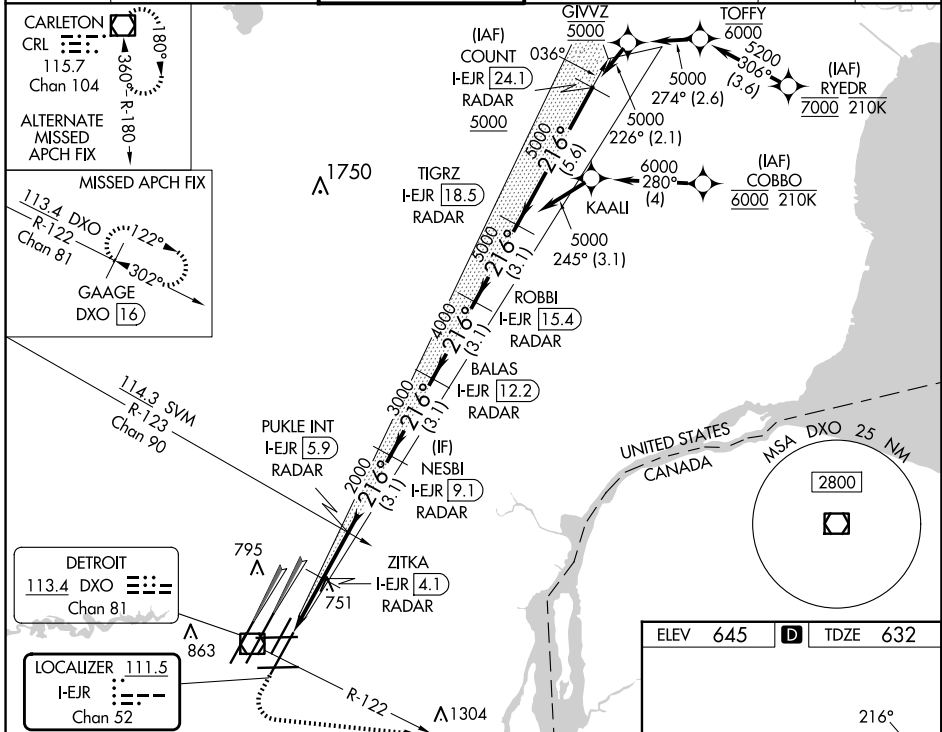
From RYEDR, COBBO: RNAV 1-DME/DME/IRU or GPS required. Aircraft not DME/DME/IRU or GPS equipped - RADAR required for procedure entry. DME or RADAR required.



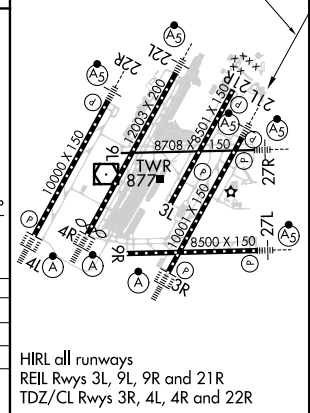
MISSED APPROACH: Climb to 1100 then climbing left turn to 4000 on DXO R-122 to GAAGE/DXO 16 DME and hold, continue climb-in-hold to 4000.

Simultaneous approach authorized. **RVR 1800 authorized with use of FD or AP or HUD to DA.

| | | | | | |
|--------------------------|--|-------------------------------------|---|---------------------------|-------|
| D-ATIS 133.675 | DETROIT APP CON 125.15 284.0 | METRO TOWER 118.4 317.725 | GND CON 121.8 (NW) 119.45 (NE) 132.725 (SW) 119.25 (SE) | CLNC DEL 120.65 | CPDLC |
|--------------------------|--|-------------------------------------|---|---------------------------|-------|



| | |
|---|--|
| ELEV 645 | TDZE 632 |
| 1100 | 4000 |
| DXO R-122 | GAAGE DXO 16 |
| VGSI and ILS glidepath not coincident (VGSI Angle 3.00/TCH 80). | |
| *LOC only | ZITKA I-EJR 4.1 RADAR |
| I-EJR 1.8 | PUKLE INT I-EJR 5.9 RADAR |
| | NESBI I-EJR 9.1 RADAR |
| | BALAS I-EJR 12.2 RADAR |
| | ROBBI I-EJR 15.4 RADAR |
| | TIGRZ I-EJR 18.5 RADAR |
| | 5000 |
| | GS 3.00° TCH 55 |
| 1 NM | 1.3 NM |
| 1.8 NM | 3.1 NM |
| 3.1 NM | 3.1 NM |
| 3.1 NM | 3.1 NM |
| 3.1 NM | 3.1 NM |
| 3.1 NM | 3.1 NM |
| 3.1 NM | 3.1 NM |
| CATEGORY | A B C D |
| S-ILS 21L ** | 832/24 200 (200-½) |
| S-LOC 21L | 1020/24 388 (400-½) 1020/35 388 (400-¾) |
| CIRCLING | 1180-1 535 (600-1) 1180-1½ 535 (600-1½) 1240-2 595 (600-2) |



HIRL all runways
REIL Rwy's 3L, 9L, 9R and 21R
TDZ/CL Rwy's 3R, 4L, 4R and 22R

EC-1, 15 MAY 2025 to 12 JUN 2025

EC-1, 15 MAY 2025 to 12 JUN 2025