

WAAS CH <b>58211</b> <b>W33A</b>	APP CRS <b>328°</b>	Rwy Idg TDZE Apt Elev	<b>5092</b> <b>624</b> <b>624</b>
--	------------------------	-----------------------------	---

# RNAV (GPS) RWY 33

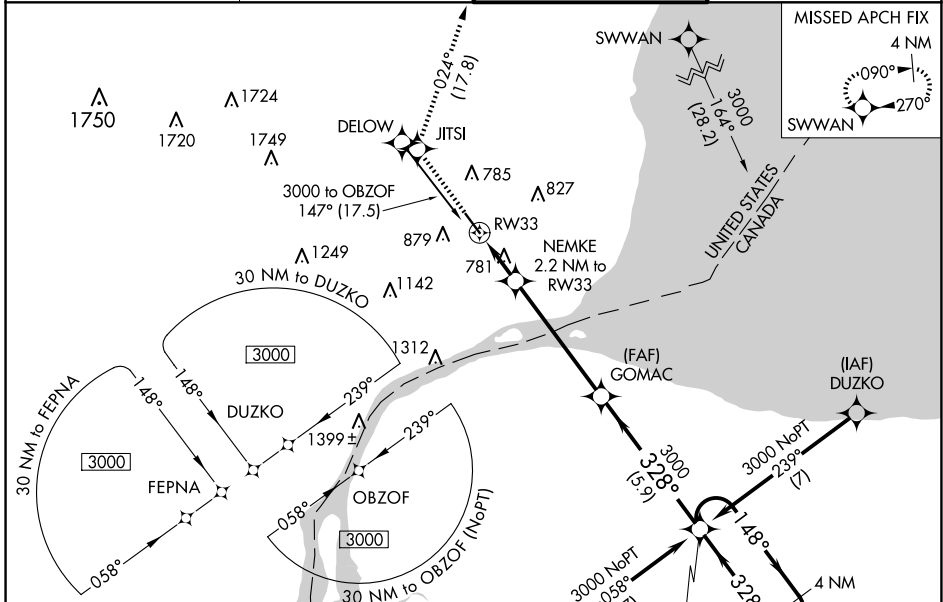
COLEMAN A YOUNG MUNI (DET)

RNP APCH - GPS.

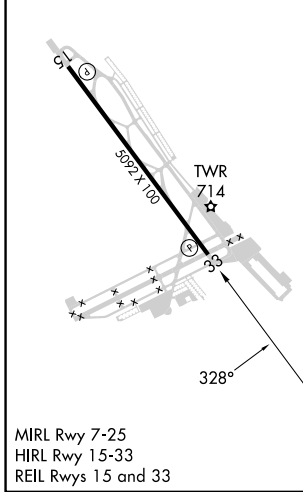
**▼** Rwy 33 helicopter visibility reduction below 3/4 SM NA. For uncompensated Baro-VNAV systems, LNAV/VNAV NA below -17°C or above 54°C. Baro-VNAV and VDP NA when using DTW altimeter setting.

**▲** MISSED APPROACH: Climb to 4000 direct JTSI and on track 024° to SWWAN and hold.

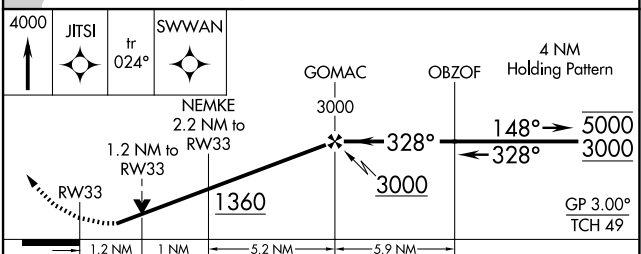
ATIS <b>124.875</b>	DETROIT APP CON <b>134.3 284.0</b>	DETROIT CITY TOWER <b>121.3 257.8</b>	GND CON <b>121.85</b>
------------------------	---------------------------------------	--	--------------------------



ELEV <b>624</b>	TDZE <b>624</b>
-----------------	-----------------



MIRL Rwy 7-25  
HIRL Rwy 15-33  
REL Rwy 15 and 33



CATEGORY	A	B	C	D
LPV DA		874-3/4	250 (300-3/4)	
LNAV/VNAV DA		1039-1 1/8	415 (500-1 1/8)	
LNAV MDA	1040-1	416 (500-1)	1040-1 1/8	416 (500-1 1/8)
<b>C</b> CIRCLING	1180-1	556 (600-1)	1320-2 696 (700-2)	1500-2 3/4 876 (900-2 3/4)

EC-1, 15 MAY 2025 to 12 JUN 2025

EC-1, 15 MAY 2025 to 12 JUN 2025