

LOC I-CIU <b>110.3</b>	APP CRS <b>157°</b>	Rwy Idg <b>7203</b>
		TDZE <b>799</b>
		Apt Elev <b>799</b>

# ILS or LOC RWY 16

CHIPPEWA COUNTY INTL (CIU)

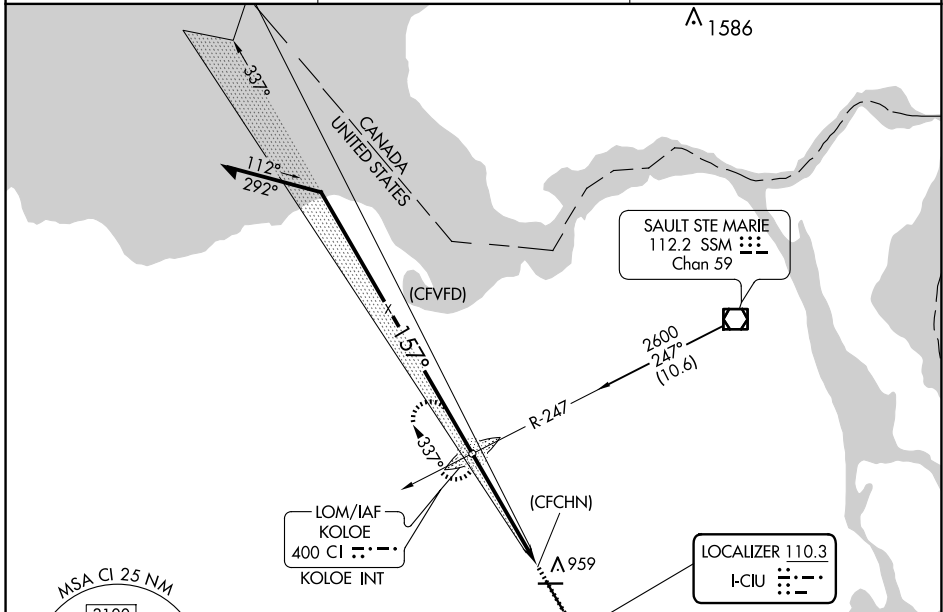
ADF required.

**▲** Autopilot coupled approach NA below 1380.  
**▲NA** For inop ALS, increase S-ILS 16 visibility to 7/8 SM all Cats and S-LOC 16 Cat C/D/E to 1 SM.

MALSR **A5**

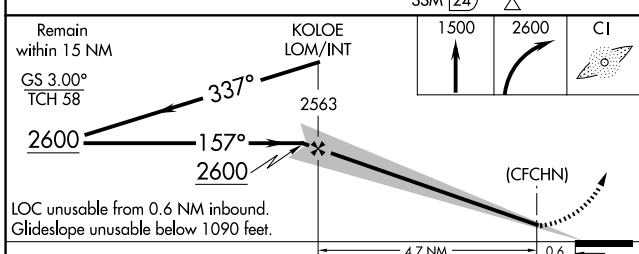
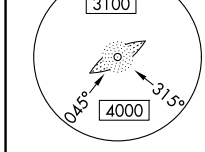
MISSED APPROACH: Climb to 1500 then climbing right turn to 2600 direct KOLOE LOM/INT and hold, continue climb-in-hold to 2600.

AWOS-3PT <b>127.575</b>	TORONTO CENTER <b>132.65 344.5</b>	UNICOM <b>123.0 (CTAF) 0</b>
----------------------------	---------------------------------------	---------------------------------



EC-1, 15 MAY 2025 to 12 JUN 2025

EC-1, 15 MAY 2025 to 12 JUN 2025



CATEGORY	A	B	C	D	E
S-ILS 16	1090-1/2 291 (300-1/2)				
S-LOC 16	1160-1/2	361 (400-1/2)	1160-5/8	361 (400-5/8)	
<b>C</b> CIRCLING	1260-1	461 (500-1)	1260-1 1/2	1360-2	1380-2
			461 (500-1 1/2)	561 (600-2)	581 (600-2)

ELEV 799 **D** TDZE 799

REIL Rwy 10, 28 and 34 **0**  
 MRL Rwy 10-28 **0**  
 HIRL Rwy 16-34 **0**

FAF to MAP 4.7 NM

Knots	60	90	120	150	180
Min:Sec	4:42	3:08	2:21	1:53	1:34