

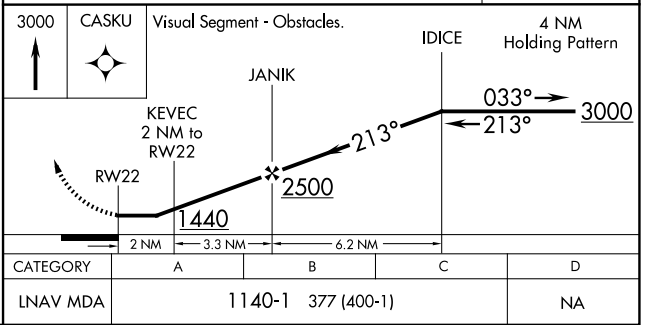
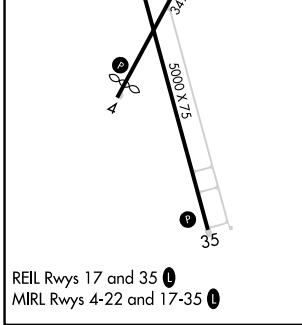
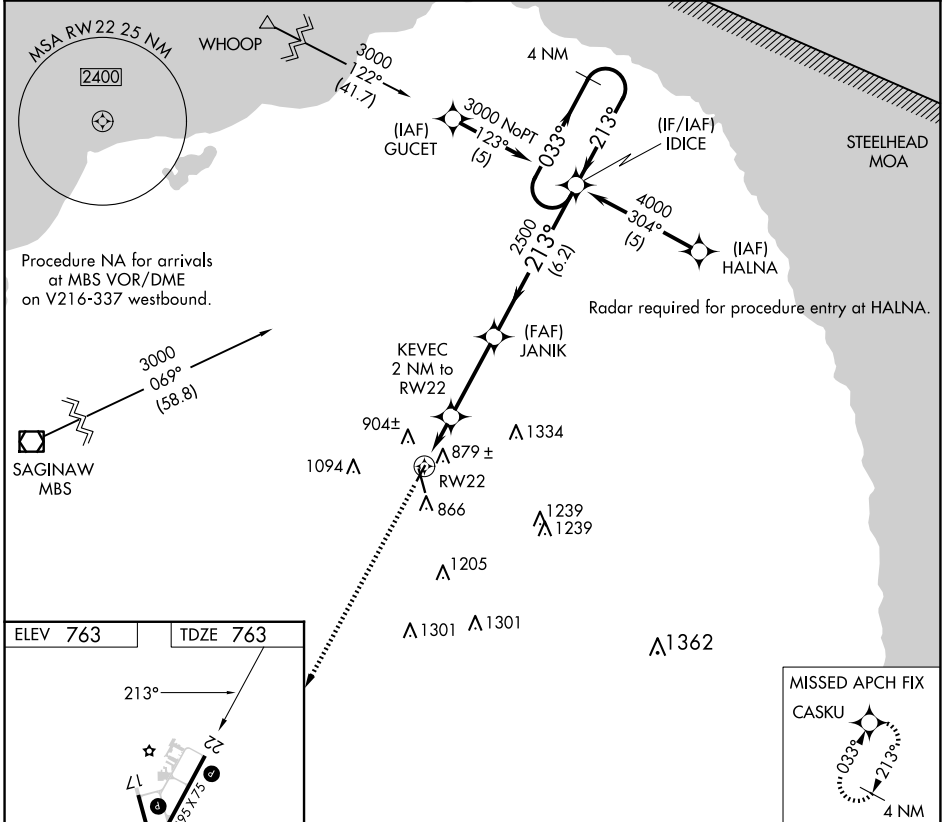
APP CRS <b>213°</b>	Rwy Idg <b>3495</b>
	TDZE <b>763</b>
	Apt Elev <b>763</b>

# RNAV (GPS) RWY 22

HURON COUNTY MEML (BAX)

RNP APCH.	MISSED APPROACH: Climb to 3000 direct CASKU and hold.
<p>▼ When local altimeter setting not received, use MBS Intl altimeter setting and increase all MDA 140 feet; increase LNAV Cat C visibility ½ SM. Procedure NA at night. Rwy 22 helicopter visibility reduction below 1 SM NA.</p>	

AWOS-3 <b>118.6</b>	CLEVELAND CENTER <b>127.7 290.425</b>	UNICOM <b>123.075 (CTAF) 0</b>
------------------------	--	-----------------------------------



EC-1, 15 MAY 2025 to 12 JUN 2025

EC-1, 15 MAY 2025 to 12 JUN 2025