

VOR/DME SSM	APP CRS	Rwy Idg TDZE	5056
112.2	337°	Apt Elev	716
Chan 59			

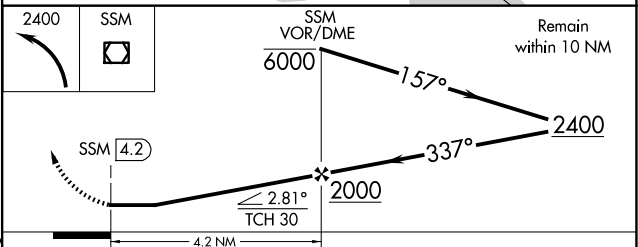
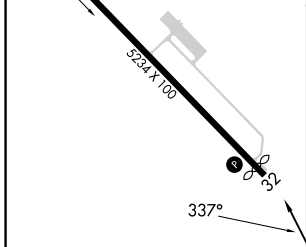
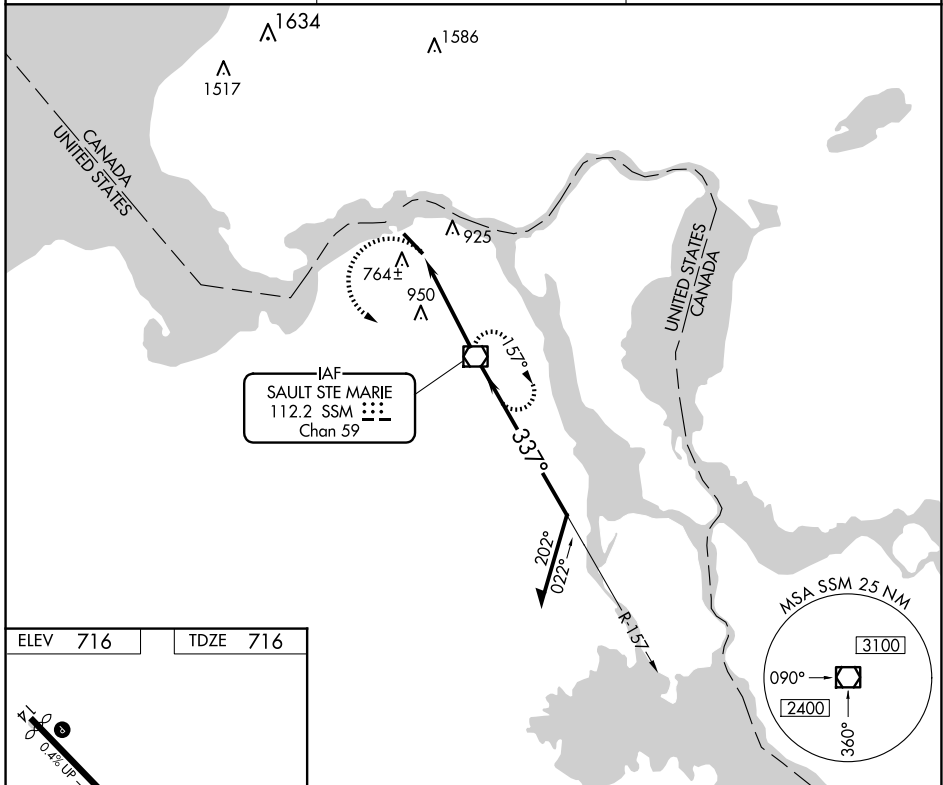
VOR RWY 32

SAULT STE MARIE MUNI/SANDERSON FLD (A.NJ)

⚠ When local altimeter setting not received, use Chippewa County Intl altimeter setting and increase all MDA 60 feet and increase S-32 Cat C visibility to 1¼ mile. Rwy 32 helicopter visibility reduction below ¾ SM NA.

MISSED APPROACH:
Climbing left turn to 2400
direct SSM VOR/DME and hold.

ASOS 118,375	TORONTO CENTER 132.65 344.5	UNICOM 122.7 (CTAF) 0
------------------------	---------------------------------------	---------------------------------



	A	B	C	D
S-32	1260-1 544 (600-1)		1260-1½ 544 (600-1½)	NA
CIRCLING	1280-1 564 (600-1)		1320-1¾ 604 (700-1¾)	NA

VOR RWY 32

EC-1, 15 MAY 2025 to 12 JUN 2025

EC-1, 15 MAY 2025 to 12 JUN 2025