

WAAS CH <b>70622</b> <b>W14A</b>	APP CRS <b>143°</b>	Rwy Idg TDZE Apt Elev	<b>5054</b> <b>712</b> <b>716</b>
--	------------------------	-----------------------------	---

# RNAV (GPS) RWY 14

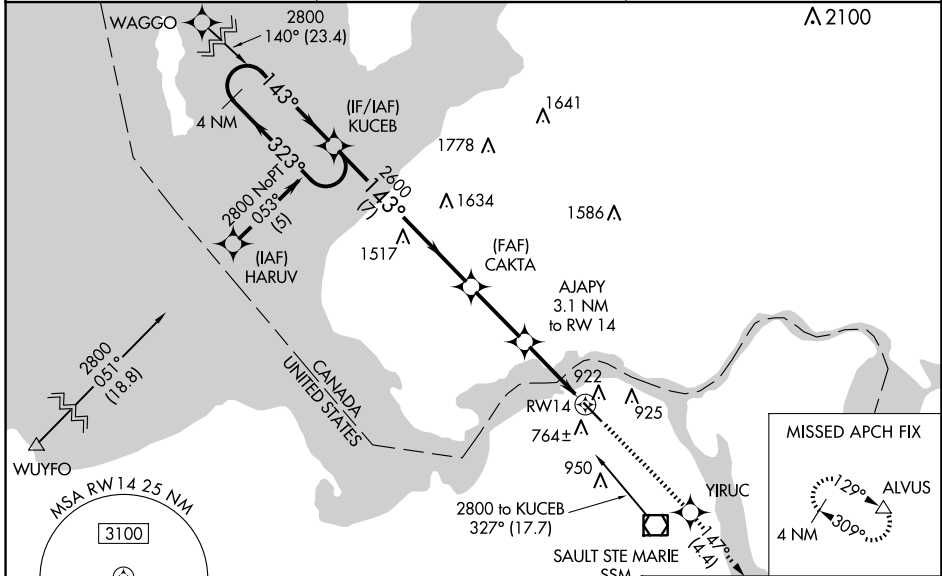
SAULT STE MARIE MUNI/SANDERSON FLD (A.NJ)

RNP APCH.

**▼** For uncompensated Baro-VNAV systems, LNAV/VNAV NA below -16°C or above 54°C.  
**▲** Rwy 14 helicopter visibility reduction below ¾ SM NA. When local altimeter setting not received, use Chippewa County Intl altimeter setting and increase all DA 45 feet and all MDA 60 feet. Increase LNAV/VNAV all Cats visibilities to 1¾ mile and LNAV Cat C visibility to 1¾ mile.

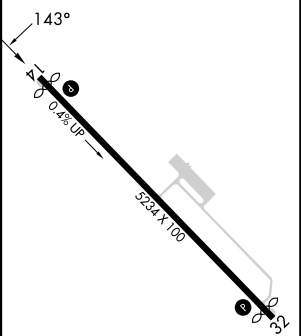
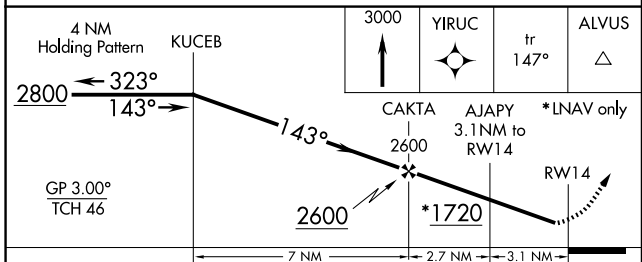
MISSED APPROACH:  
 Climb to 3000 direct  
 YIRUC and on track  
 147° to ALVUS and hold.

ASOS <b>118.375</b>	TORONTO CENTER <b>132.65 344.5</b>	UNICOM <b>122.7 (CTAF) 0</b>
------------------------	---------------------------------------	---------------------------------



Procedure NA for arrivals on  
 SSM VOR/DME airway radials 304 CW 352

ELEV 716	TDZE 712
----------	----------



CATEGORY	A	B	C	D
LPV DA	962-1	250 (300-1)		NA
LNAV/VNAV DA	1137-1¾	425 (500-1¾)		NA
LNAV MDA	1240-1	528 (600-1)	1240-1¾ 528 (600-1¾)	NA

MIRL Rwy 14-32 0  
 REIL Rwy 14 and 32 0

EC-1, 15 MAY 2025 to 12 JUN 2025

EC-1, 15 MAY 2025 to 12 JUN 2025