

RNAV (GPS) RWY 5

BEAVER (WBQ)(PAWB)

APP CRS	Rwy Idg	3934
056°	TDZE	365
	Apt Elev	365

RNP APCH-GPS.

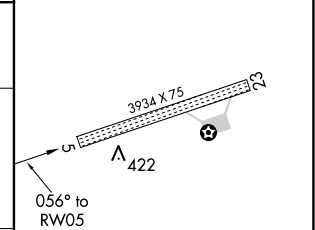
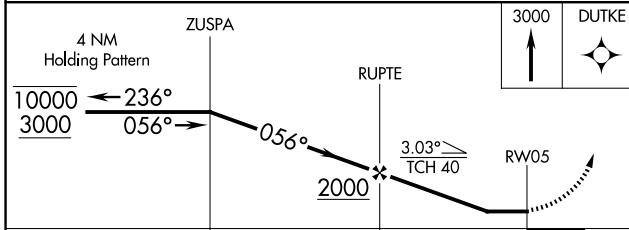
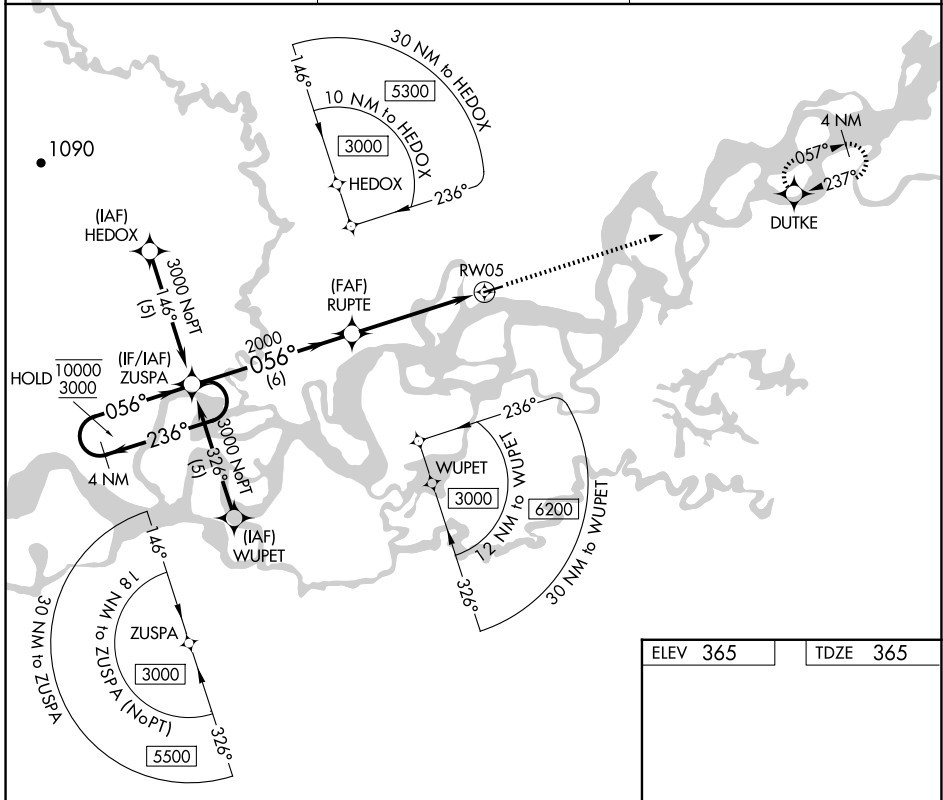
▼ Rwy 5 helicopter visibility reduction below 3/4 SM NA.
▲ NA Use Fort Yukon altimeter setting.

MISSED APPROACH: Climb to 3000 direct DUTKE and hold.

FYU/PFYU AWOS-3P
125.8

FAIRBANKS RADIO
122.05 122.15

CTAF
122.9 0



ELEV 365	TDZE 365
----------	----------

CATEGORY	A	B	C	D
LNVA MDA	940-1	575 (600-1)	940-1 3/8 575 (600-1 3/8)	NA
C CIRCLING	940-1	575 (600-1)	940-1 1/2 575 (600-1 1/2)	NA

MIRL Rwy 5-23 0

AK, 17 APR 2025 to 12 JUN 2025

AK, 17 APR 2025 to 12 JUN 2025