

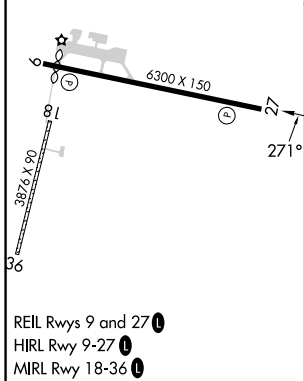
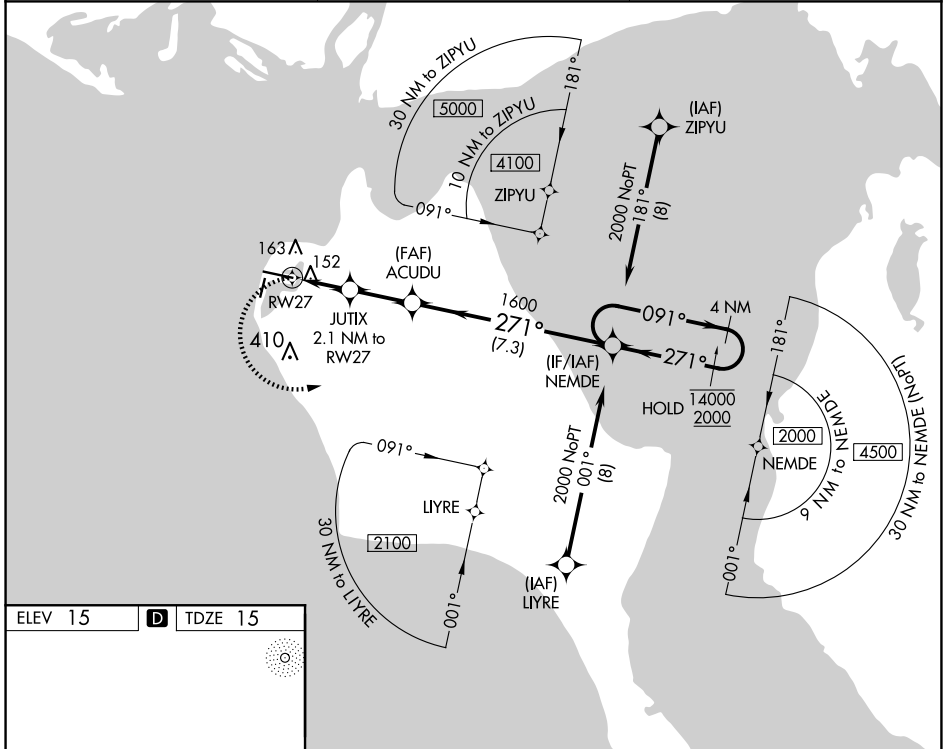
APP CRS	Rwy Idg	<b>5900</b>
<b>271°</b>	TDZE	<b>15</b>
	Apt Elev	<b>15</b>

# RNAV (GPS) RWY 27

RALPH WIEN MEML (OTZ) (PAOT)

RNP APCH.	<p><b>⚠</b> Circling Rwy 18, 36 NA at night. Rwy 27 helicopter visibility reduction below 1 SM NA. Straight-in Rwy 27 NA at night, Circling Rwy 27 at night, operational VGSI required, remain on or above VGSI glidepath until threshold.</p>	<p>MISSED APPROACH: Climbing left turn to 2000 direct NEMDE and hold.</p>
-----------	--	---

AFIS <b>135.45</b>	ANCHORAGE CENTER <b>119.2 263.0</b>	KOTZEBUE RADIO <b>123.6 (CTAF) 0</b>
-----------------------	--	---



2000	NEMDE	NEMDE		4 NM Holding Pattern
<p>JUTIX 2.1 NM to RW27</p> <p>ACUDU</p> <p>RW27</p> <p>3.30° TCH 47</p> <p>800 1600</p> <p>2.1 NM 2.3 NM 7.3 NM</p>		<p>091° → 1400</p> <p>← 271° 2000</p>		
CATEGORY	A	B	C	D
LNAV MDA	420-1	405 (500-1)	420-1½	405 (500-1½)
<b>C</b> CIRCLING	520-1	505 (600-1)	720-2	720-2¼
			705 (800-2)	705 (800-2¼)

AK, 17 APR 2025 to 12 JUN 2025

AK, 17 APR 2025 to 12 JUN 2025