

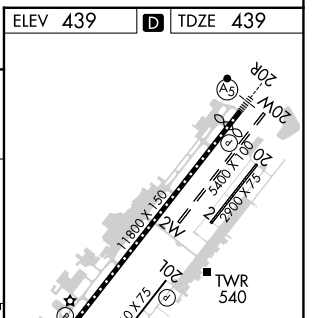
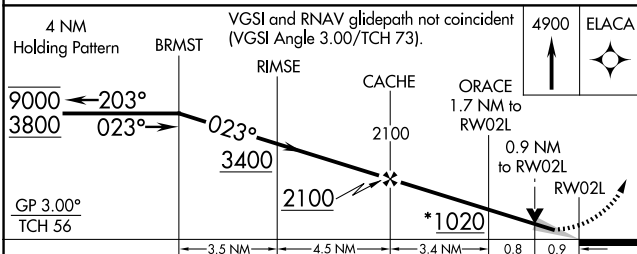
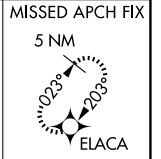
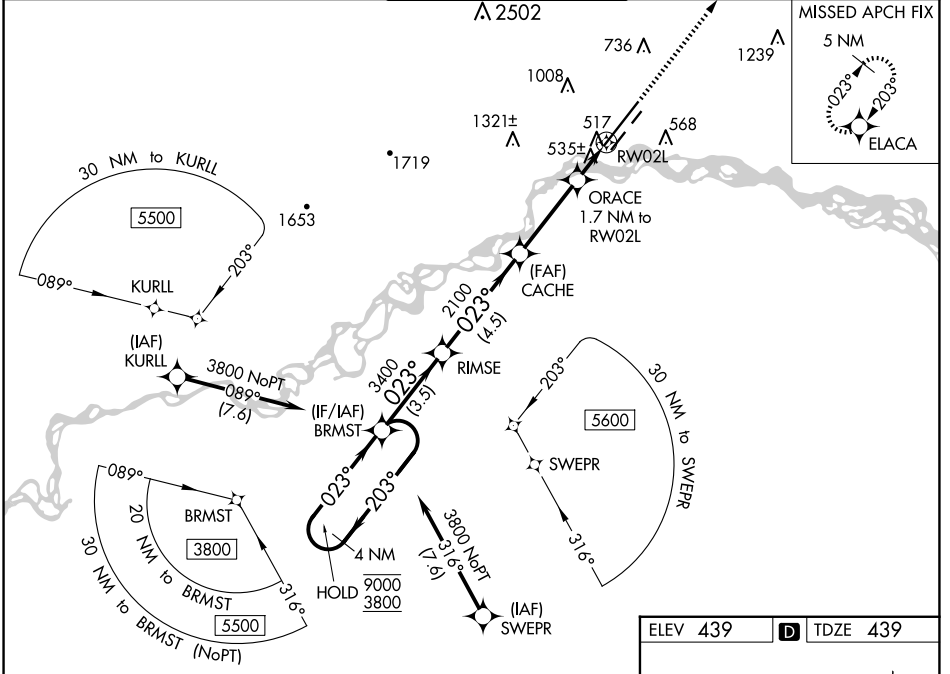
WAAS CH 57915 W02B	APP CRS 023°	Rwy Idg 11050 TDZE 439 Apt Elev 439
--	------------------------	--

RNAV (GPS) Y RWY 2L

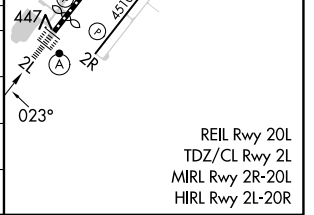
FAIRBANKS INTL (FAI) (PAFA)

RNP APCH - GPS.	ALSF-2	MISSED APPROACH: Climb to 4900 direct ELACA and hold, continue climb-in hold to 4900.
Circling NA west of Rwy 2L-20R. Circling NA to Rwy 2W and 20W. -29°C For uncompensated Baro-VNAV systems, LNAV/VNAV NA below -19°C or above 54°C. For inop ALS, increase LNAV/VNAV all Cats visibility to RVR 4500 and LNAV Cat C/D visibility to RVR 5500.		

ATIS 124.4	FAIRBANKS APP CON 125.35 363.2	FAIRBANKS TOWER 118.3 257.8	GND CON 121.9	CLNC DEL 127.6
----------------------	--	---------------------------------------	-------------------------	--------------------------



CATEGORY	A	B	C	D
LPV DA	639/18		200 (200-½)	
LNAV/VNAV DA	720/24		281 (300-½)	
LNAV MDA	800/24	361 (400-½)	800/40	361 (400-¾)
CIRCLING	880-1	900-1	900-1½	1020-2
	441 (500-1)	461 (500-1)	461 (500-1½)	581 (600-2)



AK, 17 APR 2025 to 12 JUN 2025

AK, 17 APR 2025 to 12 JUN 2025