

VOR/DME ENM 117.8 Chan 125	APP CRS 159°	Rwy Idg 4601 TDZE 16 Apt Elev 16
---	------------------------	---

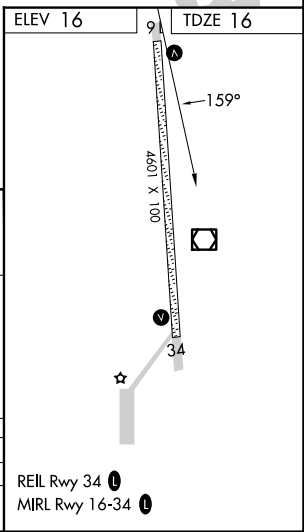
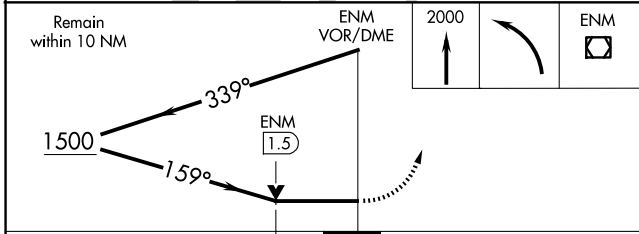
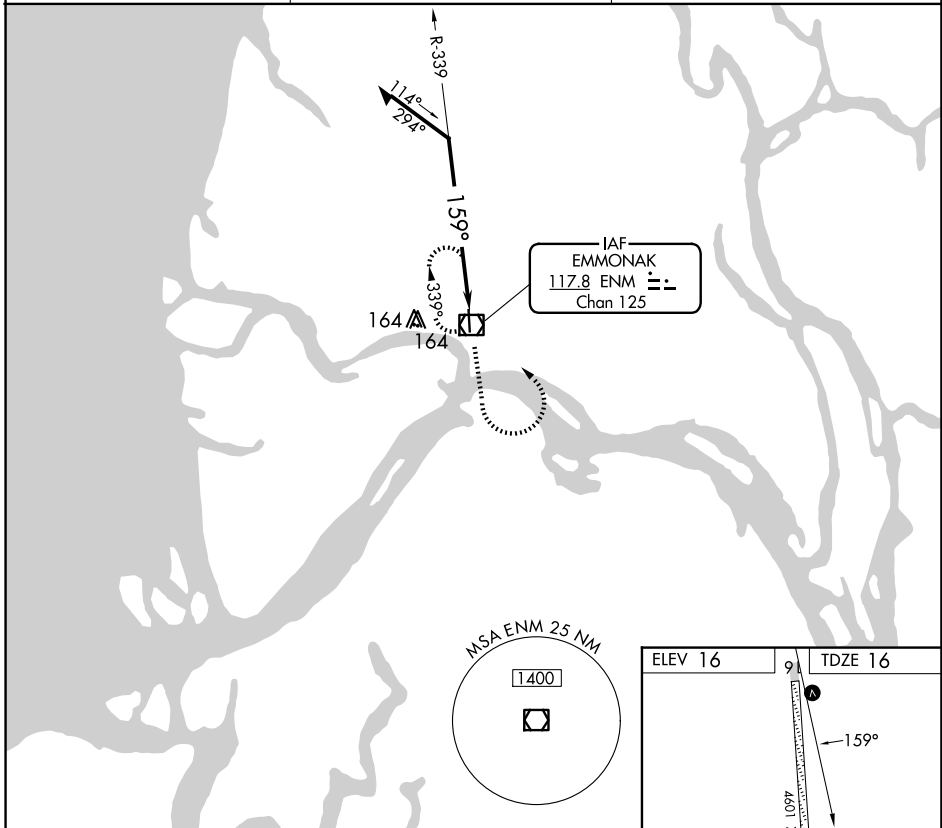
VOR RWY 16

EMMONAK (ENM) (PAEM)

⚠ If local altimeter setting not received, use St. Mary's altimeter setting and increase all MDAs 180 feet.
VDP not authorized with St. Mary's altimeter setting.

MISSED APPROACH: Climb to 2000 then left turn direct ENM VOR/DME and hold.

AWOS-3P 135.35	ANCHORAGE CENTER 124.0	CTAF 122.9
--------------------------	----------------------------------	----------------------



CATEGORY	A	B	C	D
S-16	340-1 324 (400-1)			
CIRCLING	520-1 504 (600-1)	520-1½ 504 (600-1½)	580-2 564 (600-2)	

REIL Rwy 34 **Ⓡ**
MIRL Rwy 16-34 **Ⓡ**

AK, 17 APR 2025 to 12 JUN 2025

AK, 17 APR 2025 to 12 JUN 2025