

WAAS CH <b>86702</b> <b>W16A</b>	APP CRS <b>163°</b>	Rwy ldg TDZE <b>16</b> Apt Elev <b>16</b>
--	------------------------	---

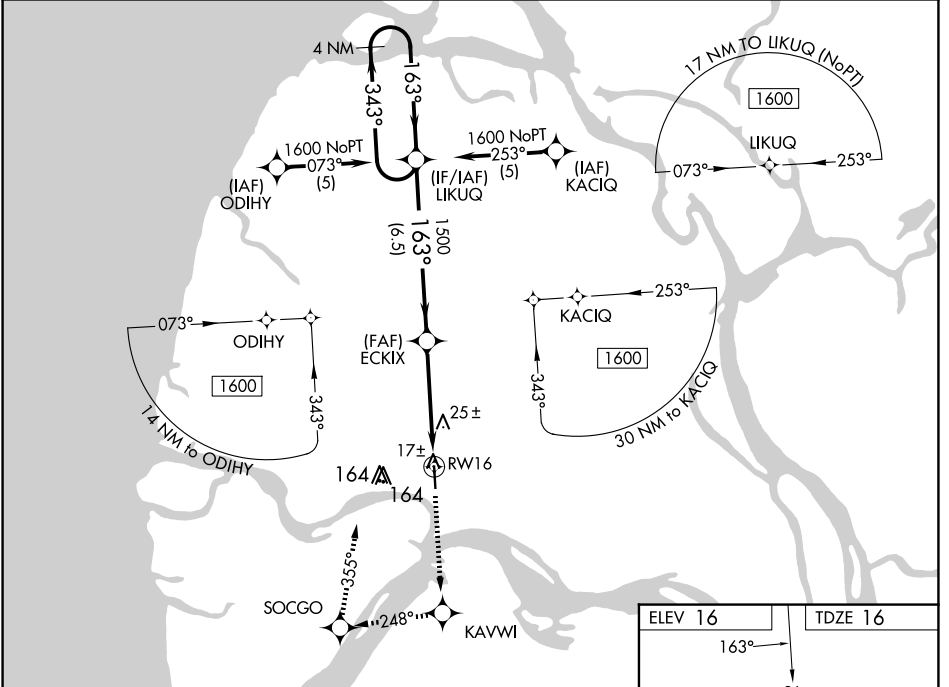
# RNAV (GPS) RWY 16

EMMONAK (ENM) (PAEM)

**⚠** If local altimeter setting not received, use St Mary's altimeter setting and increase all DAs 168 feet and all MDAs 180 feet. VDP NA with St Mary's altimeter setting. DME/DME RNP: 0.3 NA. Baro-VNAV NA when using St Mary's altimeter setting. For uncompensated Baro-VNAV systems, LNAV/VNAV NA below -25°C (-13°F) or above 48°C (119°F).

**MISSED APPROACH:** Climb to 1600 direct KAVWI and right turn via 248° track to SOCGO and right turn via 355° track to LIKUQ and hold.

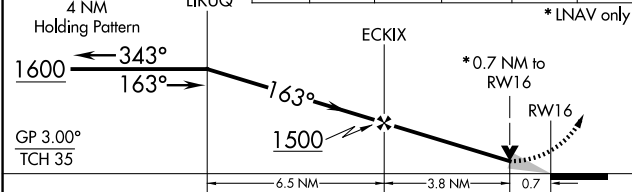
AWOS-3P <b>135.35</b>	ANCHORAGE CENTER <b>124.0</b>	CTAF <b>122.9</b>
--------------------------	----------------------------------	----------------------



VGSI and RNAV glidepath not coincident (VGSI Angle 3.00/TCH 32).

1600	KAVWI	SOCGO	LIKUQ
↑	◆	↪ tr 248°	↪ tr 355°

\* LNAV only



CATEGORY	A	B	C	D
LPV DA		266-1	250 (300-1)	
LNAV/VNAV DA		280-1	264 (300-1)	
LNAV MDA		280-1	264 (300-1)	
CIRCLING	520-1	504 (600-1)	520-1½ 504 (600-1½)	580-2 564 (600-2)

