

DELTA JUNCTION/FORT GREELY, ALASKA

ILS or LOC/DME RWY 10

LOC/DME I-BIG 111.1 Chan 48	APCH CRS 102°	Rwy ldg TDZE Arpt Elev 6115 1253 1285
---	-------------------------	---

[USA]

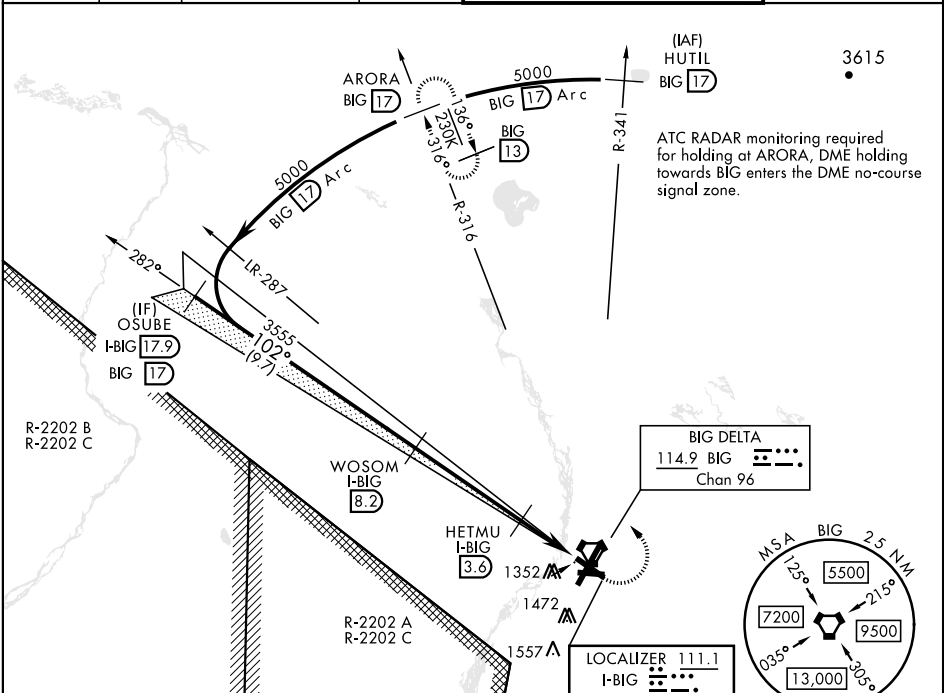
ALLEN AAF (PABI)

DME required

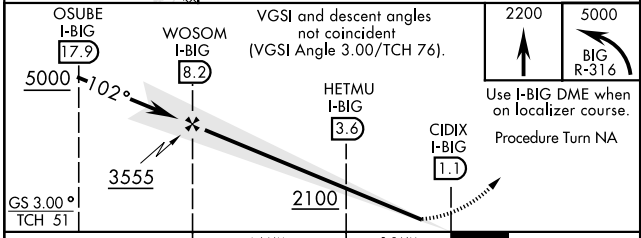
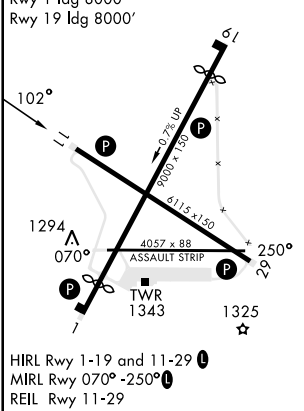
▽
▲ * Circling not authorized East of Rwy 1-19.

MISSED APPROACH: Climb to 2200 then climbing left turn to 5000 via BIG R-316 to ARORA/BIG 17 DME and hold.

ATIS 132.075	ASOS 135.65	ANCHORAGE CENTER 135.3 322.5	CTAF 122.90	TOWER ★ 119.8 235.775 40.8 (E) FM	GND CON 118.225 251.05
------------------------	-----------------------	--	-----------------------	---	----------------------------------



ELEV 1285	TDZE 1253
-----------	-----------



CATEGORY	A	B	C	D
S-ILS 11	1453-¾ 200 (200-¾)			
S-LOC 11	1620-1 367 (400-1)			
C CIRCLING*	1740-1 455 (500-1)	1780-1 495 (500-1)	1860-1½ 575 (600-1½)	2040-2½ 755 (800-2½)

DELTA JUNCTION/FORT GREELY, ALASKA
Amdt 1 10AUG23

64°00'N-145°43'W

ALLEN AAF (PABI)

ILS or LOC/DME RWY 10

AK, 17 APR 2025 to 12 JUN 2025

AK, 17 APR 2025 to 12 JUN 2025