

RNAV (GPS) RWY 35

ANVIK (ANV)(PANV)

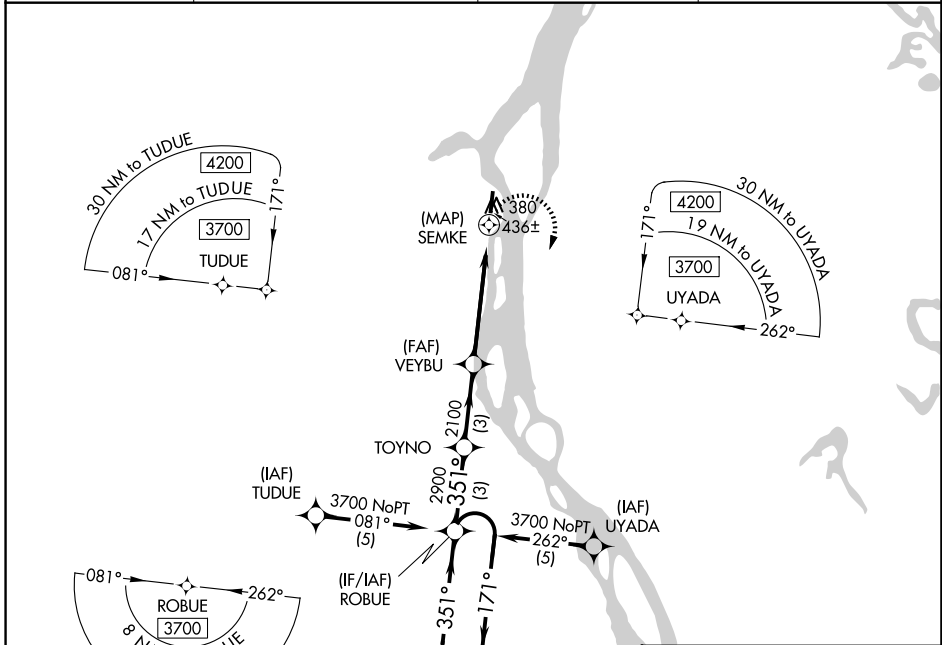
APP CRS 351°	Rwy Idg 4000
	TDZE 297
	Apt Elev 297

RNP APCH - GPS.

⚠

MISSED APPROACH: Climbing right turn to 3700 direct ROBUE and hold, continue climb-in-hold to 3700.

AWOS-3P 133.55	ANCHORAGE CENTER 135.7 335.5	KENAI RADIO 122.4	UNICOM 122.7 (CTAF) 0
--------------------------	----------------------------------------	-----------------------------	---------------------------------

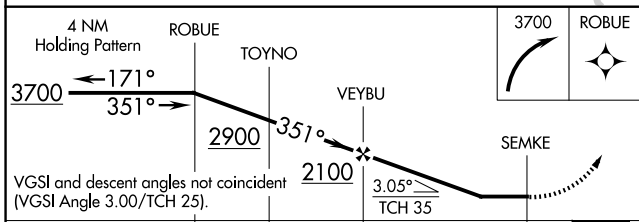
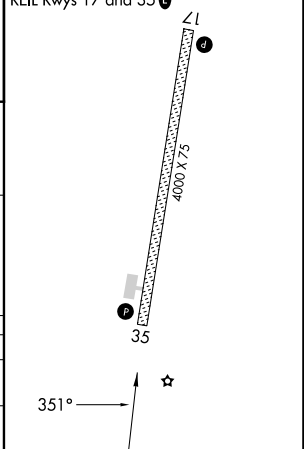


AK, 17 APR 2025 to 12 JUN 2025

AK, 17 APR 2025 to 12 JUN 2025

ELEV 297	TDZE 297
----------	----------

MRL Rwy 17-35 **0**
REL Rwy 17 and 35 **0**



CATEGORY	A	B	C	D
RNAV MDA	780-1 483 (500-1)		780-1 $\frac{3}{8}$ 483 (500-1 $\frac{3}{8}$)	
CIRCLING	840-1 543 (600-1)		840-1 $\frac{1}{2}$ 543 (600-1 $\frac{1}{2}$)	860-2 563 (600-2)